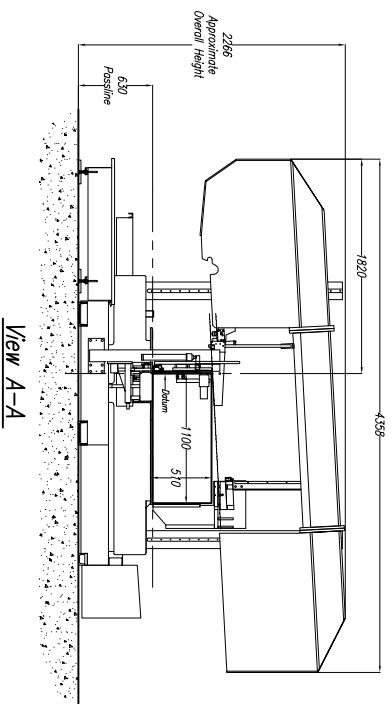


4483
2273
2108
1229
1191
To Edge of Infeed Conveyor
To Outside Edge of Miter Conveyor
To Inside Edge of Miter Conveyor
To Outer Edge of Saw

CUSTOMER NOTE!!!!
 This Saw Is Manufactured
 At A 630mm Passline And
 Requires A CUSTOMER SUPPLIED
 Pit Or Platform To Achieve Any
 Other Passline Requested.

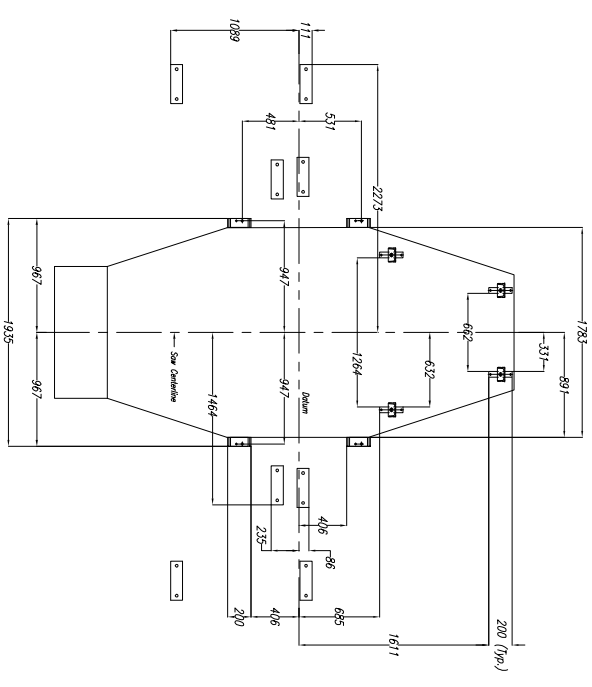
Approximate Machine Weight
 1100-510 DG - 5,590 kg



View A-A

SAW COOLANT RECOMMENDATION: VEGETABLE BASE COOLANT
 USE PEDDINGHAUS TEBIDI-COOL
 THIS PRODUCT IS FOR MIST COOLANT SYSTEMS
 DO NOT MIX THIS COOLANT WITH WATER

**!!!NOTE DO NOT DRILL HOLES FOR ANCHOR PLATES UNTIL
 MACHINE IS IN PLACE AND LEVEL AT FINAL INSTALLATION!!!**



Saw Base

1100-510 Saw NOTES:

- 1.) Passline of Equipment Based on 630mm from Floorline
- 2.) Concrete Under Equipment/Beams & Pits to be a Minimum of 200mm Thick
- 3.) Primary 400 V., 3 Ph., 50 Hz. [Req'd @ each]
- 4.) Total kW for Equipment = 17.6 kW (27 Amps)
- 5.) Air Requirement: 6,205 bar, 0.057 SCMM Min. Free Air [Req'd @ each]
- 6.) Hydraulic Oil (Mobil DTE #24 Or Equal) [Req'd @ Each] [13 L Total]
- 7.) Anchor Bolts (Control Stand) 12mm Anchor Bolt Or Equal [7 Req'd]
- 8.) Anchor Bolts (Mitered Conveyors) 16mm Anchor Bolt Or Equal [16 Req'd]
- 9.) Anchor Bolts (Machine) 20mm Anchor Bolt Or Equal [8 Req'd]

E									
D									
C									
B									
A									
LET	REVISION/CS.#	BY	DATE	Peddinghaus Corp. BRADLEY, ILL. U.S.A. 1100-510 DG Miter Band Saw For					
				IMPORTANT Safety Note Because of the difficulty to effectively guard the full length of the system it is the customers responsibility to provide safe guarding personnel and to provide safe guarding.					
				DRAWN BY: J. Marden SCALE: 1 : 30 DATE:					
				THIS PRINT IS THE PROPERTY OF PEDDINGHAUS CORP. AND IS NOT TO BE USED IN ANY MANNER DETRIMENTAL TO THE INTERESTS OF SAID COMPANY.					