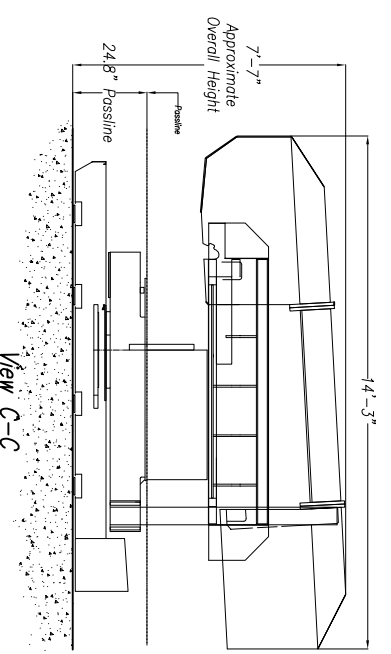
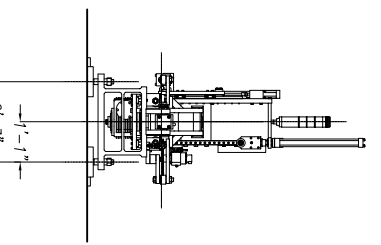
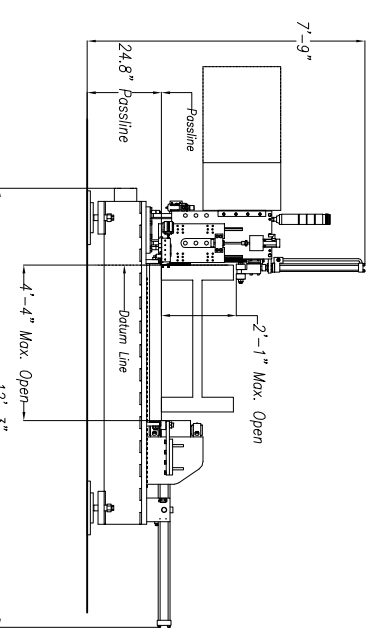


**CUSTOMER NOTE!!!!**  
 This Saw Is Manufactured At A 24.8" Passline And Require A CUSTOMER SUPPLIED Pit Or Platform To Achieve Any Other Passline Requested.



**Approximate Machine Weight**  
 Accumessure - 6,500 lbs  
 1100 DG - 12,324 lbs



**SAW COOLANT RECOMMENDATION:**  
 USE PEDDINGHAUS "PEDDI COOL" VEGETABLE BASE COOLANT  
 THIS PRODUCT IS FOR MIST COOLANT SYSTEMS  
 DO NOT MIX THIS COOLANT WITH WATER

- 1) Passline of Band Saw based on " from Floor-Line
- 2) Concrete Under Equipment/Beams & Pits to be a Minimum of 6" Thick
- 3) Primary 460V., 3Ph., 60Hz. [Req'd @ each ]
- 4) Total K.V.A. for Equipment = 32 K.V.A. { 40 Amps }
- 5) Air Requirement: 90 PSIG, 42 SCFM Min. Free Air [Req'd @ each ]
- 6) Hydraulic Oil (Mobil DTE #24 Or Equal) [Req'd @ Each ] { 60 Gal. Total }
- 7) Anchor Bolts For Accumessure/Band Saw: 1/2" Phillips Red Head #S-12 Or Equal [48 Req'd]
- 8) Analog Phone line for Remote Diagnostic And Support. [Req'd @ Each ]

**Accumessure Notes**

- 1.) Passline of Equipment Based on " from Floorline
- 2.) Concrete Under Equipment/Beams & Pits to be a Minimum of 6" Thick
- 3.) Primary 460V., 3Ph., 60Hz. [Req'd @ each ]
- 4.) Total K.V.A. for Equipment = 32 K.V.A. { 40 Amps }
- 5.) Air Requirement: 90 PSIG, 42 SCFM Min. Free Air [Req'd @ each ]
- 6.) Hydraulic Oil (Mobil DTE #24 Or Equal) [Req'd @ Each ] { 60 Gal. Total }
- 7.) Anchor Bolts For Accumessure/Band Saw: 1/2" Phillips Red Head #S-12 Or Equal [48 Req'd]
- 8.) Analog Phone line for Remote Diagnostic And Support. [Req'd @ Each ]

**Meba Band Saw 1100 DG**

E									
D									
C									
B									
A									
LET.									

REVISION/C.N.#	BY	DATE	

Peddinghaus Corp.		Peddinghaus Corp.	
BRADLEY, ILL. U.S.A.		BRADLEY, ILL. U.S.A.	
1100 DG & Accumessure		1100 DG & Accumessure	
for		for	
DRAWN BY:	SCALE: 1 : 30	DATE:	
<i>S. Martin</i>			
DRWG. NO.			

IMPORTANT Safety Note!  
 Because of the difficulty to effectively guard the full length of the system it is the customer's responsibility to provide safe crossing personnel and to provide safe crossing.

THIS PRINT IS THE PROPERTY OF PEDDINGHAUS CORP. AND IS NOT TO BE USED IN ANY MANNER DETRIMENTAL TO THE INTERESTS OF SAID COMPANY