

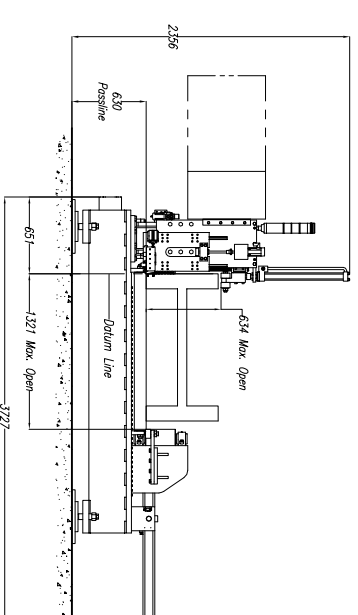
**CUSTOMER NOTE!!!!**  
 This Saw Is Manufactured  
 At A 630mm Passline And  
 Requires A CUSTOMER SUPPLIED  
 Pit Or Platform To Achieve Any  
 Other Passline Requested.

**SAW COOLANT RECOMMENDATION:**  
 USE PEDDINGHAUS "PEDDI COOL" VEGETABLE BASE COOLANT  
 THIS PRODUCT IS FOR MIST COOLANT SYSTEMS  
 DO NOT MIX THIS COOLANT WITH WATER

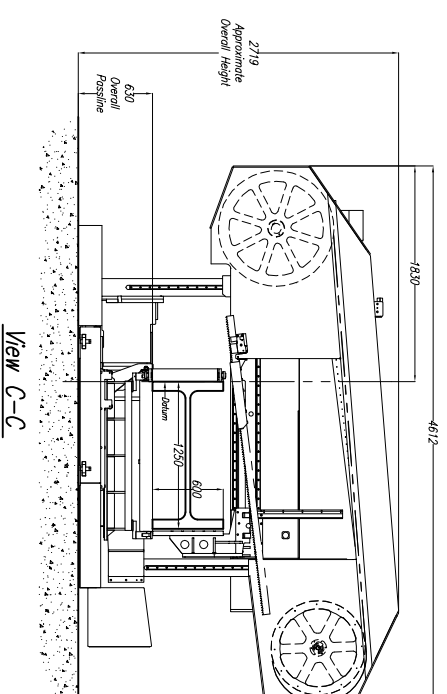
**DRILL COOLANT RECOMMENDATION:**  
 SEE MANUAL FOR DRILL COOLANT RECOMMENDATIONS

**Approximate Machine Weight**

1250 Accummeasure – 2,950 kg  
 1250-600 DG – 6,650 kg



View A-A

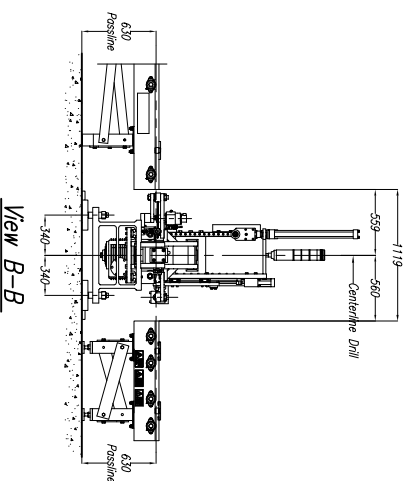


View C-C

- 1.) Passline of Equipment Based on 630mm from Floorline
- 2.) Concrete Under Equipment/Beams & Pits to be a Minimum of 200mm Thick
- 3.) Primary 380 V., 3 Ph., 50 Hz. [Req'd @ each ]
- 4.) Total kW for Equipment = 18 kW (40 Amps)
- 5.) Air Requirements: 6-8 bar, 50 L/min, Min. Free Air [Req'd @ each ] {13 L Total}
- 6.) Hydraulic Oil (Mobil DTE #24 Or Equal) [Req'd @ Each ] {13 L Total}
- 7.) Anchor Bolts (Control Stand) 12mm Anchor Bolts Or Equal [4 Req'd]
- 8.) Anchor Bolts (Machine & Safety Stands) 20mm Anchor Bolt Or Equal [16 Req'd]

**1250 Accummeasure Notes**

- 1.) Passline of Equipment Based on 630mm from Floorline
- 2.) Concrete Under Equipment/Beams & Pits to be a Minimum of 200mm Thick
- 3.) Primary 380 V., 3 Ph., 50 Hz. [Req'd @ each ]
- 4.) Total kW for Equipment = 29 kW (48 Amps)
- 5.) Air Requirement: 6.2 bar, 1.19 SCMM Min. Free Air [Req'd @ each ]
- 6.) Hydraulic Oil (Mobil DTE #24 Or Equal) [Req'd @ Each ] {227 L Total}
- 7.) Anchor Bolts (Controls Stand) 12mm Anchor Bolts Or Equal [4 Req'd]
- 8.) Anchor Bolts (Machine & Safety Stand) 20mm Anchor Bolts Or Equal [24 Req'd]
- 9.) Network/Internet Connection for Data Transfer and Remote Diagnostics [Req'd @ Each ]



View B-B

E									
D									
C									
B									
A									
LET.	REVISION/C.N.#	BY	DATE	THIS PRINT IS THE PROPERTY OF PEDDINGHAUS CORP. AND IS NOT TO BE USED IN ANY MANNER DETRIMENTAL TO THE INTERESTS OF SAID COMPANY.					
				<b>Peddinghaus Corp.</b> BRADLEY, ILL. U.S.A. 1250-600 Miter Band Saw & Accummeasure For					
				IMPORTANT Safety Note! Because of the difficulty to effectively guard the full length of the system it is the customer's personnel and to provide safe crossing. DRAWN BY: <i>S. Martin</i> SCALE: 1 : 30 DATE: DRWG. NO.					