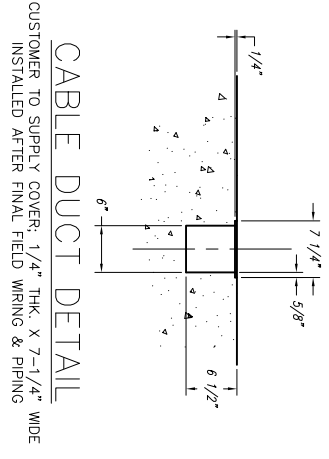
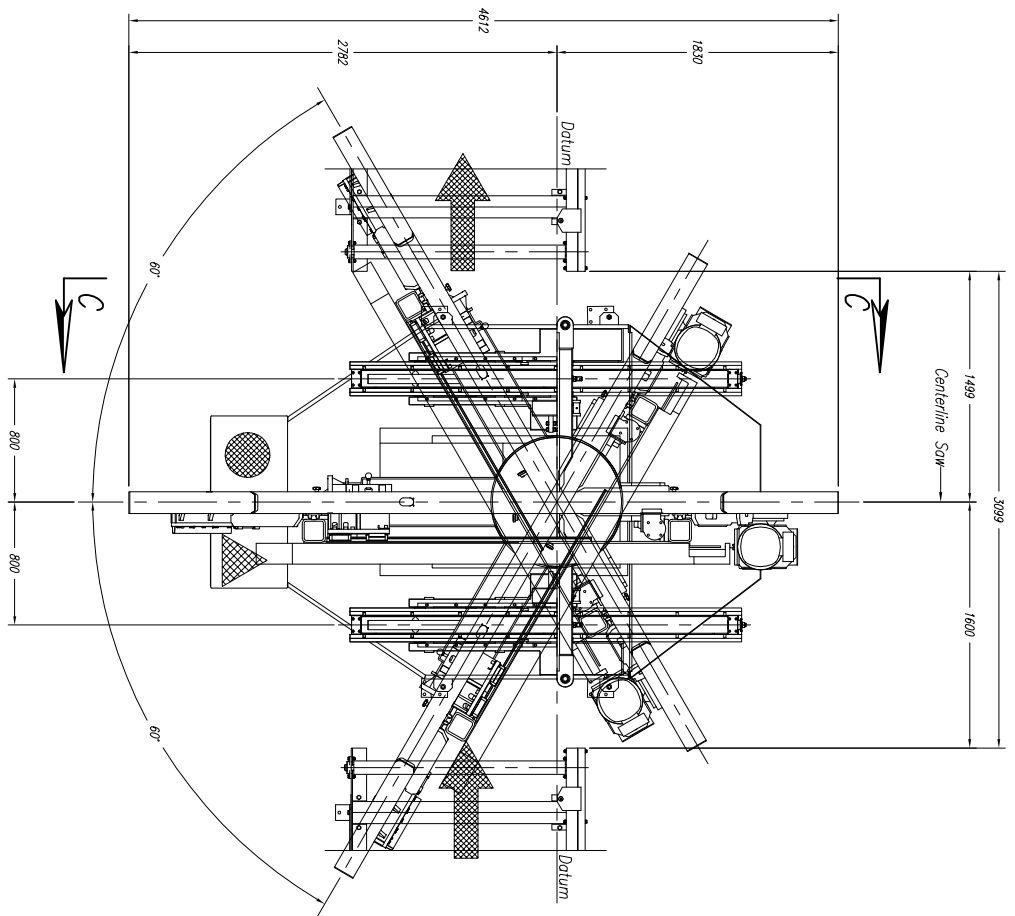
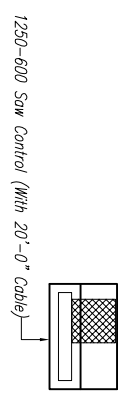


**!!NOTE DO NOT DRILL HOLES FOR ANCHOR PLATES UNTIL MACHINE IS IN PLACE AND LEVEL AT FINAL INSTALLATION!!!**

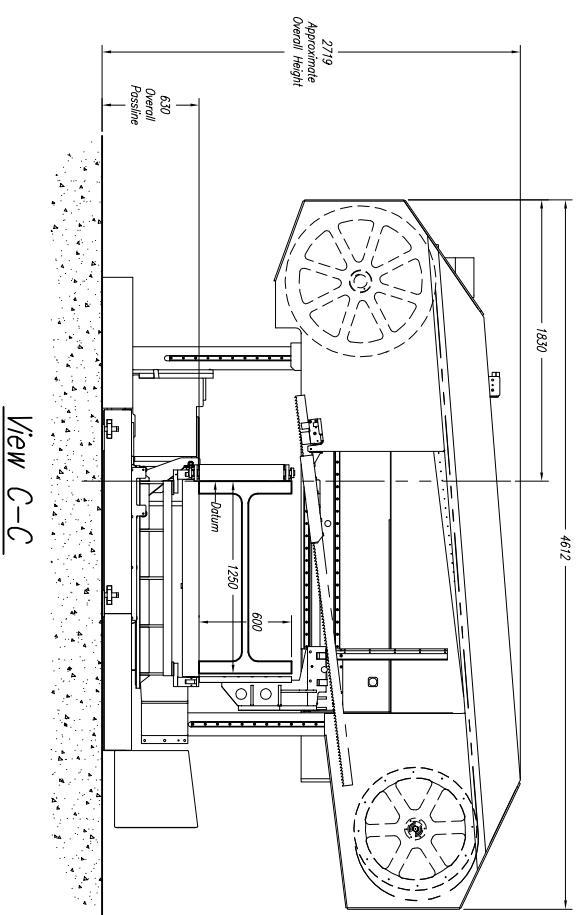
**CUSTOMER NOTE!!!!**  
 This Saw Is Manufactured At A 630mm Passline And Requires A CUSTOMER SUPPLIED Pit Or Platform To Achieve Any Other Passline Requested.



**Approximate Machine Weight**  
 1250-600 DG - 6,650 kg

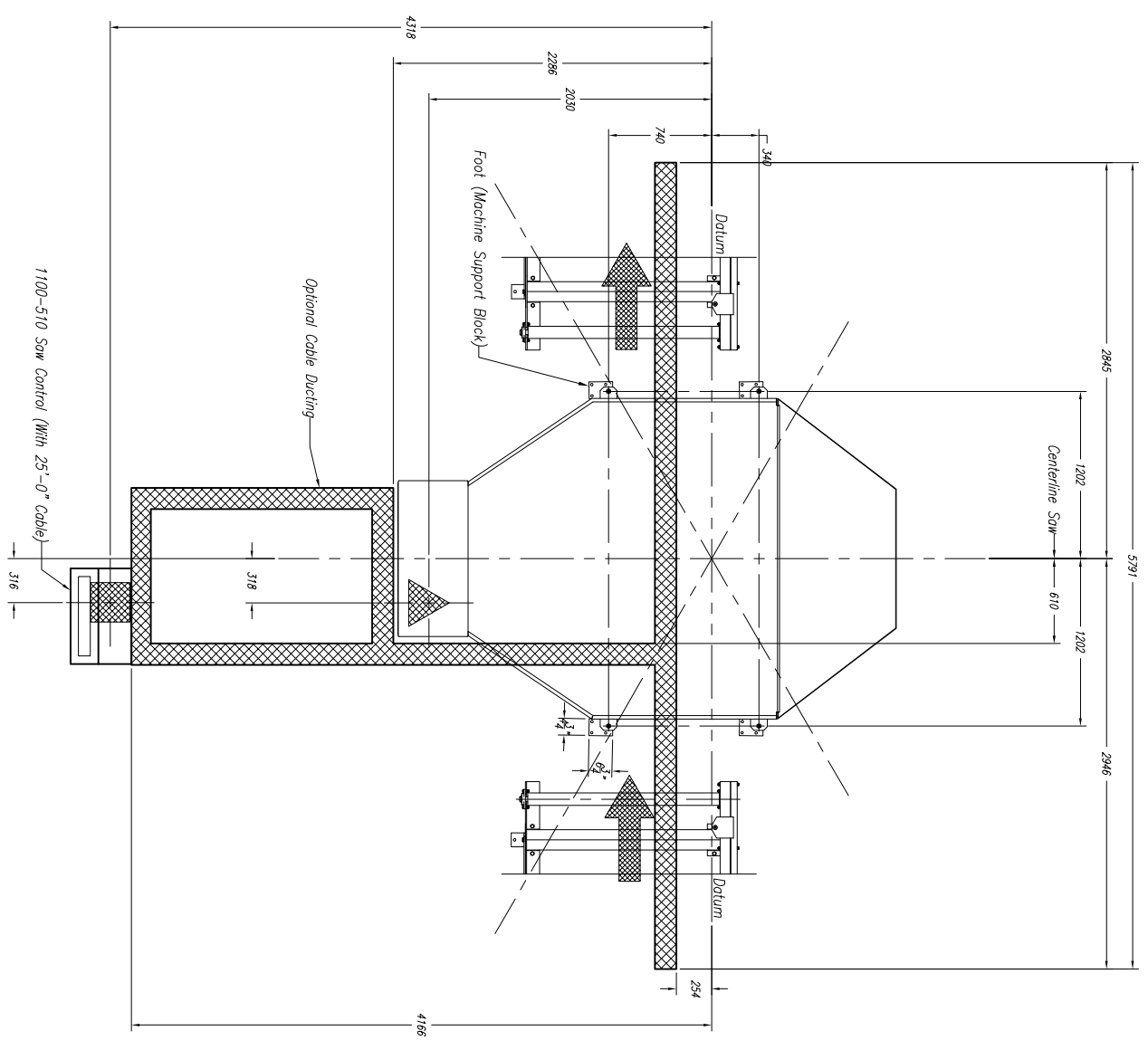


1250-600 Saw Control (With 20'-0" Cable)



View C-C

**SAW COOLANT RECOMMENDATION:**  
 USE PEDDINGHAUS "PEDDI COOL" VEGETABLE BASE COOLANT  
 THIS PRODUCT IS FOR MIST COOLANT SYSTEMS  
 DO NOT MIX THIS COOLANT WITH WATER



**1250-600 Saw Notes:**

- 1.) Passline of Equipment Based on 630mm from Floorline
- 2.) Concrete Under Equipment/Beams & Pits to be a Minimum of 200mm Thick
- 3.) Primary 400 V., 3 Ph., 50 Hz. [Req'd @ each ]
- 4.) Total kW for Equipment = 18 kW (35 Amps)
- 5.) Air Requirements: 6-8 bar, 50 L/min, Min. Free Air [Req'd @ each ]
- 6.) Hydraulic Oil (Mobil DTE #24 Or Equal) [Req'd @ Each ] {13 L Total}
- 7.) Anchor Bolts (Control Stand) 12mm Anchor Bolts Or Equal [4 Req'd]
- 8.) Anchor Bolts (Machine & Safety Stands) 20mm Anchor Bolt Or Equal [16 Req'd]

**Note: Customer To Determine Cable Ducting Arrangement For Main Power & Air Supplies**

E							
D							
C							
B							
A							
LET.							

**Peddinghaus Corp.**  
 BRADLEY, ILL. U.S.A.  
 1250-600 Miter Band Saw  
 for

IMPORTANT Safety Note!  
 Because of the difficulty to effectively guard the full length of the system it is the customers responsibility to prevent access by unauthorized personnel and to provide safe crossing.  
 DRAWN BY: SCALE: 1/2" = 1'  
 DRWG. NO. DATE:

THIS PRINT IS THE PROPERTY OF PEDDINGHAUS CORP. AND IS NOT TO BE USED IN ANY MANNER DISIMMENTAL TO THE INTERESTS OF SAID COMPANY