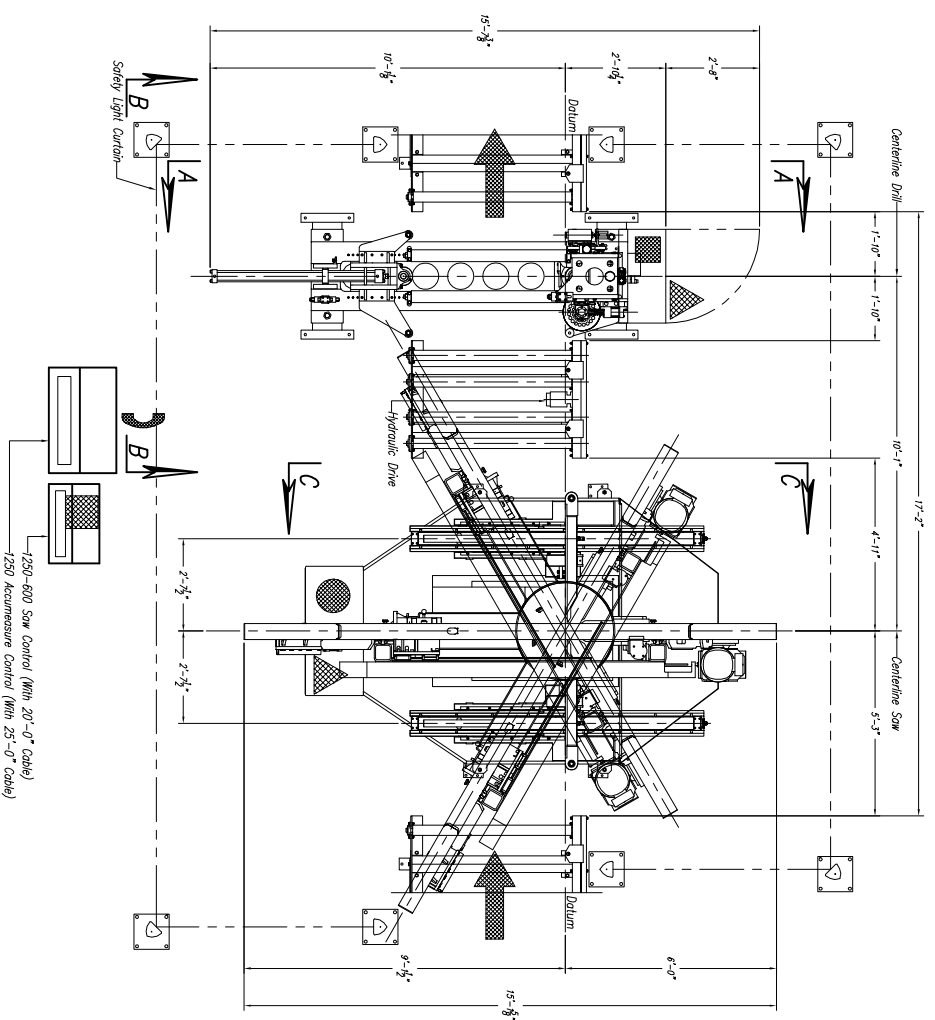
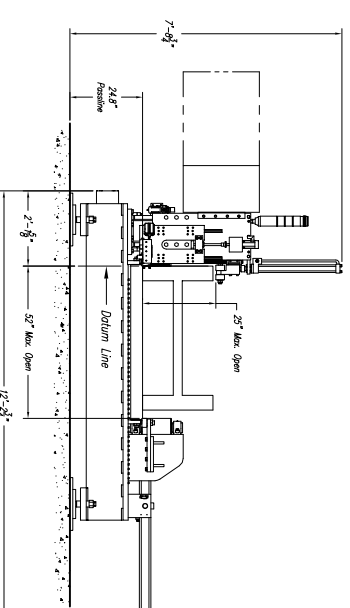


CUSTOMER NOTE!!!!
 This Saw Is Manufactured
 At A 24.8" Passline And
 Requires A CUSTOMER SUPPLIED
 Pit Or Platform To Achieve Any
 Other Passline Requested.

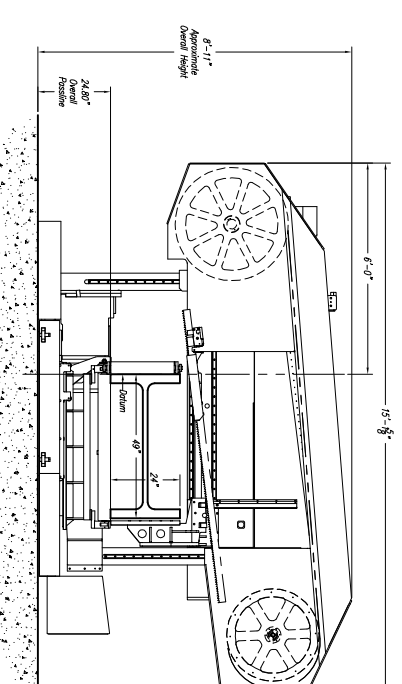


SAW COOLANT RECOMMENDATION:
 USE PEDDINGHAUS FEED/ COOL VEGETABLE BASE COOLANT
 THIS PRODUCT IS FOR MIST COOLANT SYSTEMS
 DO NOT MIX THIS COOLANT WITH WATER
DRILL COOLANT RECOMMENDATION:
 SEE MANUAL FOR DRILL COOLANT RECOMMENDATIONS

Approximate Machine Weight
 1250 Accumeasure – 6,500 lbs
 1250-600 DG – 14,660 lbs



View A-A



View C-C

- 1250-600 Saw Notes:**
- 1.) Passline of Equipment Based on 24.8" from Floorline
 - 2.) Concrete Under Equipment/Beams & Pits to be a Minimum of 6" Thick
 - 3.) Primary 460 V., 3 Ph., 60 Hz. [Req'd @ each]
 - 4.) Total K.V.A. for Equipment = 22 K.V.A. (28 Amps)
 - 5.) Air Requirements: 90-100 PSIG, 2 SCFM. Min. Free Air [Req'd @ each]
 - 6.) Hydraulic Oil (Mobil DTE #24 Or Equal) [Req'd @ Each] {3.5 Gal. Total}
 - 7.) Anchor Bolts (Control Stand) 1/2" ITW Red Head WS-1270 Or Equal [4 Req'd]
 - 8.) Anchor Bolts (Machine & Safety Stands) 3/4" ITW Red Head WS-3470 Or Equal [16 Req'd]

1250 Accumeasure Notes

- 1.) Passline of Equipment Based on 24.8" from Floorline
- 2.) Concrete Under Equipment/Beams & Pits to be a Minimum of 6" Thick
- 3.) Primary 460 V., 3 Ph., 60 Hz. [Req'd @ each]
- 4.) Total K.V.A. for Equipment = 32 K.V.A. (40 Amps)
- 5.) Air Requirement: 90 PSIG, 42 SCFM Min. Free Air [Req'd @ each]
- 6.) Hydraulic Oil (Mobil DTE #24 Or Equal) [Req'd @ Each] {60 Gal. Total}
- 7.) Anchor Bolts (Control Stand) 1/2" ITW Red Head WS-1270 Or Equal [4 Req'd]
- 8.) Anchor Bolts (Machine & Safety Stand) 3/4" ITW Red Head WS-3470 Or Equal [24 Req'd]
- 9.) Network/Internet Connection for Data Transfer and Remote Diagnostics [Req'd @ Each]

Peddinghaus Corp.

BRADLEY, ILL. U.S.A.

1250-600 Miter Bond Saw
 & 1250 Accumeasure For

REV.	REVISION/C.N.#	BY	DATE	THIS PRINT IS THE PROPERTY OF PEDDINGHAUS CORP. AND IS NOT TO BE USED IN ANY MANNER DETRIMENTAL TO THE INTERESTS OF SAID COMPANY.
E				IMPORTANT Safety Note Because of the difficulty to find and guard the responsibility to prevent access by unauthorized personnel and to provide safe crossing. DRAWN BY: <i>G. Mankin</i> SCALE: 1/2" = 1" DATE: DRWG. NO.
D				
C				
B				
A				