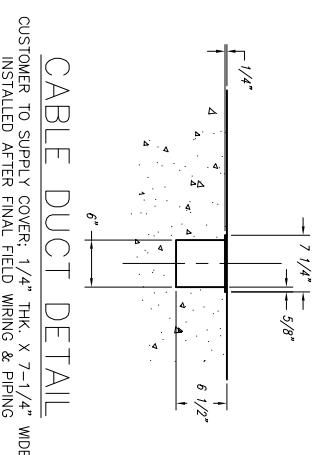
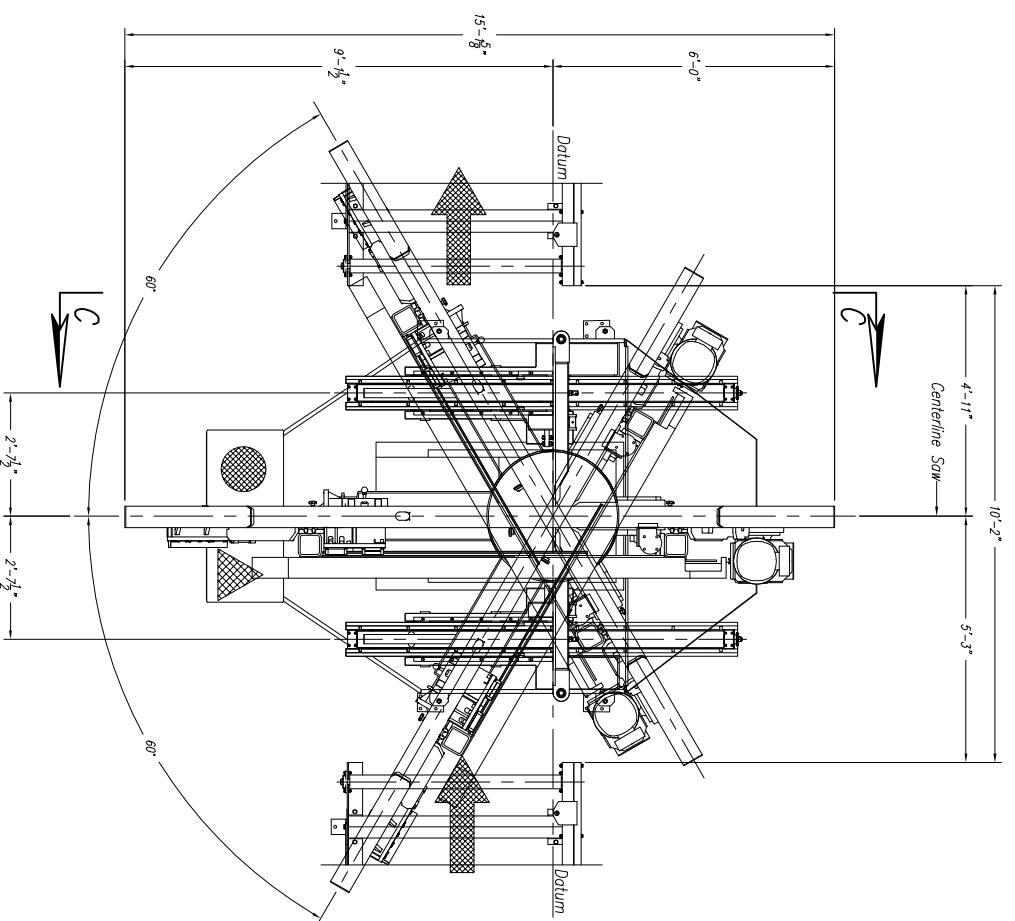


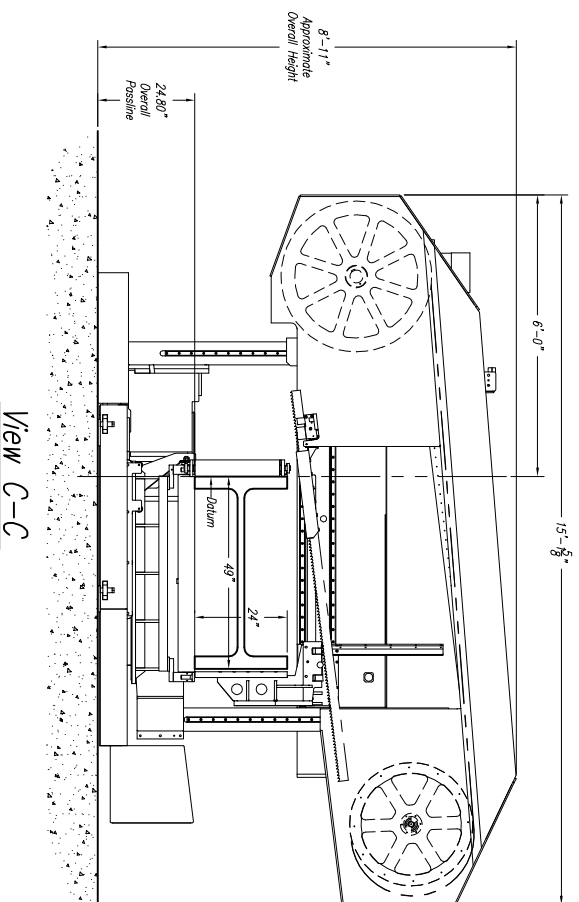
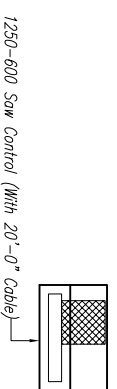
!!NOTE DO NOT DRILL HOLES FOR ANCHOR PLATES UNTIL MACHINE IS IN PLACE AND LEVEL AT FINAL INSTALLATION!!!

CUSTOMER NOTE!!!!

This Saw Is Manufactured At A 24.8" Passline And Requires A CUSTOMER SUPPLIED Pit Or Platform To Achieve Any Other Passline Requested.

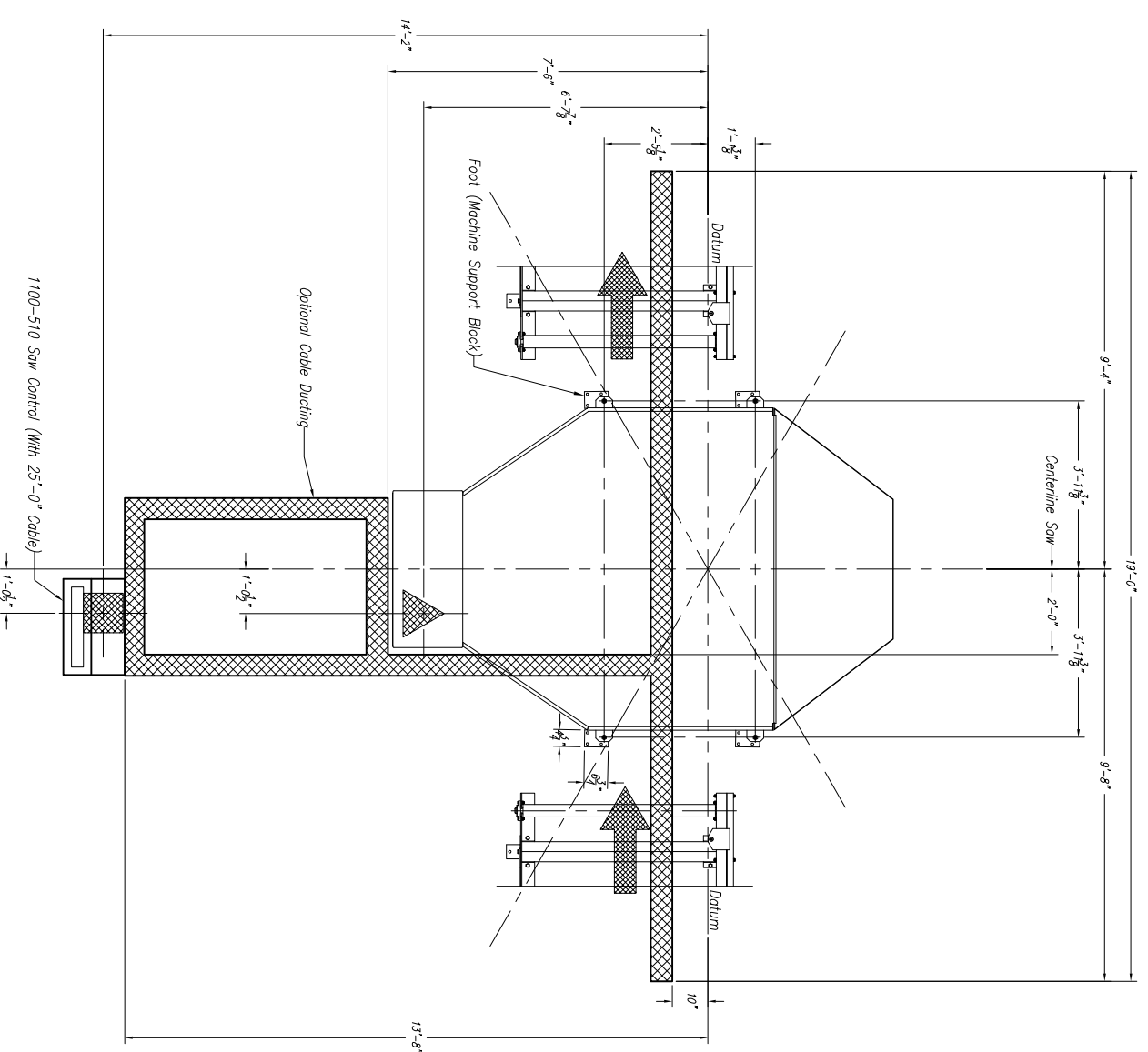


Approximate Machine Weight
1250-600 DG - 14,660 lbs



SAW COOLANT RECOMMENDATION:
USE PEDDINGHAUS "PEDDI COOL" VEGETABLE BASE COOLANT
THIS PRODUCT IS FOR MIST COOLANT SYSTEMS
DO NOT MIX THIS COOLANT WITH WATER

View C-C



Note: Customer To Determine Cable Ducting Arrangement For Main Power & Air Supplies

1250-600 Saw Notes:

- 1.) Passline of Equipment Based on 24.8" from Floorline
- 2.) Concrete Under Equipment/Beams & Pits to be a Minimum of 6" Thick
- 3.) Primary 460 V., 3 Ph., 60 Hz. [Req'd @ each]
- 4.) Total K.V.A. for Equipment = 22 K.V.A. (28 Amps)
- 5.) Air Requirements: 90-100 PSIG, 2 SCFM, Min. Free Air [Req'd @ each]
- 6.) Hydraulic Oil (Mobil DTE #24 Or Equal) [Req'd @ Each] [3.5 Gal. Total]
- 7.) Anchor Bolts (Control Stand) 1/2" [TW Red Head WS-1270 Or Equal [4 Req'd]
- 8.) Anchor Bolts (Machine & Safety Stands) 3/4" [TW Red Head WS-3470 Or Equal [16 Req'd]

| | | | | | | | | | |
|------|--|--|--|--|--|--|--|--|--|
| E | | | | | | | | | |
| D | | | | | | | | | |
| C | | | | | | | | | |
| B | | | | | | | | | |
| A | | | | | | | | | |
| LET. | | | | | | | | | |

Peddinghaus Corp.
BRADLEY, ILL. U.S.A.

1250-600 Miter Band Saw
& 1250 Accummeasure For

IMPORTANT Safety Note:
Because of the difficulty to effectively guard the full length of the system it is the customers responsibility to prevent access by unauthorized personnel and to provide safe crossing.

DRAWN BY: *J. Markin* SCALE: 1/2" = 1' DATE:
DRWG. NO.

THIS PRINT IS THE PROPERTY OF PEDDINGHAUS CORP. AND IS NOT TO BE USED IN ANY MANNER DETRIMENTAL TO THE INTERESTS OF SAID COMPANY