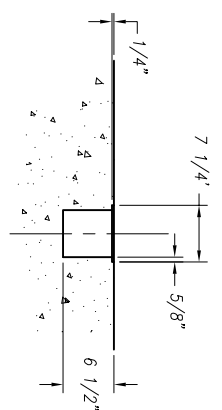
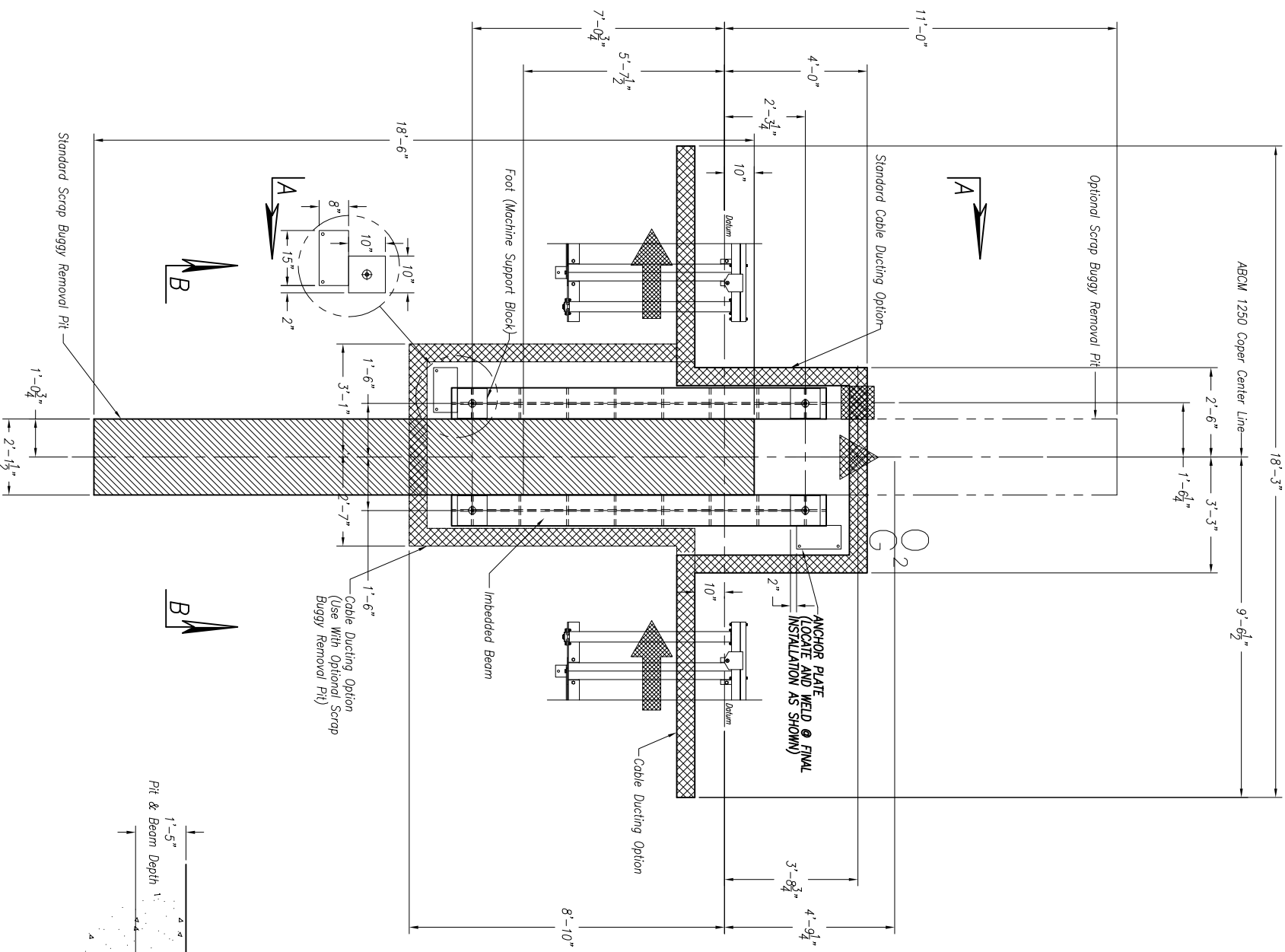
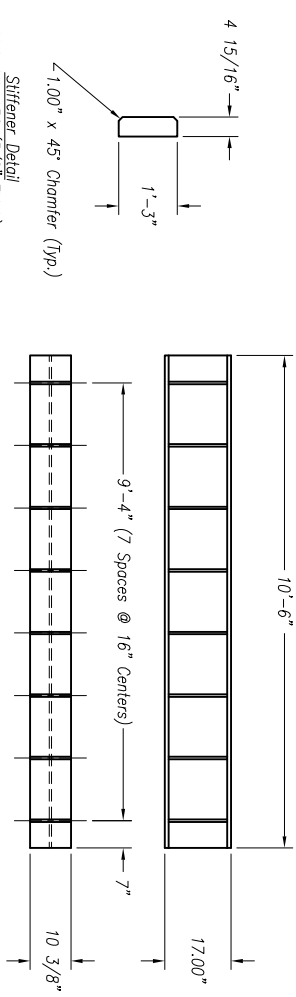


!!!NOTE: DO NOT DRILL HOLES FOR ANCHOR PLATES UNTIL MACHINE IS IN PLACE AND LEVEL AT FINAL INSTALLATION!!!



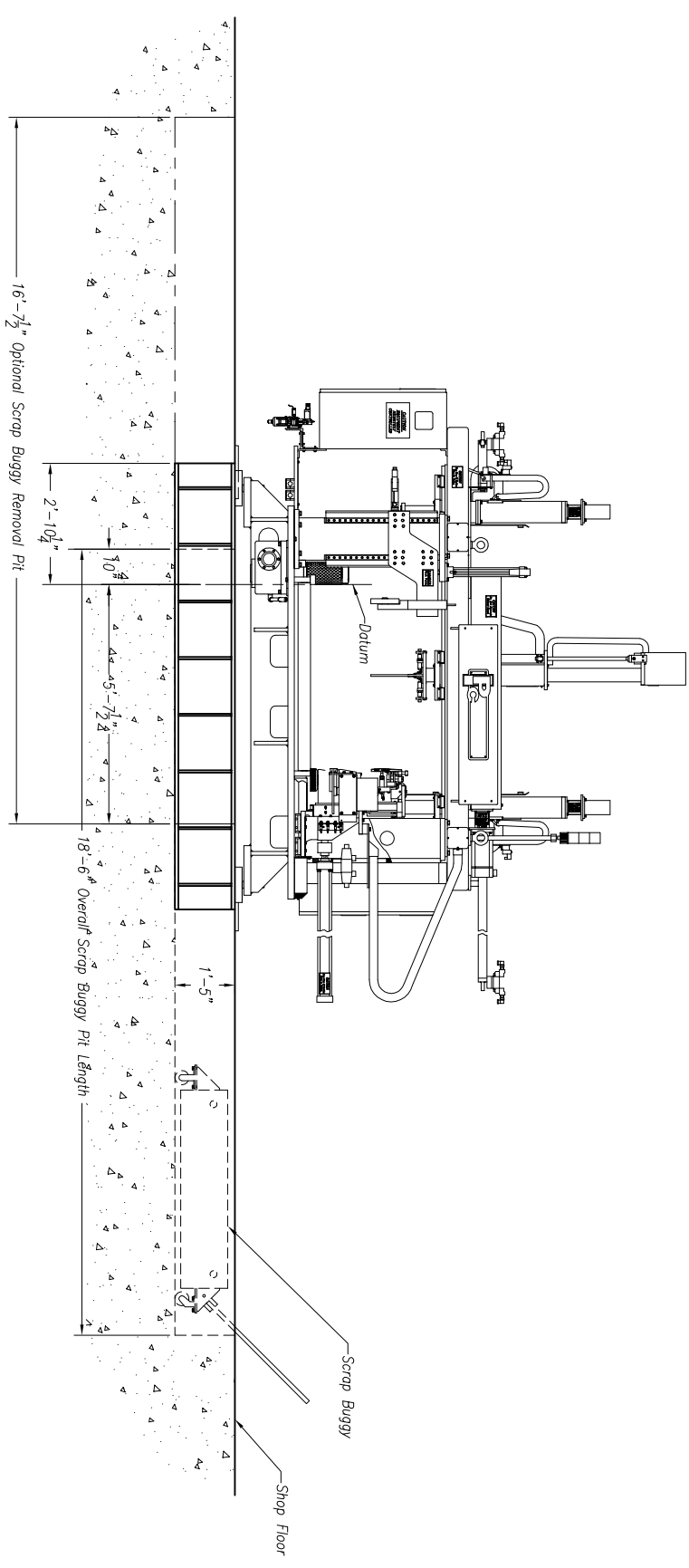
CABLE DUCT DETAIL

CUSTOMER TO SUPPLY COVER: 1/4" THICK X 7 1/4" WIDE
INSTALLED AFTER FINAL FIELD WIRING & PIPING

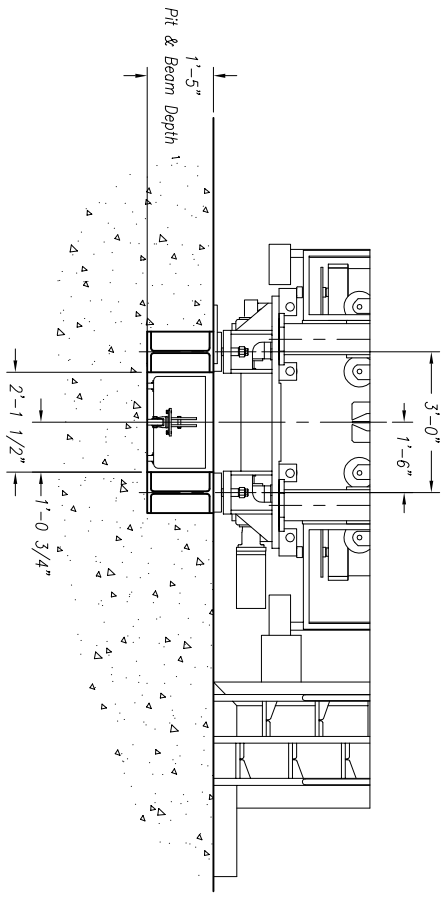


NOTE:
(16) Stiffeners Per Beam
(32) Total-Weld In Place
With 1/4" Weld (Minimum)

Imbedded Beam & Stiffener Weldment
(2) Req'd
Beam Material: W16 x 100#/ft.



**Section A-A
(LEFT SIDE VIEW)**



Section B-B

Imbedded Beams For Machines Processing Beams 300#/ft. Or Less Are NOT Required, But ARE Recommended.
Imbedded Beams For Machines Processing Beams Larger Than 300#/ft. ARE Required.

Customer Note:

- 1.) Scrap Buggy Pit IS NOT Req'd When Machine Passline Is 30.00" Or Greater. However A Pit Is Recommended For Larger Scrap Buggy Capacity.
- 2.) Imbedded Beams With Stiffeners ARE Req'd Regardless Of Scrap Buggy Pit Use.
- 3.) A Minimum Of 6.00" Of Concrete Is Req'd Beneath All Pits & Beams.

E					
D					
C					
B					
A					
LET	REVISION/C/N #	BY	DATE	THIS PRINT IS THE PROPERTY OF PEDDINGHAUS CORP. AND IS NOT TO BE USED IN ANY MANNER ATTRIBUTED TO THE ADDRESS OF SAID COMPANY.	

Peddighaus Corp.
BRADLEY, ILL. U.S.A.
ABCM 1250/3D Coping Machine
For

URGENT SAFETY NOTE
Because of the complexity of this system, the user assumes full responsibility to prevent access by unauthorized persons to the system. It is the customer's responsibility to ensure that the system is properly installed and maintained.
DRAWN BY: **J. Alford** SCALE: 1/2" = 1' DATE:
DWG. NO.