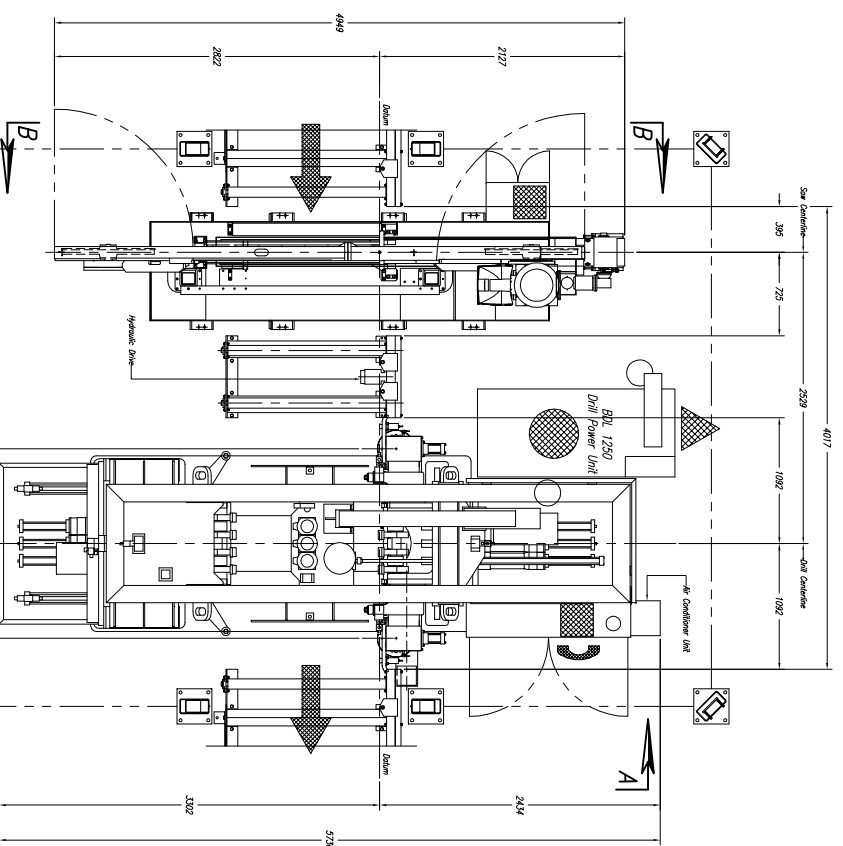
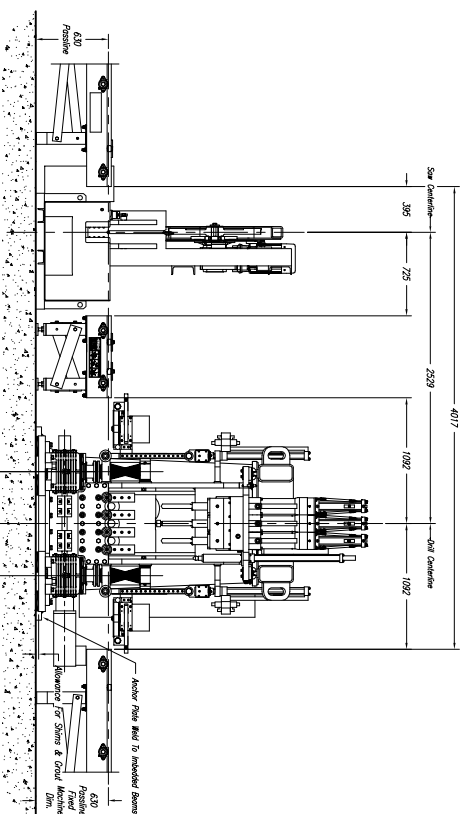


CUSTOMER NOTE!!!!
 All Machines Are Manufactured
 At A 630mm Passline And
 Require A CUSTOMER SUPPLIED
 Pit Or Platform To Achieve Any
 Other Passline Requested.



BDL 1250 Drill Control (With 20"-0" Cable)



View C-C

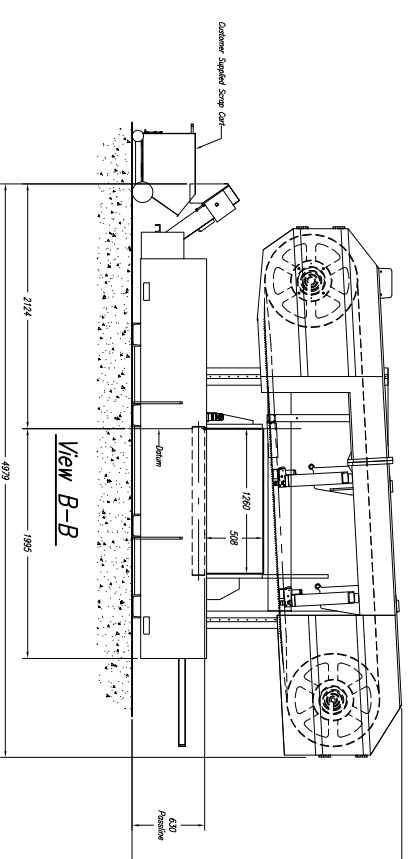
Approximate Machine Weight
 BDL 1250 - 12,156kg
 1250 Saw - 5,037kg

1250 Band Saw NOTES:

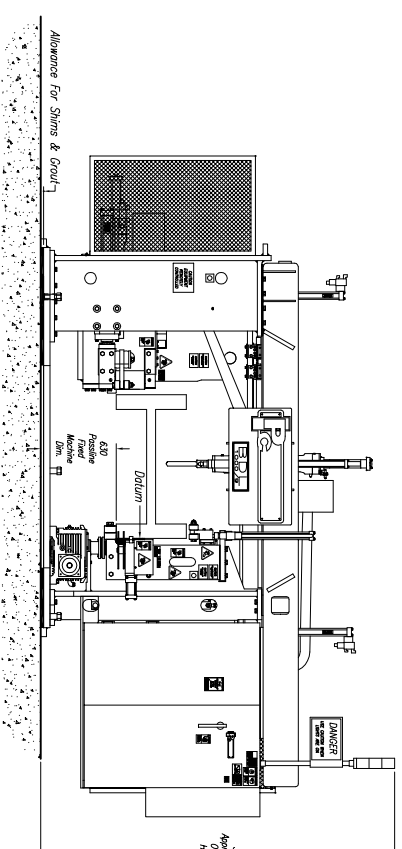
- 1.) Passline of Equipment Based on 630mm from Floorline
- 2.) Concrete Under Equipment/Beams & Pits to be a Minimum of 200mm Thick
- 3.) Primary 400 V., 3 Ph., 50 Hz. [Req'd @ each]
- 4.) Total kW for Equipment = 31 kW (59 Amps)
- 5.) Air Requirement: 6 205 bar, 0.057 SCMM Min. Free Air [Req'd @ Saw]
- 6.) Anchor Bolts (Controls Stand) 12mm Anchor Bolts Or Equal [7 Req'd]
- 7.) Anchor Bolts (Machine & Safety Stands) 20mm Anchor Bolts or Equal [24 Req'd]
- 8.) Saw Coolant: Peddi Cool {3.5 L Req'd}

BDL 1250 Drill NOTES:

- 1.) Passline of Equipment Based on 630mm from Floorline
- 2.) Concrete Under Equipment/Beams & Pits to be a Minimum of 200mm Thick
- 3.) Primary 400 V., 3 Ph., 50 Hz. [Req'd @ each]
- 4.) Total kW for Equipment = 15 HP 70 kW (133 Amps)
- 5.) Air Requirement With Out Signoscript: 5.52 bar, 0.85 SCMM Min. Free Air [Req'd @ each]
- 6.) Air Requirement With Signoscript: 5.52 bar, 1.42 SCMM Min. Free Air [Req'd @ each]
- 7.) Hydraulic Oil (Mobil DPE #24 Or Equal) [Req'd @ Each] {454 L Total}
- 8.) Anchor Bolts (Control Stand) 12mm Anchor Bolt Or Equal [4 Req'd]
- 9.) Anchor Bolts (Machine) 20mm Anchor Bolt Or Equal [28 Req'd]
- 10.) Network/Internet Connection for Data Transfer And Remote Diagnostics [Req'd @ Each]



DRILL SPINDLE GEARBOX LUBRICANT:
 SEE MANUAL FOR DRILL SPINDLE GEARBOX LUBRICANT RECOMMENDATION
DRILL COOLANT RECOMMENDATION:
 SEE MANUAL FOR DRILL COOLANT RECOMMENDATIONS
SAW COOLANT RECOMMENDATION:
 USE PEDDINGHAUS "PEDDI COOL" VEGETABLE BASE COOLANT
 THIS PRODUCT IS FOR MIST COOLANT SYSTEMS
 DO NOT MIX THIS COOLANT WITH WATER



View A-A

E									
D									
C									
B									
A									
LET.									

Peddinghaus Corp.
 BEADLEY, IL, U.S.A.
 BDL 1250 9" Spindle Drill
 & 1250-510 90" Cut Band Saw
 FOR

IMPORTANT Safety Note
 Because of the difficulty of efficiently guard the full length of the system, it is the customer's responsibility to provide safe guarding personnel and to provide safe guarding.

DRAWN BY: **g. Markens** SCALE: 3/8" = 1" DATE: _____
 DRWG. NO. _____

THIS PRINT IS THE PROPERTY OF PEDDINGHAUS CORP. AND IS NOT TO BE USED IN ANY MANNER WITHOUT THE WRITTEN PERMISSION OF PEDDINGHAUS CORP.