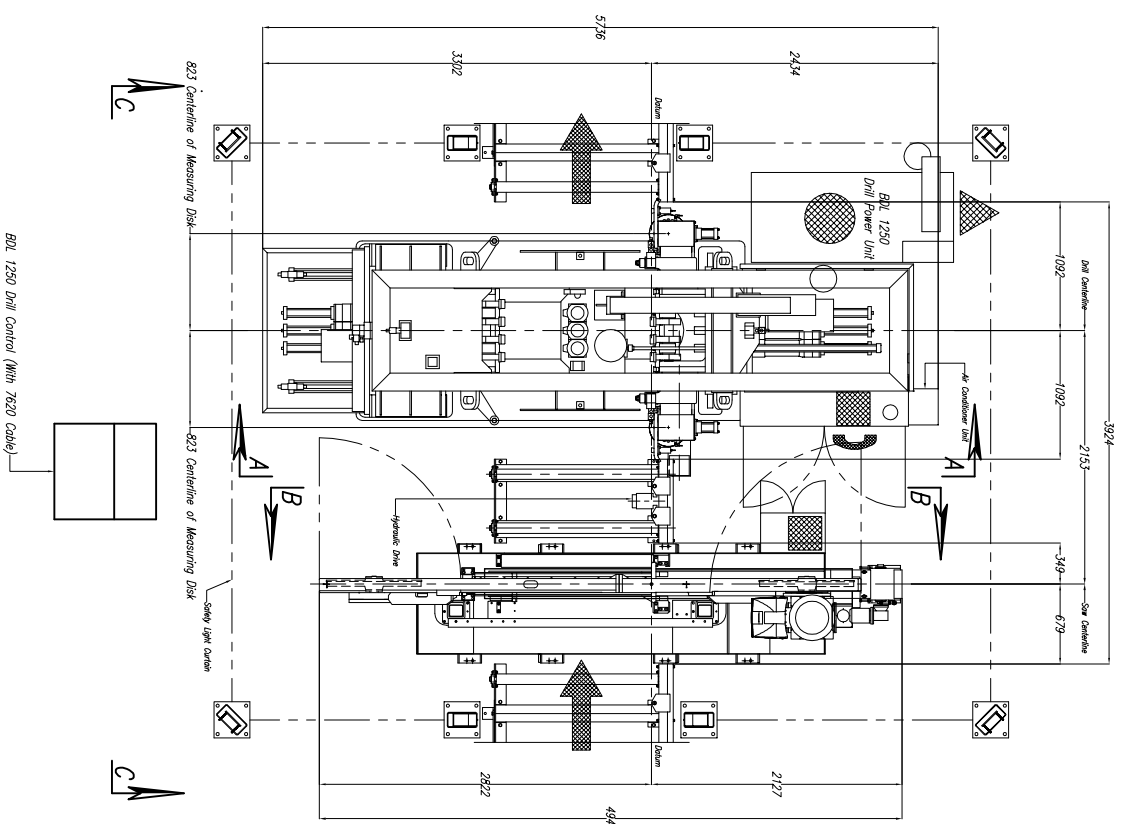
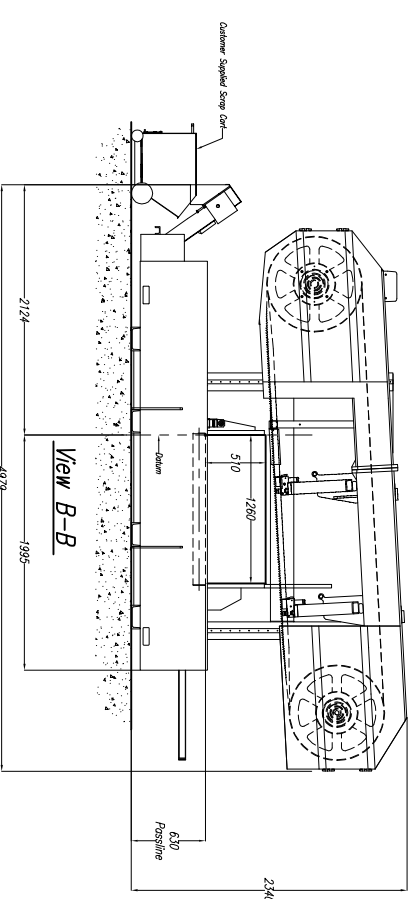
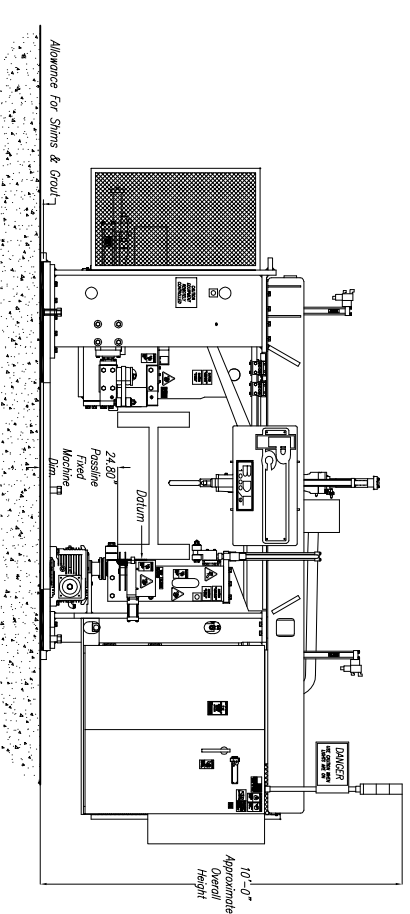


CUSTOMER NOTE!!!!
 All Machines Are Manufactured
 At A 630mm Passline And
 Require A CUSTOMER SUPPLIED
 Pit Or Platform To Achieve Any
 Other Passline Requested.



Approximate Machine Weight
 BDL 1250 – 12,156kg
 1250 SCW – 5,037kg

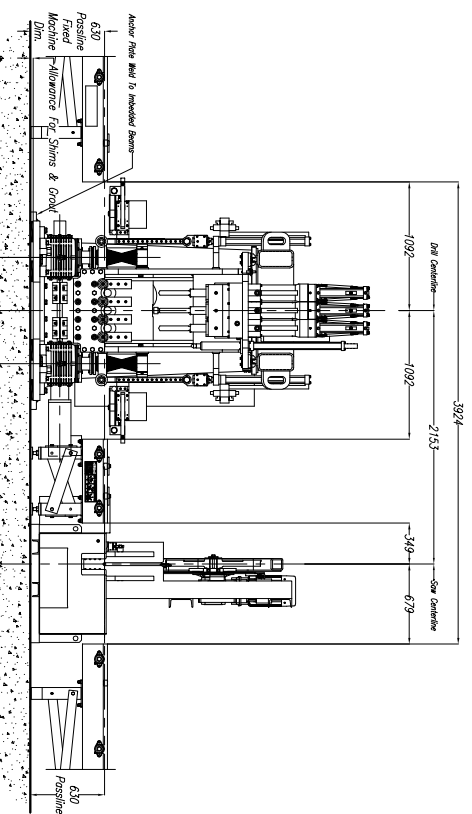


1250 Band Saw NOTES:

- 1.) Passline of Equipment Based on 630mm from Floorline
- 2.) Concrete Under Equipment/Beams & Pits to be a Minimum of 200mm Thick
- 3.) Primary 400 V, 3 Ph., 50 Hz. [Req'd @ each]
- 4.) Total kW for Equipment = 31 kW (59 Amps)
- 5.) Air Requirement: 6.205 bar, 0.057 SCMM Min. Free Air [Req'd @ Saw]
- 6.) Anchor Bolts (Controls Stand) 12mm Anchor Bolts Or Equal [7 Req'd]
- 7.) Anchor Bolts (Machine & Safety Stands) 20mm Anchor Bolts or Equal [24 Req'd]
- 8.) Saw Coolant: Peddi Cool [3.5 L Req'd]

BDL 1250 Drill NOTES:

- 1.) Passline of Equipment Based on 630mm from Floorline
- 2.) Concrete Under Equipment/Beams & Pits to be a Minimum of 200mm Thick
- 3.) Primary 400 V, 3 Ph., 50 Hz. [Req'd @ each]
- 4.) Total kW for Equipment = 15 HP 70 kW (133 Amps)
- 5.) Air Requirement With Out Signoscript: 5.52 bar, 0.85 SCMM Min. Free Air [Req'd @ each]
 Air Requirement With Signoscript: 5.52 bar, 1.42 SCMM Min. Free Air [Req'd @ each]
- 6.) Hydraulic Oil (Mobil DTE #24 Or Equal) [Req'd @ Each] [454 L Total]
- 7.) Anchor Bolts (Control Stand) 12mm Anchor Bolt Or Equal [4 Req'd]
- 8.) Anchor Bolts (Machine) 20mm Anchor Bolt Or Equal [28 Req'd]
- 9.) Network/Internet Connection for Data Transfer And Remote Diagnostics [Req'd @ Each]



View B-B

View A-A

View B-B

DRILL SPINDLE GEARBOX LUBRICANT:
 FILL ALL THREE (3) DRILL SPINDLE GEARBOX UNITS WITH MOBIL GEAR #600 XP 68" GEAR BOX OIL OR EQUIVALENT! (THIS OIL IS SPECIFICALLY FOR SPUR GEARS IN THIS APPLICATION)

DRILL COOLANT RECOMMENDATION:
 USE TRI CHEM "KLEAR KUT" HEAVY DUTY COOLANT (THIS WILL WORK WITH ANY VARIANCE OF WATER HARDNESS.) THIS PRODUCT MUST BE ADDED TO THE WATER, NOT THE OTHER WAY AROUND (DO NOT ADD WATER TO THIS PRODUCT!) USE APPROX 1:30 PRODUCT TO WATER RATIO FOR STANDARD DUTY APPLICATIONS TO APPROX. 1:10 PRODUCT TO WATER RATIO FOR HEAVY DUTY APPLICATIONS.

SAW COOLANT RECOMMENDATION:
 USE PEDDINGHAUS "PEDDI COOL" VEGETABLE BASE COOLANT THIS PRODUCT IS FOR MIST COOLANT SYSTEMS DO NOT MIX THIS COOLANT WITH WATER

Peddinghaus Corp.		IMPORTANT Safety Note:	
BRADLEY, ILL. U.S.A.		Because of the difficulty to effectively guard the full length of the system it is the customers responsibility to prevent access by unauthorized personnel and to provide safe crossing.	
BDL 1250 Drill 9 Spindle & 1250-510 90° Cut Band Saw for		SCALE: 1 : 30	DATE:
LET.	REVISION/C.N.#	BY	DATE
		<i>B. Markin</i>	
		DRWG. NO.	

THIS PRINT IS THE PROPERTY OF PEDDINGHAUS CORP. AND IS NOT TO BE USED IN ANY MANNER DETRIMENTAL TO THE INTERESTS OF SAID COMPANY.