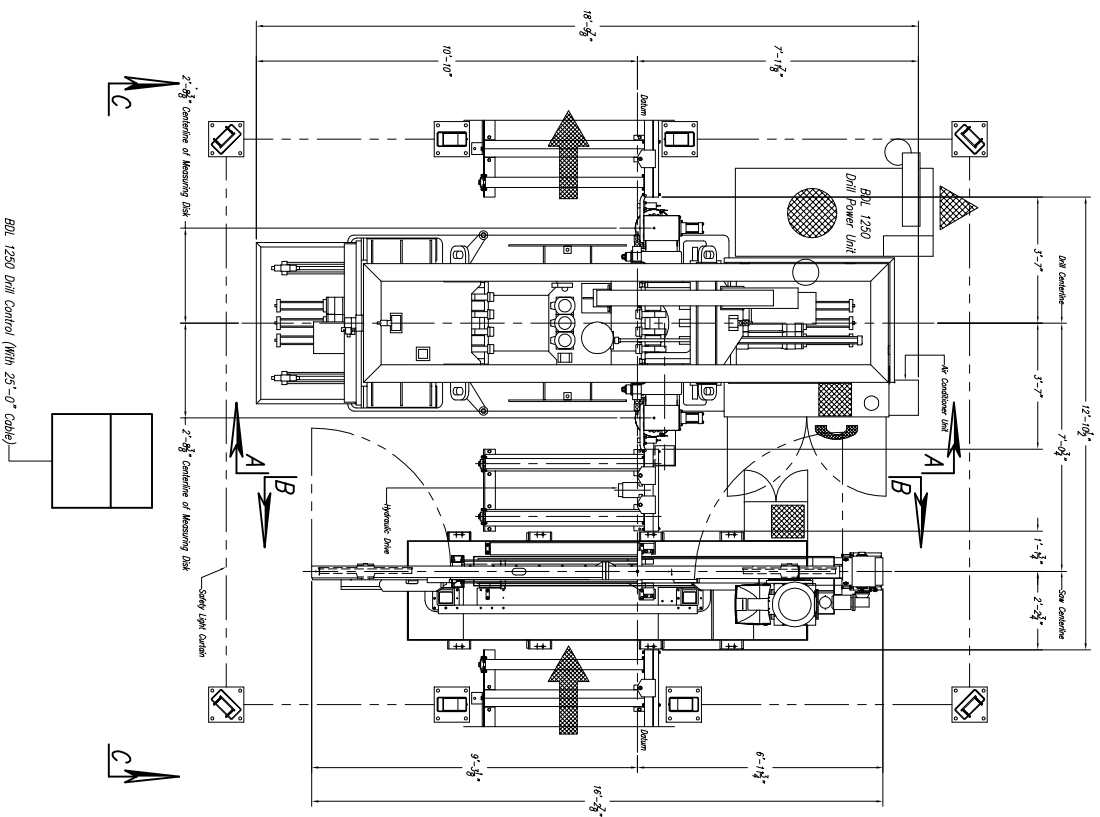


**CUSTOMER NOTE!!!!**  
 All Machines Are Manufactured  
 At A 24.8" Passline And  
 Require A CUSTOMER SUPPLIED  
 Pit Or Platform To Achieve Any  
 Other Passline Requested.



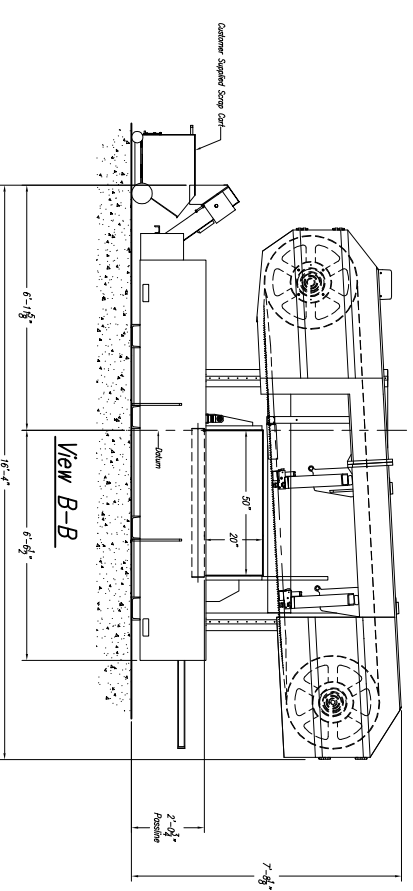
**Approximate Machine Weight**  
 BDL 1250 - 26,800 lbs  
 1250-510 - 11,105 lbs

**BDL 1250 Drill Notes:**

- 1) Passline of Equipment Based on 24.8" from Floorline
- 2) Concrete Under Equipment/Beams & Pits to be a Minimum of 6" Thick
- 3) Primary 460 V., 3 Ph., 60 Hz. [Req'd @ each ]
- 4) Total K.V.A. for Equipment = 39 K.V.A. (49 Amps)
- 5) Air Requirement With Out Signoscript: 80 PSIG, 30 SCFM Min. Free Air [Req'd @ each ]  
 Air Requirement With Signoscript: 80 PSIG, 50 SCFM Min. Free Air [Req'd @ each ]
- 6) Hydraulic Oil (Mobil DTE #24 Or Equal) [Req'd @ Each ] 1 } 120 Gal. Total
- 7) Anchor Bolts (Control Stand) 1/2" T/W Red Head WS-1270 Or Equal [4 Req'd]
- 8) Anchor Bolts (Machine & Safety Stands) 3/4" T/W Red Head WS-3470 Or Equal [28 Req'd]
- 9) Network/Internet Connection for Data Transfer and Remote Diagnostics [Req'd @ Each ]

**1250 Bond Saw Notes:**

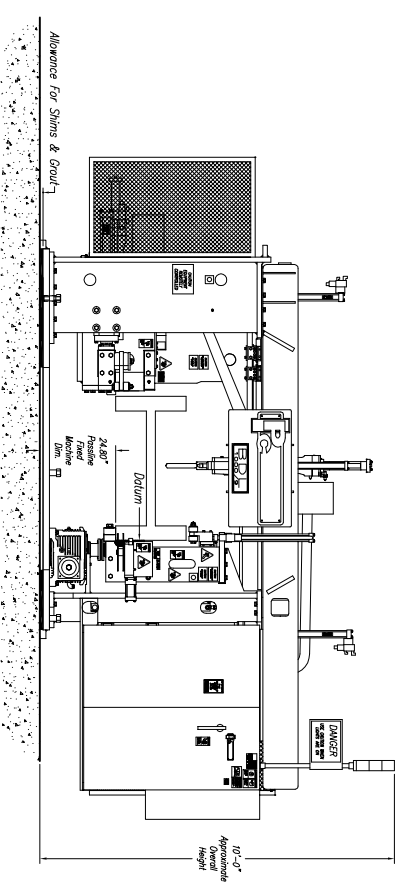
- 1) Passline of Equipment Based on 24.8" from Floorline
- 2) Concrete Under Equipment/Beams & Pits to be a Minimum of 6" Thick
- 3) Primary 460 V., 3 Ph., 60 Hz. [Req'd @ each ]
- 4) Total K.V.A. for Equipment = 39 K.V.A. (49 Amps)
- 5) Air Requirement: 90 PSIG, 2 SCFM Min. Free Air [Req'd @ Saw ]
- 6) Anchor Bolts (Control Stand) 1/2" T/W Red Head WS-1270 Or Equal [7 Req'd]
- 7) Anchor Bolts (Machine & Safety Stands) 3/4" T/W Red Head WS-3470 Or Equal [24 Req'd]
- 8) Saw Coolant: Peditl Cool } Gal. Req'd



**DRILL SPINDLE GEARBOX LUBRICANT:**  
 FILL ALL THREE (3) DRILL SPINDLE GEARBOX UNITS WITH "MOBIL GEAR #600 XP 68" GEAR BOX OIL OR EQUIVALENT! (THIS OIL IS SPECIFICALLY FOR SPIR GEARS IN THIS APPLICATION)

**DRILL COOLANT RECOMMENDATION:**  
 USE TRI CHEM "KLEAR KUT" HEAVY DUTY COOLANT (THIS WILL WORK WITH ANY VARIANCE OF WATER HARDNESS.) THIS PRODUCT MUST BE ADDED TO THE WATER, NOT THE OTHER WAY AROUND (DO NOT ADD WATER TO THIS PRODUCT!) USE APPROX 1:30 PRODUCT TO WATER RATIO FOR STANDARD DUTY APPLICATIONS TO APPROX. 1:10 PRODUCT TO WATER RATIO FOR HEAVY DUTY APPLICATIONS.

**SAW COOLANT RECOMMENDATION:**  
 USE PEDDINGHAUS "PEDDL COOL" VEGETABLE BASE COOLANT THIS PRODUCT IS FOR MIST COOLANT SYSTEMS DO NOT MIX THIS COOLANT WITH WATER



**View A-A**

**View B-B**

E					
D					
C					
B					
A					
LET.					

Peddinghaus Corp.  
 BRADLEY, ILL. U.S.A.  
 BDL 1250 90° Spindle Drill  
 & 1250-510 90° Cut Drill Saw  
 For

IMPORTANT SAFETY NOTE:  
 Because of the inherent hazards of the full length of the system, it is the customer's responsibility to prevent access by unauthorized persons to the system.

DRAWN BY: **J. Alford** SCALE: 3/8" = 1" DATE:  
 FOR: **J. Alford** DWG. NO.:

THIS PRINT IS THE PROPERTY OF PEDDINGHAUS CORP. AND IS NOT TO BE USED IN ANY MANNER DETRIMENTAL TO THE INTERESTS OF SAID COMPANY.