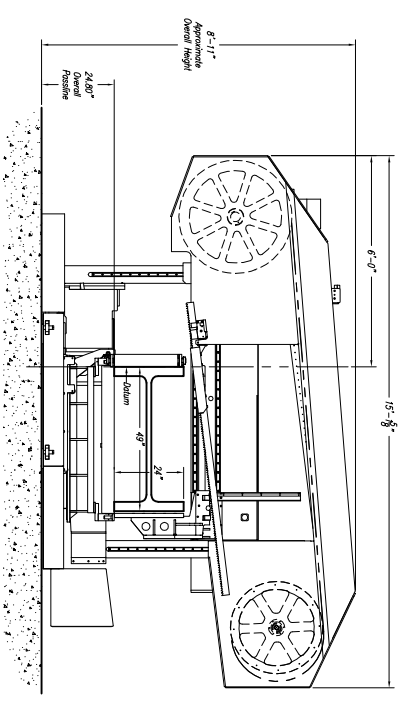
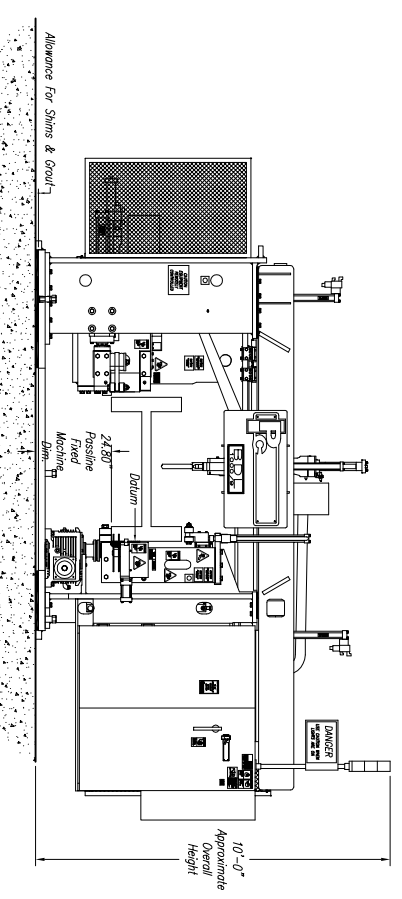


**CUSTOMER NOTE!!!!**  
 Machines Shown Are Manufactured  
 At A 24.8" Passline And  
 Require A CUSTOMER SUPPLIED  
 Pit Or Platform To Achieve Any  
 Other Passline Requested.

**Approximate Machine Weight**  
 BDL 1250/9B - 26,800 lbs  
 1250-600 DG - 14,660 lbs



**1250-600 SOW NOTES:**

- 1.) Passline of Equipment Based on 24.8" from Floorline
- 2.) Concrete Under Equipment/Beams & Pits to be a Minimum of 6" Thick
- 3.) Primary 460 V., 3 Ph., 60 Hz. [Req'd @ each]
- 4.) Total K.V.A. for Equipment = 22.5 K.V.A. (50 Amps)
- 5.) Air Requirements: 90-100 PSIG, 2 SCFM. Min. Free Air [Req'd @ each]
- 6.) Hydraulic Oil (Mobil DTE #24 Or Equal) [Req'd @ Each] 13.5 Gal. Total
- 7.) Anchor Bolts (Control Stand) 1/2" ITW Red Head WS-1270 Or Equal [4 Req'd]
- 8.) Anchor Bolts (Machine & Safety Stands) 3/4" ITW Red Head WS-3470 Or Equal [24 Req'd]

**BDL 1250 DRILL NOTES:**

- 1.) Passline of Equipment Based on 24.8" from Floorline
- 2.) Concrete Under Equipment/Beams & Pits to be a Minimum of 6" Thick
- 3.) Primary 460 V., 3 Ph., 60 Hz. [Req'd @ each]
- 4.) Total K.V.A. for Equipment = 15 HP 88 KVA (110 Amps)
- 5.) Air Requirement With Out Signoscript: 80 PSIG, 30 SCFM Min. Free Air [Req'd @ each]
- 6.) Hydraulic Oil (Mobil DTE #24 Or Equal) [Req'd @ Each] 1120 Gal. Total
- 7.) Anchor Bolts (Control Stand) 1/2" ITW Red Head WS-1270 Or Equal [4 Req'd]
- 8.) Anchor Bolts (Machine & Safety Stands 3/4" ITW Red Head WS-3470 Or Equal [28 Req'd]
- 9.) Network/Internet Connection for Data Transfer and Remote Diagnostics [Req'd @ Each]

**SAW COOLANT RECOMMENDATION:**  
 USE PEDDINGHAUS "PEUDO COOL" VEGTABLE BASE COOLANT  
 THIS PRODUCT IS FOR MIST COOLANT SYSTEMS  
 DO NOT MIX THIS COOLANT WITH WATER

**DRILL COOLANT RECOMMENDATION:**  
 SEE MANUAL FOR DRILL COOLANT RECOMMENDATIONS

**DRILL SPINDLE GEARBOX LUBRICANT:**  
 SEE MANUAL FOR SPINDLE GEARBOX LUBRICANT RECOMMENDATIONS

E									
D									
C									
B									
A									
LET.									

**Peddinghaus Corp.**  
 BRADLEY, ILL. U.S.A.

BDL 1250/9B Drill  
 & 1250-600 DG for

DRAWN BY: *J. Markin* SCALE: 1/2" = 1'  
 DATE: \_\_\_\_\_  
 DRWG. NO. \_\_\_\_\_

IMPORTANT SAFETY NOTE:  
 Because of the difficulty to effectively guard the full responsibility to prevent access by unauthorized personnel and to provide safe crossing.

THIS PRINT IS THE PROPERTY OF PEDDINGHAUS CORP. AND IS NOT TO BE USED IN ANY MANNER DETRIMENTAL TO THE INTERESTS OF SAID COMPANY.