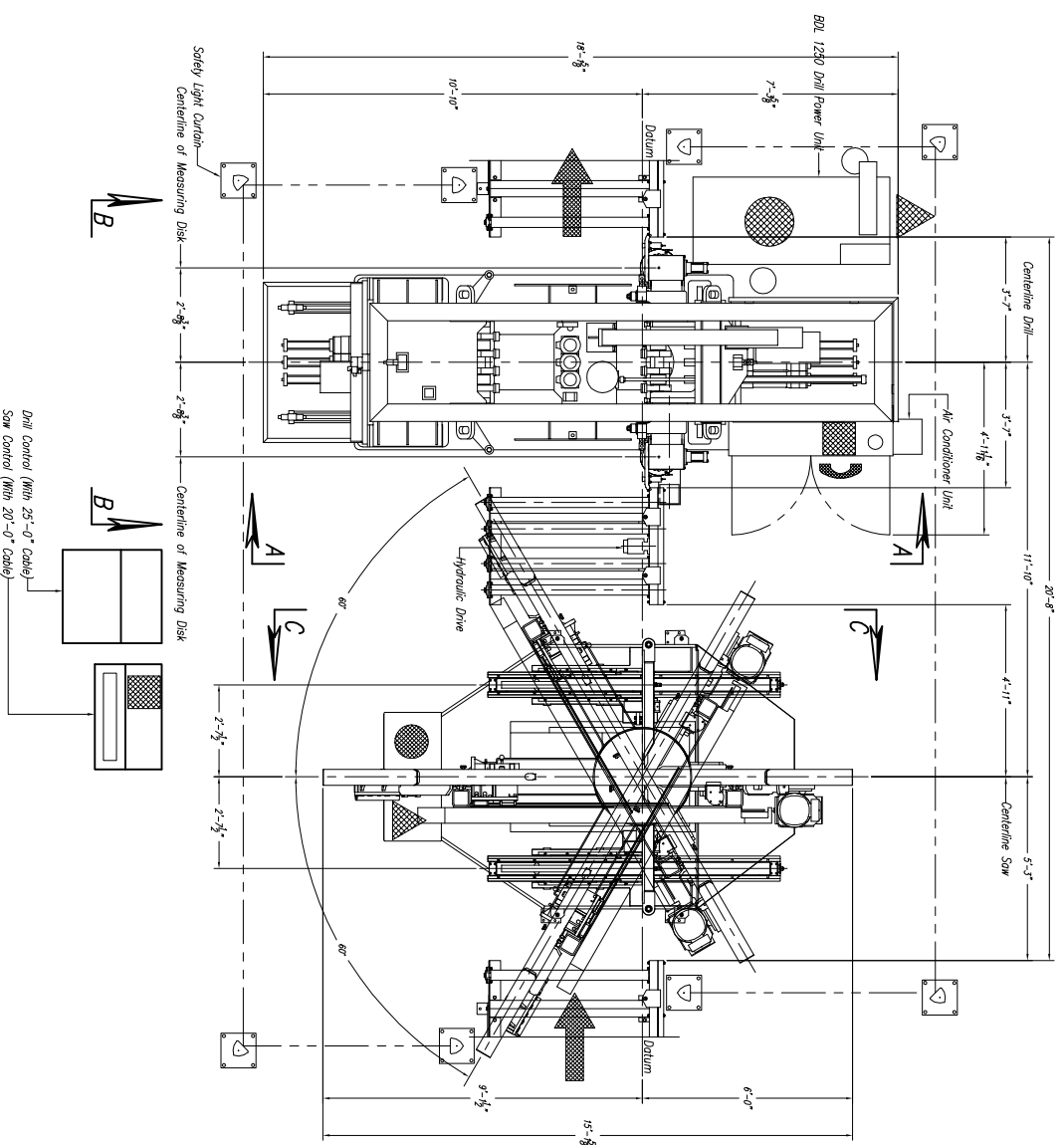
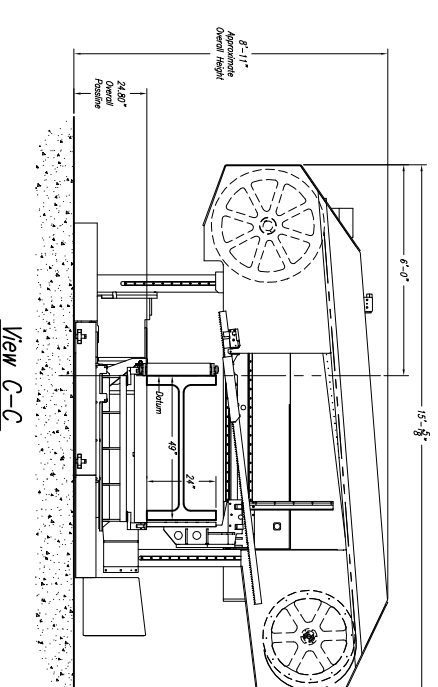
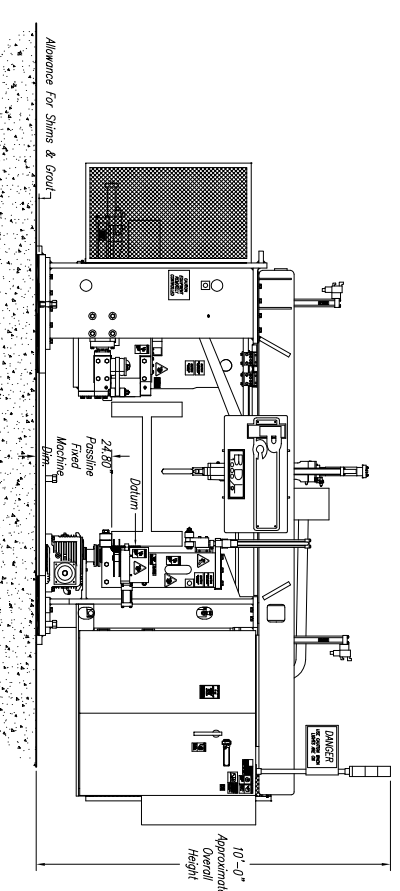
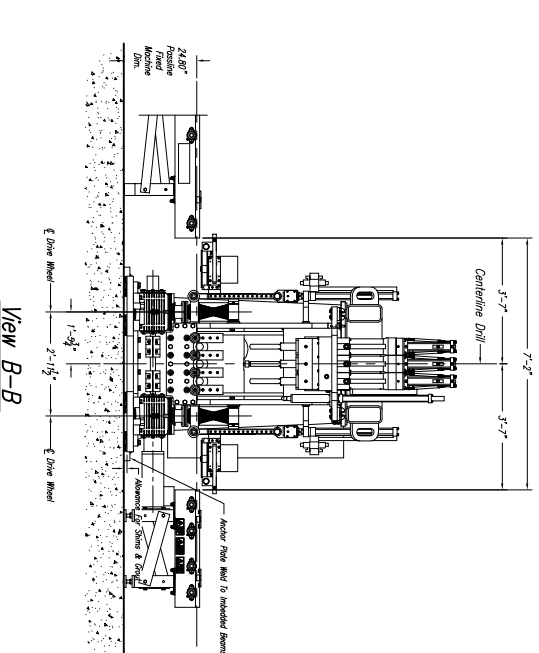


**CUSTOMER NOTE!!!!**  
 Machines Shown Are Manufactured  
 At A 24.8" Passline And  
 Require A CUSTOMER SUPPLIED  
 Pit Or Platform To Achieve Any  
 Other Passline Requested.



**Approximate Machine Weight**  
 BDL 1250/9B - 26,800 lbs  
 1250-600 DG - 14,660 lbs



**1250-600 Saw NOTES:**

- 1.) Passline of Equipment Based on 24.8" from Floorline
- 2.) Concrete Under Equipment/Beams & Pits to be a Minimum of 6" Thick
- 3.) Primary 460 V., 3 Ph., 60 Hz. [Req'd @ each ]
- 4.) Total K.V.A. for Equipment = 22.5 K.V.A. (30 Amps)
- 5.) Air Requirements: 90-100 PSIG, 2 SCFM, Min. Free Air [Req'd @ each ] {3.5 Gal. Total}
- 6.) Hydraulic Oil (Mobil DTE #24 Or Equal) [Req'd @ Each ] {120 Gal. Total}
- 7.) Anchor Bolts (Control Stand) 1/2" ITW Red Head WS-1270 Or Equal [4 Req'd]
- 8.) Anchor Bolts (Machine & Safety Stands) 3/4" ITW Red Head WS-3470 Or Equal [24 Req'd]

**BDL 1250 DRILL NOTES:**

- 1.) Passline of Equipment Based on 24.8" from Floorline
- 2.) Concrete Under Equipment/Beams & Pits to be a Minimum of 6" Thick
- 3.) Primary 460 V., 3 Ph., 60 Hz. [Req'd @ each ]
- 4.) Total K.V.A. for Equipment = 15 HP 88 K.V.A. (110 Amps)
- 5.) Air Requirement With Out Signoscript: 80 PSIG, 30 SCFM Min. Free Air [Req'd @ each ]
- 6.) Air Requirement With Signoscript: 80 PSIG, 50 SCFM Min. Free Air [Req'd @ each ]
- 7.) Hydraulic Oil (Mobil DTE #24 Or Equal) [Req'd @ Each ] {120 Gal. Total}
- 8.) Anchor Bolts (Control Stand) 1/2" ITW Red Head WS-1270 Or Equal [4 Req'd]
- 9.) Anchor Bolts (Machine & Safety Stands 3/4" ITW Red Head WS-3470 Or Equal [28 Req'd]
- 9.) Network/Internet Connection for Data Transfer and Remote Diagnostics [Req'd @ Each ]

**SAW COOLANT RECOMMENDATION:**  
 USE PEDDINGHAUS "PEDO COOL" VEGETABLE BASE COOLANT  
 THIS PRODUCT IS FOR MIST COOLANT SYSTEMS  
 DO NOT MIX THIS COOLANT WITH WATER

**DRILL COOLANT RECOMMENDATION:**  
 SEE MANUAL FOR DRILL COOLANT RECOMMENDATIONS

**DRILL SPINDLE GEARBOX LUBRICANT:**  
 SEE MANUAL FOR SPINDLE GEARBOX LUBRICANT RECOMMENDATIONS

Peddinghaus Corp.		IMPORTANT Safety Note	
BRADLEY, ILL. U.S.A.		Because of the inherent danger of the equipment, it is the responsibility of the user to provide safe access by unauthorized personnel and to provide safe crossing.	
BDL 1250/9B Drill		DRAWN BY:	SCALE: 1/2" = 1'
& 1250-600 DG for		DATE:	
A		B. Marking	
REVISION/C/N.#		BY	
DATE		DATE	
THIS PRINT IS THE PROPERTY OF PEDDINGHAUS CORP. AND IS NOT TO BE USED IN ANY MANNER DETRIMENTAL TO THE INTERESTS OF SAID COMPANY.			