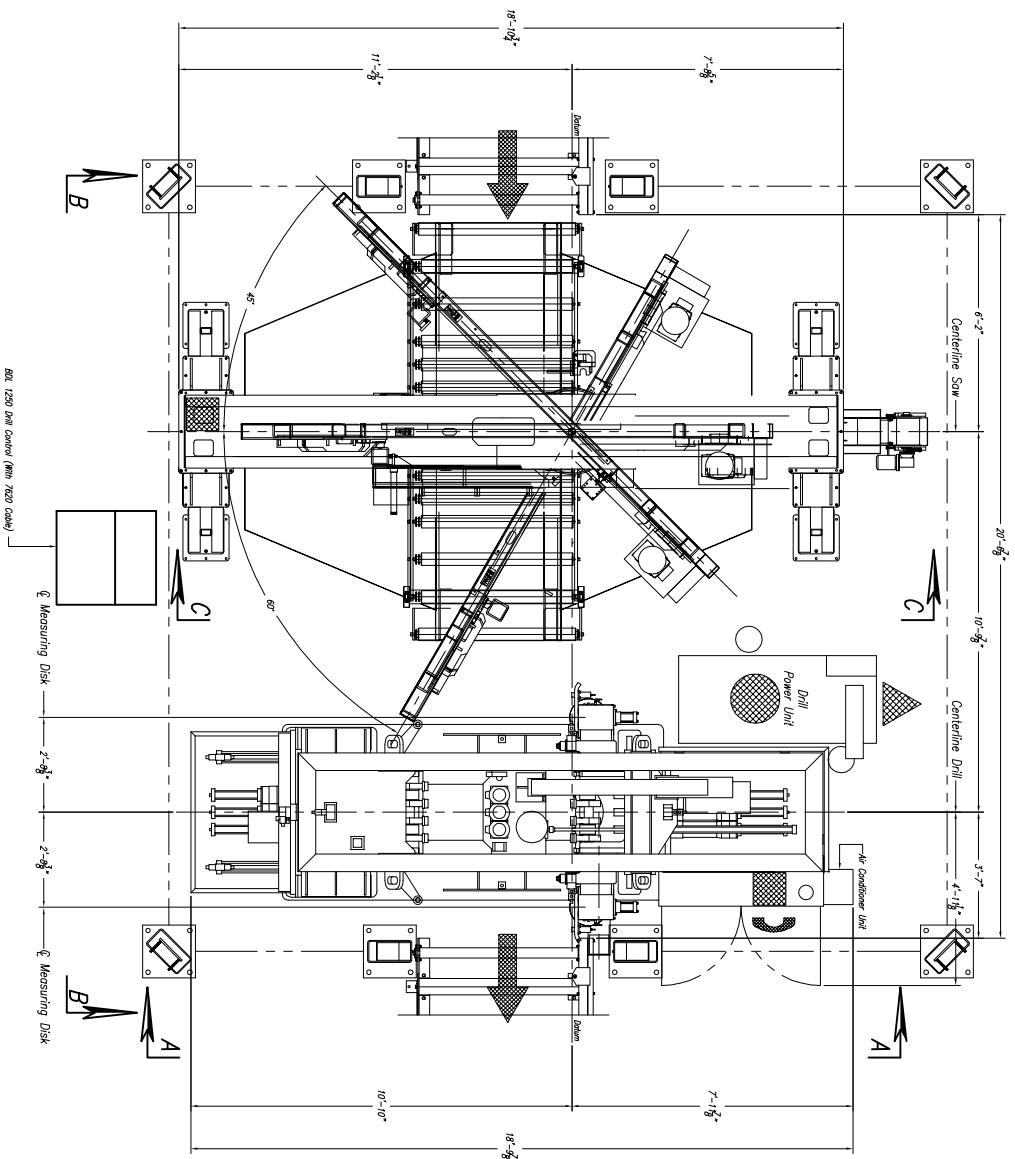


CUSTOMER NOTE!!!!
 All Machines Are Manufactured
 At A 24.8" Passline And
 Require A CUSTOMER SUPPLIED
 Pit Or Platform To Achieve Any
 Other Passline Requested.

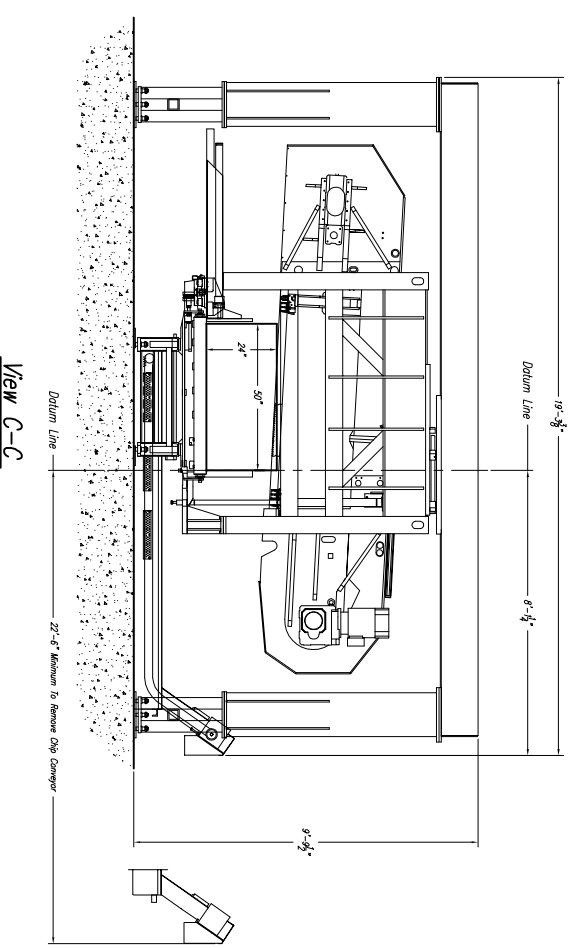
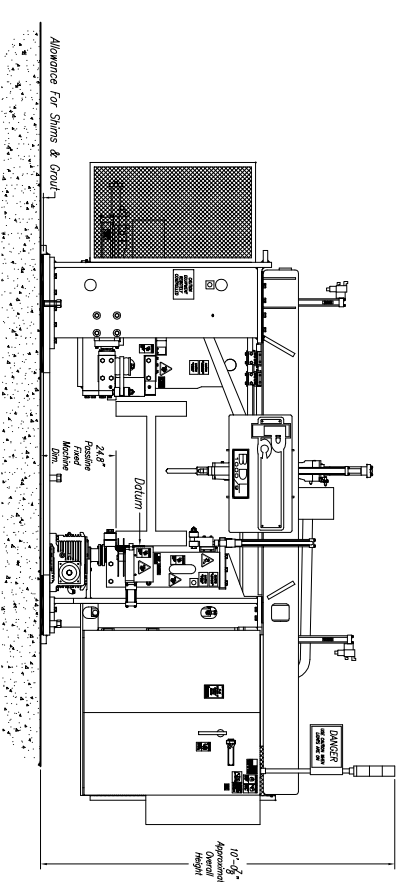
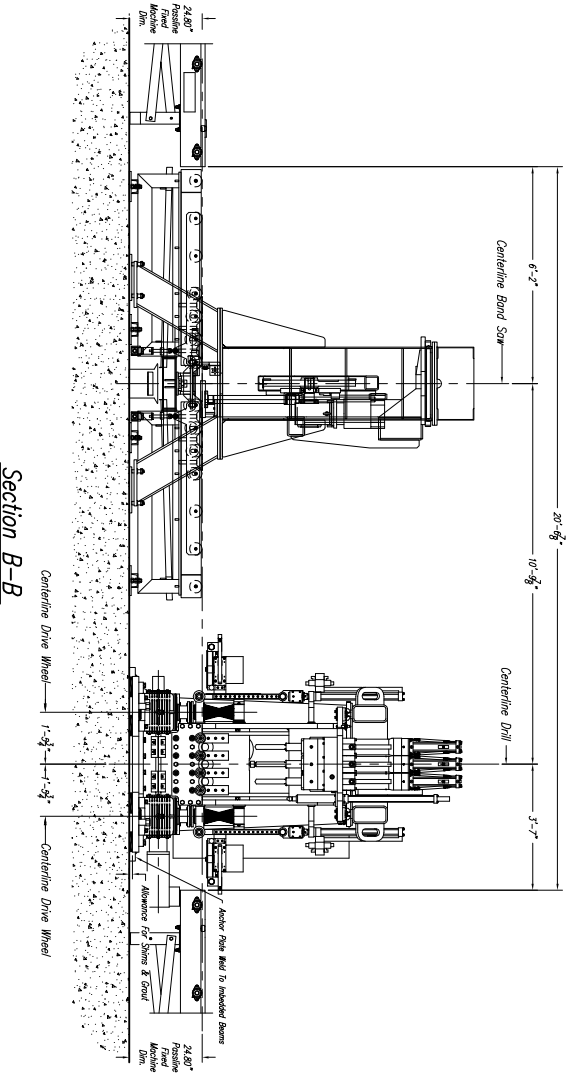


Approximate Machine Weights
 BDL 1250 – 26,800 lbs
 1270-610 – 16,535 lbs

SAW COOLANT RECOMMENDATION:
 USE PEDDINGHAUS "FEEDI COOL" VEGETABLE BASE COOLANT
 THIS PRODUCT IS FOR MIST COOLANT SYSTEMS
 DO NOT MIX THIS COOLANT WITH WATER

DRILL SPINDLE GEARBOX LUBRICANT:
 FILL ALL THREE (3) DRILL SPINDLE GEARBOX UNITS
 WITH "MOBIL GEAR #600 XP 68" GEAR BOX OIL OR EQUIVALENT!
 (THIS OIL IS SPECIFICALLY FOR SPUR GEARS IN THIS APPLICATION)

DRILL COOLANT RECOMMENDATION:
 USE TRI CHEM "KLEAR KUT" HEAVY DUTY COOLANT (THIS
 WILL WORK WITH ANY VARIANCE OF WATER HARDNESS.)
 THIS PRODUCT MUST BE ADDED TO THE WATER, NOT
 THE OTHER WAY AROUND (DO NOT ADD WATER TO
 THIS PRODUCT) USE APPROX. 1:30 PRODUCT TO WATER
 RATIO FOR STANDARD DUTY APPLICATIONS TO APPROX. 1:10
 PRODUCT TO WATER RATIO FOR HEAVY DUTY APPLICATIONS.



- 1270-610 Saw NOTES:**
- 1.) Passline of Equipment Based on 24.8" from Floorline
 - 2.) Concrete Under Equipment/Beams & Pits to be a Minimum of 6" Thick
 - 3.) Primary 460 V., 3 Ph., 60 Hz. [Req'd @ each]
 - 4.) Total K.V.A. for Equipment = 35 K.V.A. (44 Amps)
 - 5.) Anchor Bolts (Control Stand) 1/2" ITW Red Head WS-1270 Or Equal [7 Req'd]
 - 6.) Anchor Bolts (Machine & Safety Stands) 3/4" ITW Red Head WS-3470 Or Equal [32 Req'd]

BDL 1250 Drill NOTES:

- 1.) Passline of Equipment Based on 24.8" from Floorline
- 2.) Concrete Under Equipment/Beams & Pits to be a Minimum of 6" Thick
- 3.) Primary 460 V., 3 Ph., 30 Hz. [Req'd @ each]
- 4.) Total K.V.A. for Equipment = 15 HP 88 K.V.A. (110 Amps)
- 5.) Air Requirement With Out Signoscript: 80 PSIG, 50 SCFM Min. Free Air [Req'd @ each]
- 6.) Air Requirement With Signoscript: 80 PSIG, 30 SCFM Min. Free Air [Req'd @ each]
- 7.) Hydraulic Oil (Mobil DPE #24 Or Equal) [Req'd @ Each] 1120 Gal. Total
- 8.) Anchor Bolts (Control Stand) 1/2" ITW Red Head WS-1270 Or Equal [4 Req'd]
- 9.) Anchor Bolts (Machine) 3/4" ITW Red Head WS-3470 Or Equal [28 Req'd]
- 9.) Network/Internet Connection for Data Transfer And Remote Diagnostics [Req'd @ Each]

Peddinghaus Corp.		Peddinghaus Corp.	
BRADLEY, ILL. U.S.A.		BRADLEY, ILL. U.S.A.	
BDL 1250 Drill 9 Spindle		BDL 1250 Drill 9 Spindle	
& Meba 1270-610 Miter Band Saw		& Meba 1270-610 Miter Band Saw	
For		For	
J. Martin		J. Martin	
DRWG. NO.		DRWG. NO.	
SCALE: 3/8" = 1'		SCALE: 3/8" = 1'	
DATE:		DATE:	
DRAWN BY:		DRAWN BY:	
PERSONNEL:		PERSONNEL:	
RESPONSIBILITY:		RESPONSIBILITY:	
TO PREVENT:		TO PREVENT:	
UNAUTHORIZED:		UNAUTHORIZED:	
ACCESS:		ACCESS:	
IMPORTANT Safety Note:		IMPORTANT Safety Note:	
Because of the difficulty to effectively guard the		Because of the difficulty to effectively guard the	
responsibility to prevent access by unauthorized		responsibility to prevent access by unauthorized	
personnel and to provide safe crossing.		personnel and to provide safe crossing.	
THIS PRINT IS THE PROPERTY OF PEDDINGHAUS CORP. AND IS NOT TO BE USED IN		THIS PRINT IS THE PROPERTY OF PEDDINGHAUS CORP. AND IS NOT TO BE USED IN	
ANY MANNER DETRIMENTAL TO THE INTERESTS OF SAID COMPANY		ANY MANNER DETRIMENTAL TO THE INTERESTS OF SAID COMPANY	
LET.	REVISION/C.N.#	BY	DATE