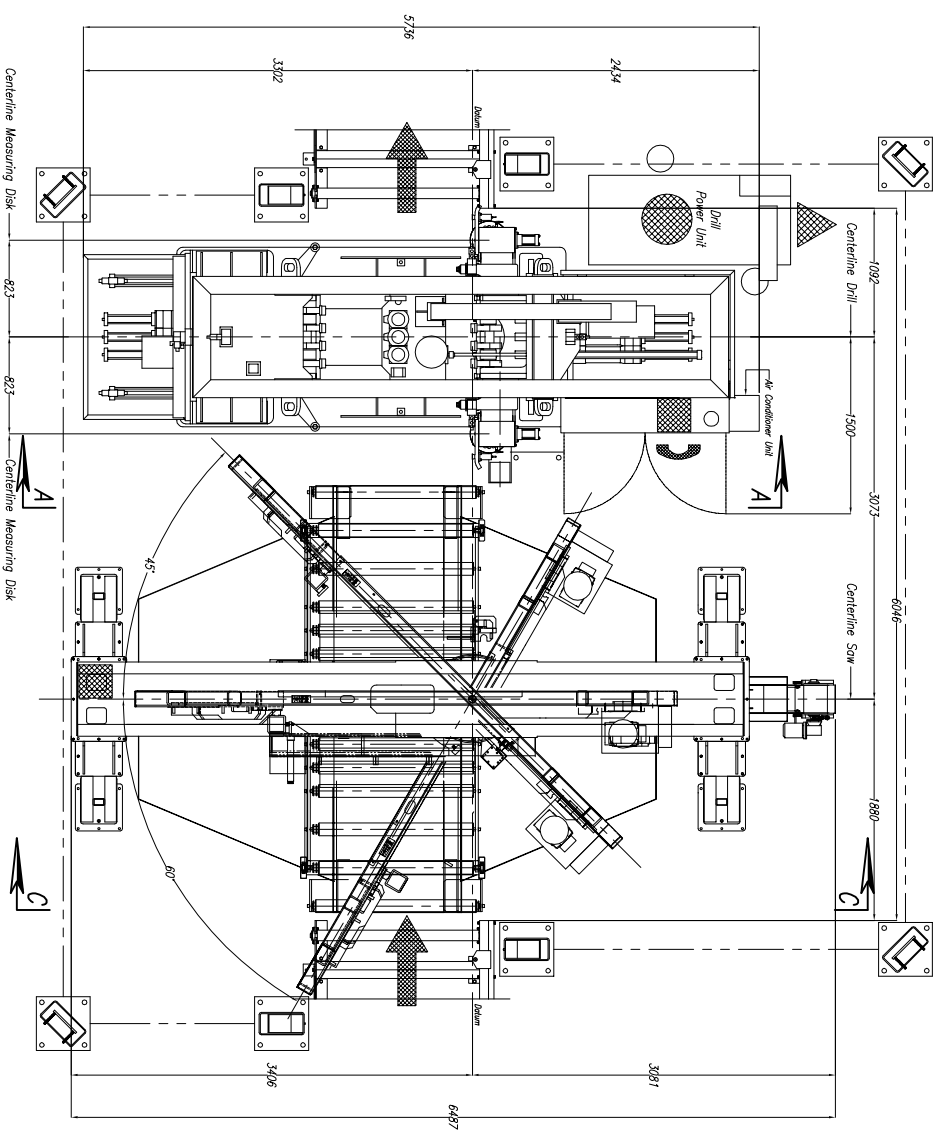


CUSTOMER NOTE!!!!
 All Machines Are Manufactured
 At A 630mm Passline And
 Require A CUSTOMER SUPPLIED
 Pit Or Platform To Achieve Any
 Other Passline Requested.

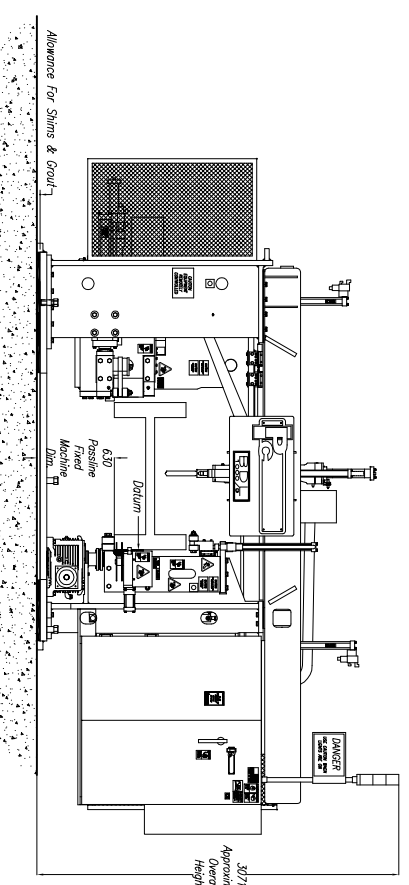


Approximate Machine Weights
 BDL 1250 – 12,156kg
 1270-610 – 7,500kg

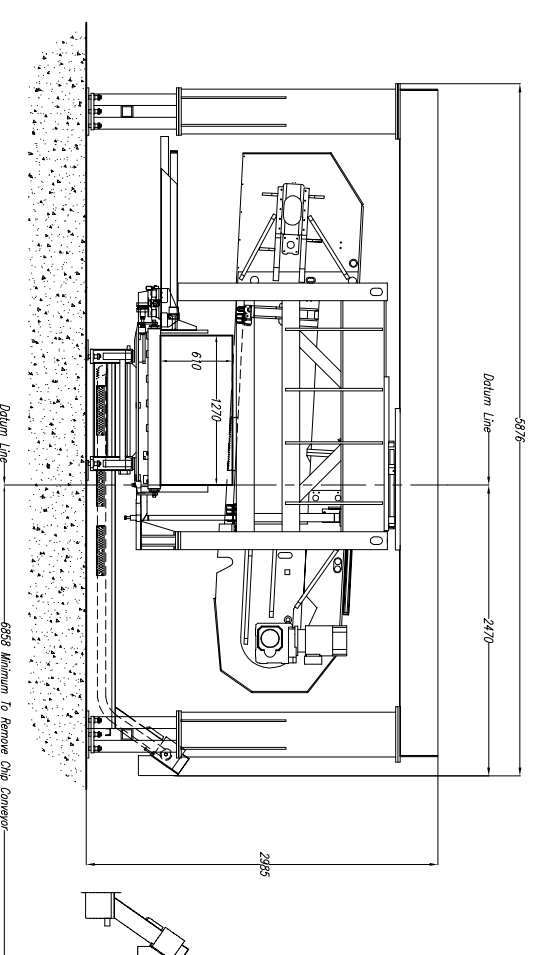
SAW COOLANT RECOMMENDATION:
 USE PEDDINGHAUS "FEED" COOL" VEGETABLE BASE COOLANT
 THIS PRODUCT IS FOR MIST COOLANT SYSTEMS
 DO NOT MIX THIS COOLANT WITH WATER

DRILL SPINDLE GEARBOX LUBRICANT:
 FILL ALL THREE (3) DRILL SPINDLE GEARBOX UNITS
 WITH "MOBIL GEAR #600 XP 68" GEAR BOX OIL OR EQUIVALENT!
 (THIS OIL IS SPECIFICALLY FOR SPUR GEARS IN THIS APPLICATION)

DRILL COOLANT RECOMMENDATION:
 USE TRI CHEM "CLEAR KUT" HEAVY DUTY COOLANT (THIS
 WILL WORK WITH ANY VARIANCE OF WATER HARDNESS.)
 THIS PRODUCT MUST BE ADDED TO THE WATER. NOT
 THE OTHER WAY AROUND (DO NOT ADD WATER TO
 THIS PRODUCT!) USE APPROX 1:30 PRODUCT TO WATER
 RATIO FOR STANDARD DUTY APPLICATIONS TO APPROX 1:10
 PRODUCT TO WATER RATIO FOR HEAVY DUTY APPLICATIONS.



**View A-A
 (RIGHT SIDE VIEW)**



View C-C

1270-610 Saw NOTES:

- 1.) Passline of Equipment Based on 630mm from Floorline
- 2.) Concrete Under Equipment/Beams & Pits to be a Minimum of 200mm Thick
- 3.) Primary 400 V., 3 Ph., 50 Hz. [Req'd @ each]
- 4.) Total kW for Equipment = 28 kW (53 Amps)
- 5.) Anchor Bolts (Control Stand) 12mm Anchor Bolt Or Equal [7 Req'd]
- 6.) Anchor Bolts (Machine & Safety Stands) 20mm Anchor Bolt Or Equal [32 Req'd]

BDL 1250 Drill NOTES:

- 1.) Passline of Equipment Based on 630mm from Floorline
- 2.) Concrete Under Equipment/Beams & Pits to be a Minimum of 200mm Thick
- 3.) Primary 400 V., 3 Ph., 50 Hz. [Req'd @ each]
- 4.) Total kW for Equipment = 15 HP 70 kW (133 Amps)
- 5.) Air Requirement With Out Signoscript: 5.52 bar, 1.42 SCMM Min. Free Air [Req'd @ each]
- 6.) Hydraulic Oil (Mobil DTE #24 Or Equal) [Req'd @ Each] [454 L Total]
- 7.) Anchor Bolts (Control Stand) 12mm Anchor Bolt Or Equal [4 Req'd]
- 8.) Anchor Bolts (Machine) 20mm Anchor Bolt Or Equal [28 Req'd]
- 9.) Network/Internet Connection for Data Transfer And Remote Diagnostics [Req'd @ Each]

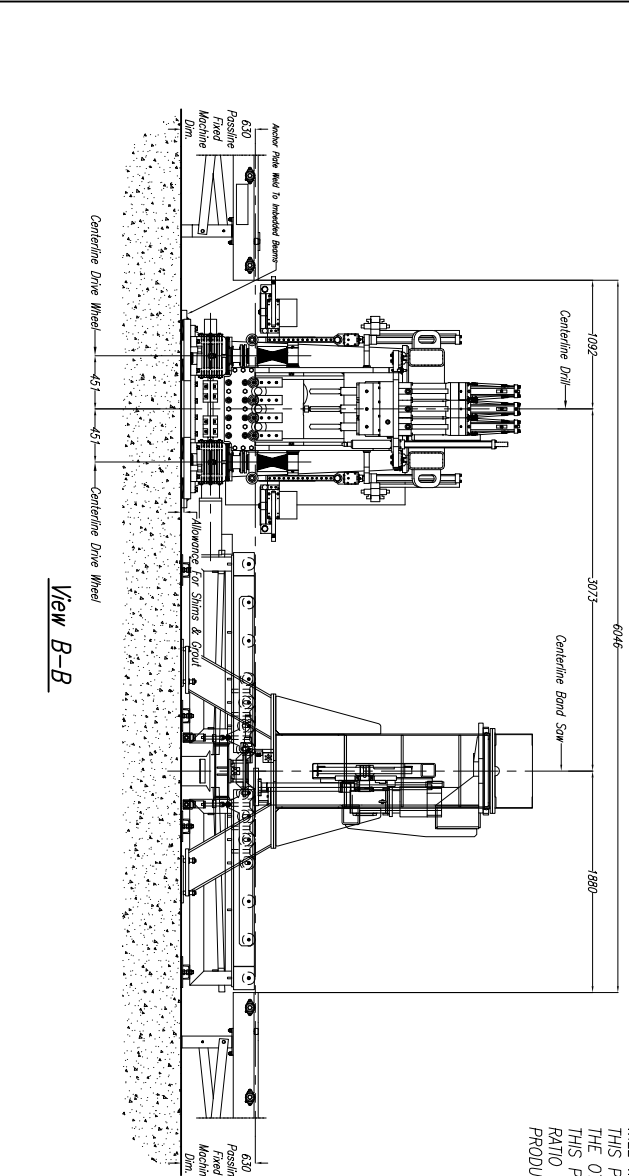
Peddinghaus Corp.

BRADLEY, ILL. U.S.A.

BDL 1250 Drill 9 Spindle
 & 1270-610 Miter Band Saw
 for

IMPORTANT Safety Note!
 Because of the difficulty to effectively guard the full length of the system it is the customers responsibility to prevent access by unauthorized personnel and to provide safe crossing.
 DRAWN BY: *B. Marten* SCALE: 1 : 30 DATE:
 DRWG. NO. LET.

| LET. | REVISION/C.N.# | BY | DATE |
|------|----------------|----|------|
| E | | | |
| D | | | |
| C | | | |
| B | | | |
| A | | | |



View B-B