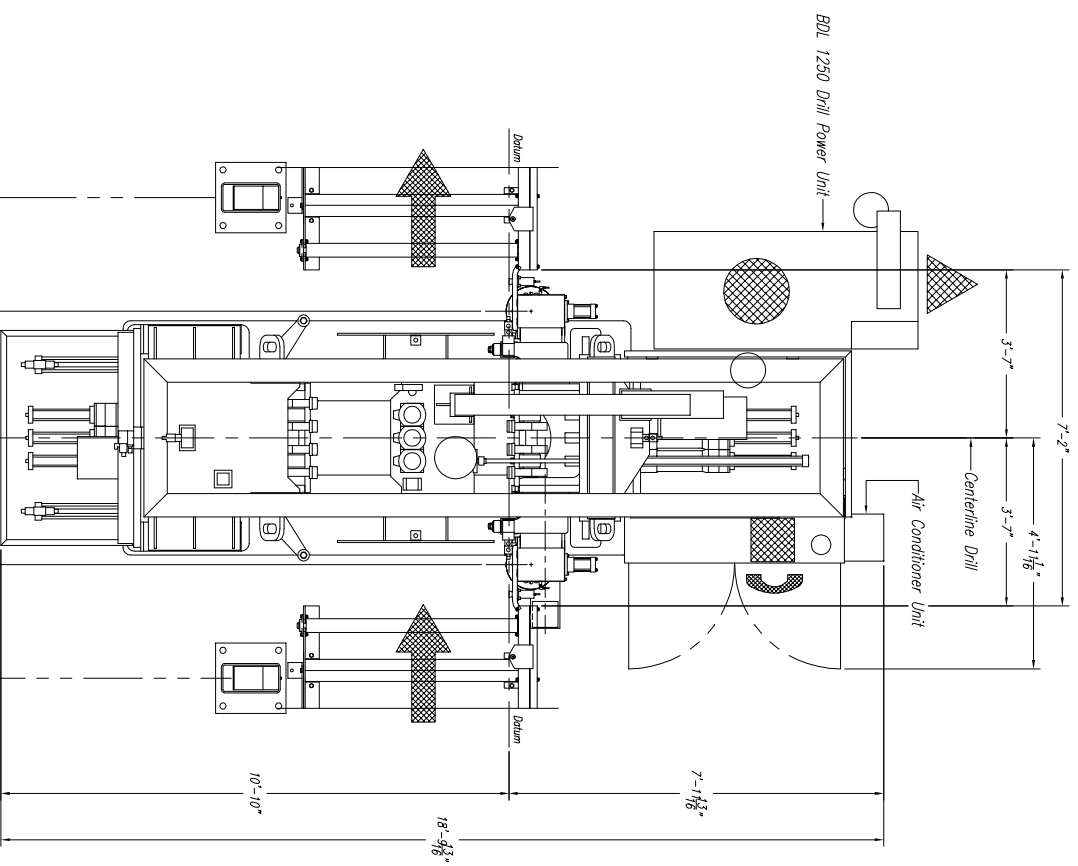
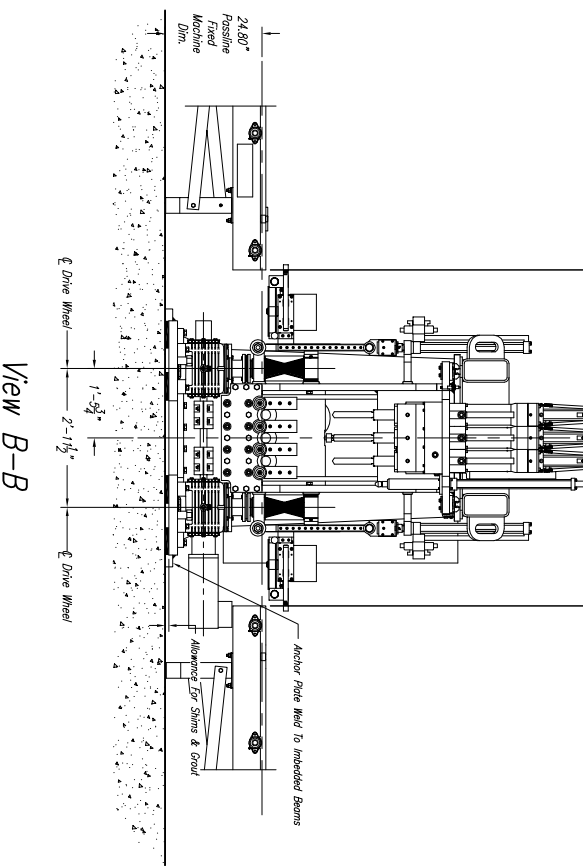
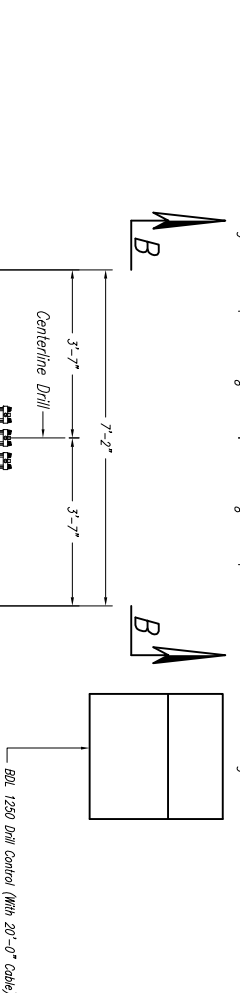


**CUSTOMER NOTE!!!!**  
 BDL 1250 Drill is Manufactured  
 At A 24.8" Passline And  
 Requires A **CUSTOMER SUPPLIED**  
 Pit Or Platform To Achieve Any  
 Other Passline Requested.

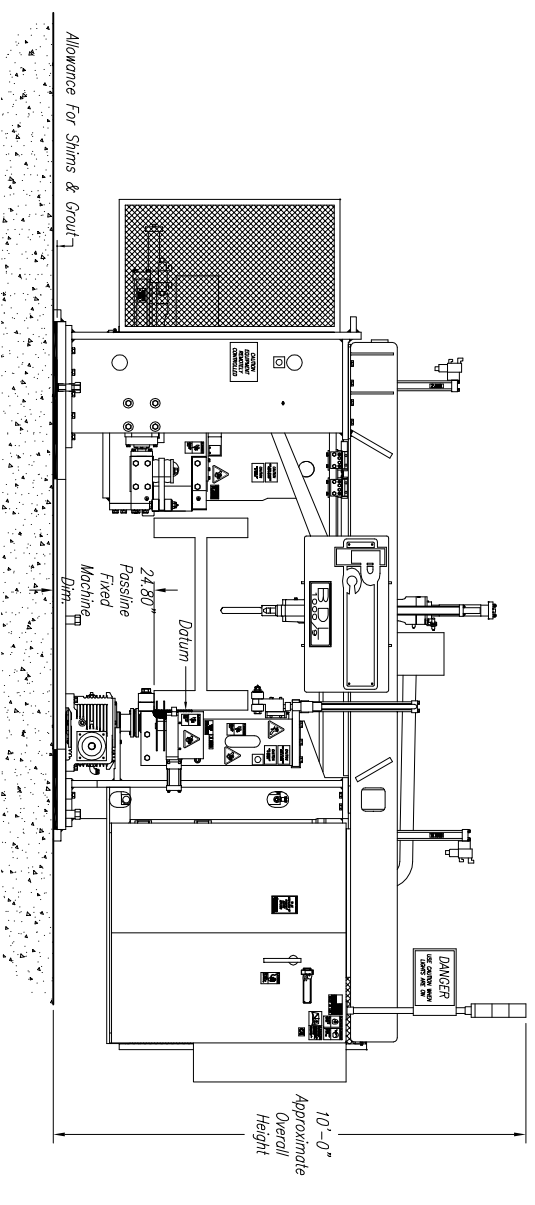


**Approximate Machine Weight**

BDL 1250 – 26,800 lbs



**DRILL SPINDLE GEARBOX LUBRICANT:**  
 FILL ALL THREE (3) DRILL SPINDLE GEARBOX UNITS  
 WITH "MOBIL GEAR #600 XP 68" GEAR BOX OIL OR EQUIVALENT!  
 (THIS OIL IS SPECIFICALLY FOR SPUR GEARS IN THIS APPLICATION)  
**DRILL COOLANT RECOMMENDATION:**  
 USE TRI CHEM "KLEAR KUT" HEAVY DUTY COOLANT (THIS  
 WILL WORK WITH ANY VARIANCE OF WATER HARDNESS.)  
 THIS PRODUCT MUST BE ADDED TO THE WATER, NOT  
 THE OTHER WAY AROUND (DO NOT ADD WATER TO  
 THIS PRODUCT!) USE APPROX 1:30 PRODUCT TO WATER  
 RATIO FOR STANDARD DUTY APPLICATIONS TO APPROX. 1:10  
 PRODUCT TO WATER RATIO FOR HEAVY DUTY APPLICATIONS.



**View A-A**  
**(RIGHT SIDE VIEW)**

**BDL 1250 DRILL NOTES:**

- 1) Passline of Equipment Based on 24.8" from Floorline
- 2) Concrete Under Equipment/Beams & Pits to be a Minimum of 6" Thick
- 3) Primary 460 V.. 3 Ph.. 60 Hz. [Req'd @ each ]
- 4) Total K.V.A. for Equipment = 15 HP 87 K.V.A. (110 Amps)
- 5) Air Requirement With Out Signoscript: 80 PSIG. 30 SCFM Min. Free Air [Req'd @ each ]  
 Air Requirement With Signoscript: 80 PSIG. 50 SCFM Min. Free Air [Req'd @ each ]
- 6) Hydraulic Oil (Mobil DTE #24 Or Equal) [Req'd @ Each ] 1120 Gal. Total
- 7) Anchor Bolts (Control Stand) 1/2" ITW Red Head WS-1270 Or Equal [4 Req'd]
- 8) Anchor Bolts (Machine & Safety Stands 3/4" ITW Red Head WS-3470 Or Equal [28 Req'd]
- 9) Network/Internet Connection for Data Transfer and Remote Diagnostics [Req'd @ Each ]

E									
D									
C									
B									
A									
LET.									

**Peddinghaus Corp.**  
 BRADLEY, ILL. U.S.A.  
 BDL 1250 Drill 9 Spindle  
 For  
**B. Martin**  
 SCALE: 1/2" = 1'  
 DATE:

IMPORTANT Safety Note!  
 Because of the difficulty to effectively guard the full length of the system, it is the customer's responsibility to prevent access by unauthorized personnel and to provide safe crossing.

THIS PRINT IS THE PROPERTY OF PEDDINGHAUS CORP. AND IS NOT TO BE USED IN ANY MANNER DETRIMENTAL TO THE INTERESTS OF SAID COMPANY