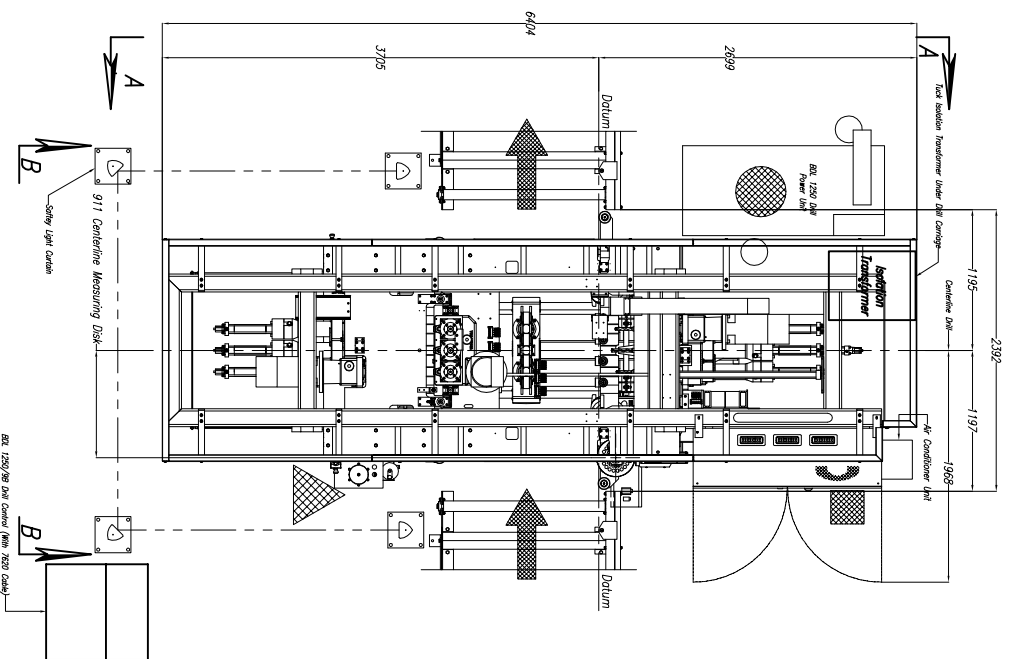
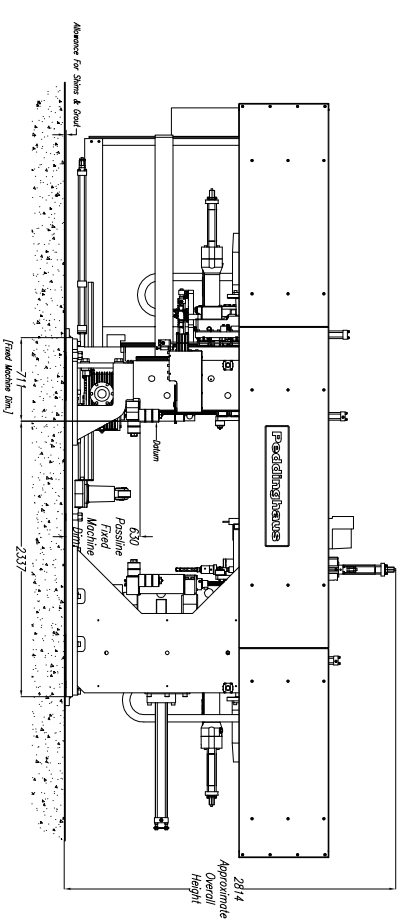


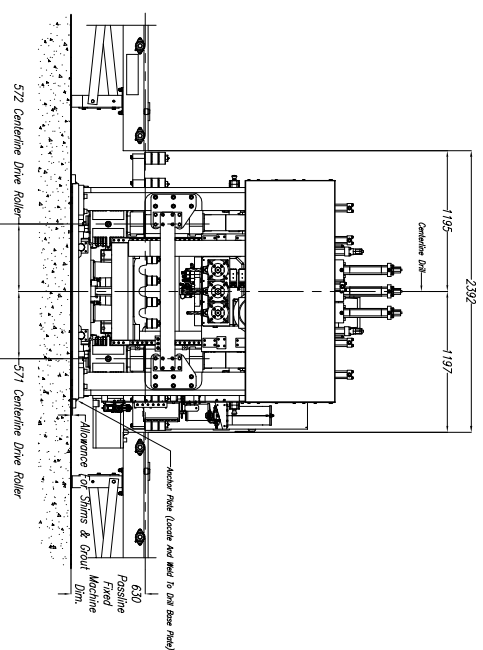
CUSTOMER NOTE!!!!
BDL 1250 Drill is Manufactured At A 630mm Passline And Requires A CUSTOMER SUPPLIED Pit Or Platform To Achieve Any Other Passline Requested.



Approximate Machine Weight
BDL 1250 D – 14,515 kg



Section A-A



Section B-B

BDL 1250/9D Drill Notes:

- 1.) Passline of Equipment Based on 630mm from Floorline
- 2.) Concrete Under Equipment, Beams, & Pits to be a Minimum of 200mm Thick
- 3.) Primary 400 V., 3 Ph., 50 Hz. [Req'd @ each]
- 4.) Total kW for Equipment = 77 kW (138 Amps)
- 5.) Air Requirement (Standard Material): 6,205 bar, 1.13 SCMM Min. Free Air [Req'd @ each]
- 6.) Air Requirement (55mm Or Greater Material Thickness): 6,205 bar, 1.7 SCMM Min. Free Air [Req'd @ each]
- 7.) Hydraulic Oil (Mobil DTE #24 or Equal) [Req'd @ Each] {303 L Total}
- 8.) Anchor Bolts (Control Stand) 12mm Anchor Bolt or Equal [4 Req'd]
- 9.) Anchor Bolts (Machine & Safety Stands) 20mm Anchor Bolt or Equal [28 Req'd]
- 10.) Network/Internet Connection for Data Transfer and Remote Diagnostics [Req'd @ Each]

DRILL COOLANT RECOMMENDATION:
 See Manual For Coolant Recommendations

DRILL SPINDLE GEARBOX LUBRICANT:
 See Manual For Lubricant Recommendations

E									
D									
C									
B									
A									
LET.									

Peddinghaus Corp.
 BRADLEY, ILL. U.S.A.

BDL 1250/9D Drill
 For

DRAWN BY: **J. Martin**
 SCALE: 1/2" = 1'
 DATE: _____
 DRWG. NO. _____

IMPORTANT Safety Note:
 Because of the difficulty to effectively guard the full length of the system, it is the customer's responsibility to prevent access by unauthorized personnel and to provide safe crossing.

THIS PRINT IS THE PROPERTY OF PEDDINGHAUS CORP. AND IS NOT TO BE USED IN ANY MANNER DETRIMENTAL TO THE INTERESTS OF SAID COMPANY