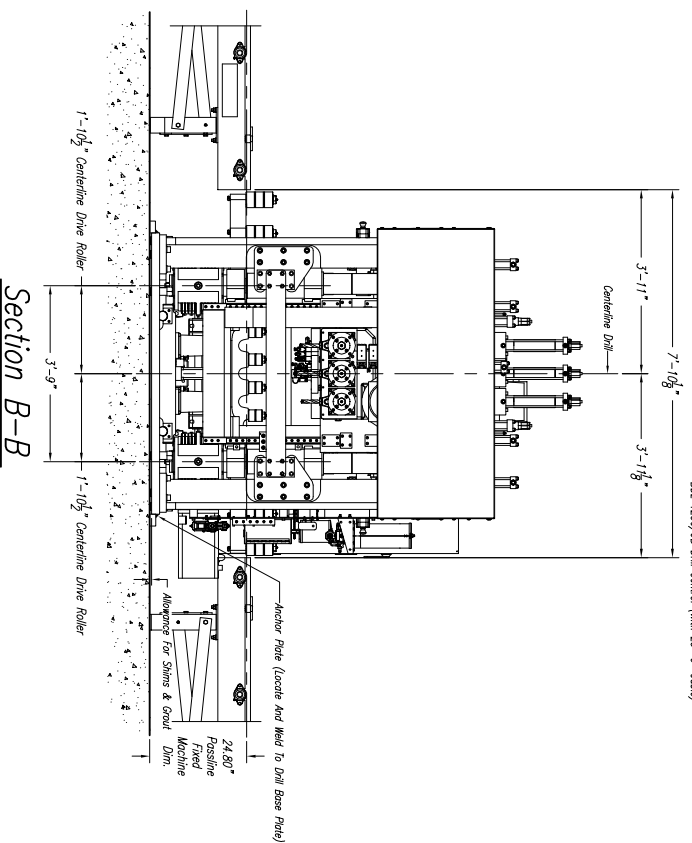
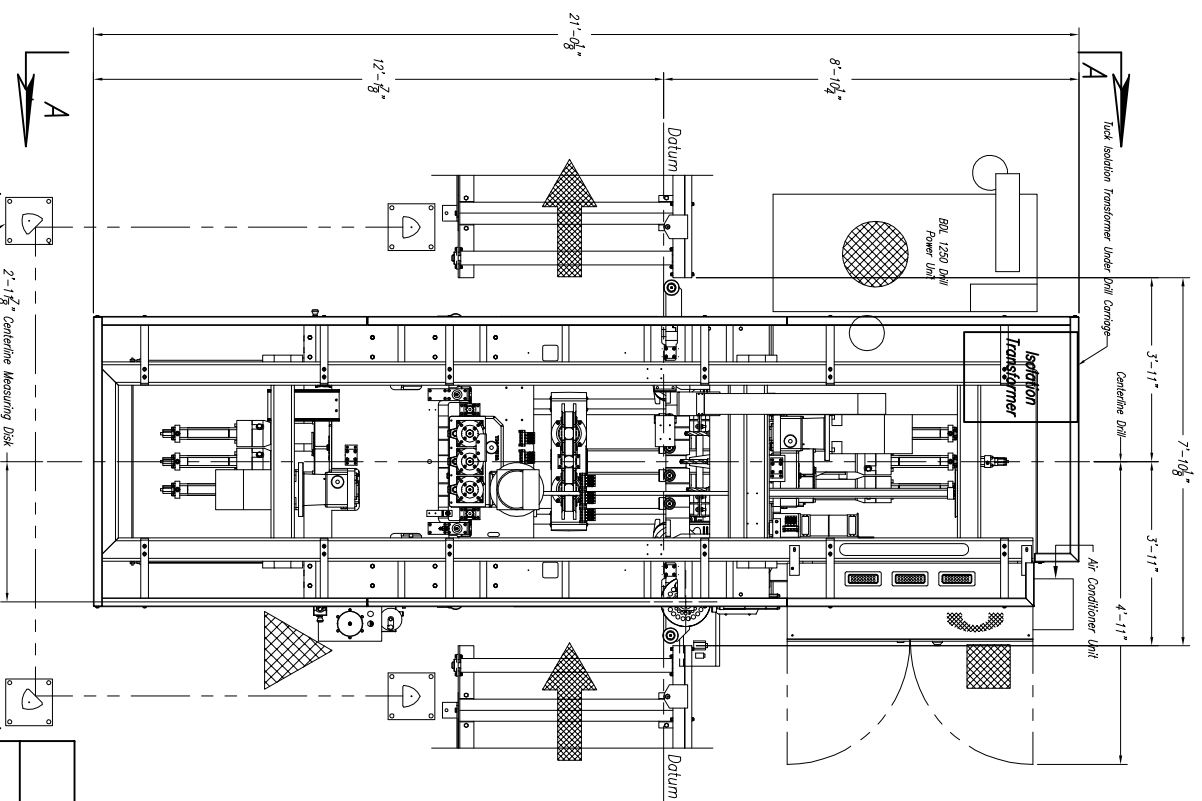
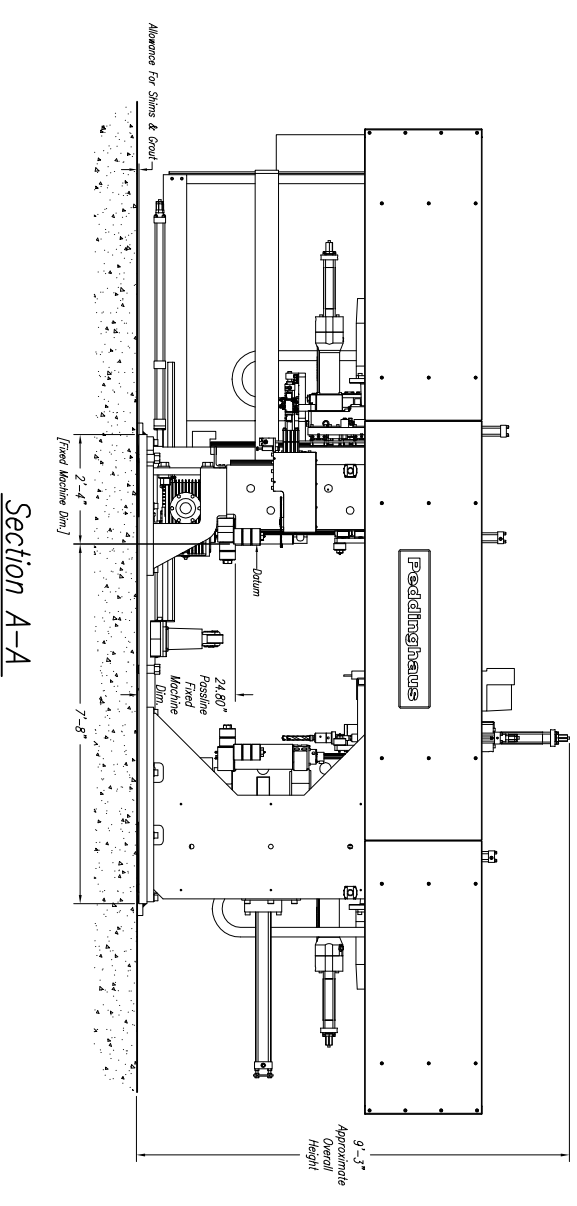


CUSTOMER NOTE!!!!
 BDL 1250 Drill is Manufactured
 At A 24.8" Passline And
 Requires A CUSTOMER SUPPLIED
 Pit Or Platform To Achieve Any
 Other Passline Requested.



Approximate Machine Weight
 BDL 1250/9D – 32,000 lb



BDL 1250/9D Drill Notes:

- 1.) Passline of Equipment Based on 24.8" from Floorline
- 2.) Concrete Under Equipment, Beams, & Pits to be a Minimum of 6" Thick
- 3.) Primary 460 V., 3 Ph., 60 Hz. [Req'd @ each]
- 4.) Total K.V.A. for Equipment = 91 K.V.A. (114 Amps)
- 5.) Air Requirement (Standard Material): 90 PSIG, 40 SCFM Min. Free Air [Req'd @ each]
- 6.) Air Requirement (3" Or Greater Material Thickness):
90 PSIG, 60 SCFM Min. Free Air [Req'd @ each]
- 7.) Hydraulic Oil (Mobil DTE #24 or Equal) [Req'd @ Each] {80 Gal. Total}
- 8.) Anchor Bolts (Control Stand) 1/2" ITW Red Head WS-1270 or Equal [4 Req'd]
- 9.) Anchor Bolts (Machine & Safety Stands) 3/4" ITW Red Head WS-3470 or Equal [28 Req'd]
- 10.) Network/Internet Connection for Data Transfer and Remote Diagnostics [Req'd @ Each]

DRILL COOLANT RECOMMENDATION:
 See Manual For Coolant Recommendations
DRILL SPINDLE GEARBOX LUBRICANT:
 See Manual For Lubricant Recommendations

E					Peddinghaus Corp. BRADLEY, ILL. U.S.A. BDL 1250/9D Drill For	IMPORTANT Safety Note! Because of the difficulty to effectively guard the full length of the system it is the customers responsibility to prevent access by unauthorized personnel and to provide safe crossing.
D						
C						
B						
A						
LET.	REVISION/C.N.#	BY	DATE	THIS PRINT IS THE PROPERTY OF PEDDINGHAUS CORP. AND IS NOT TO BE USED IN ANY MANNER DETRIMENTAL TO THE INTERESTS OF SAID COMPANY	DRAWN BY: <i>J.B. Martin</i>	SCALE: 1/2" = 1' DATE:

Section B-B

Section A-A