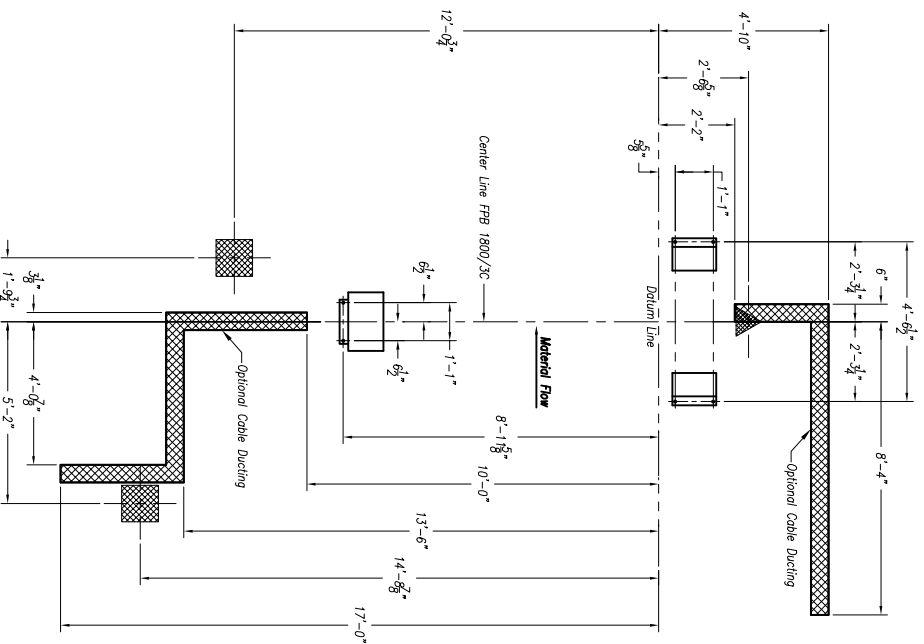
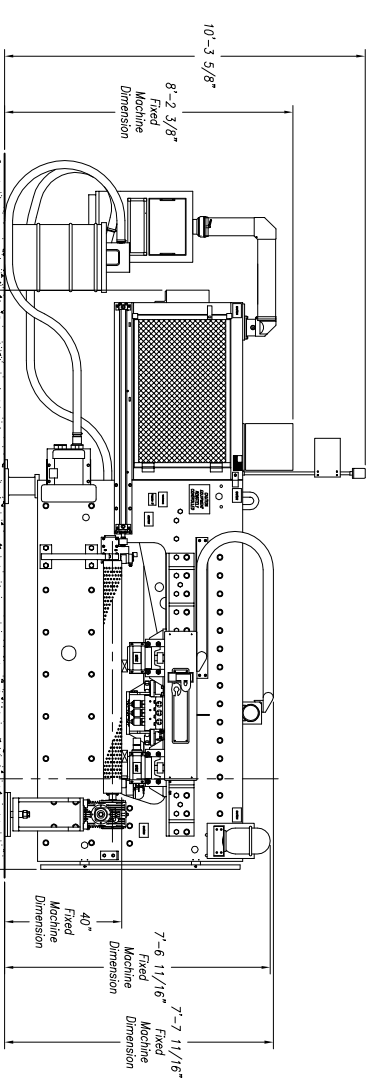
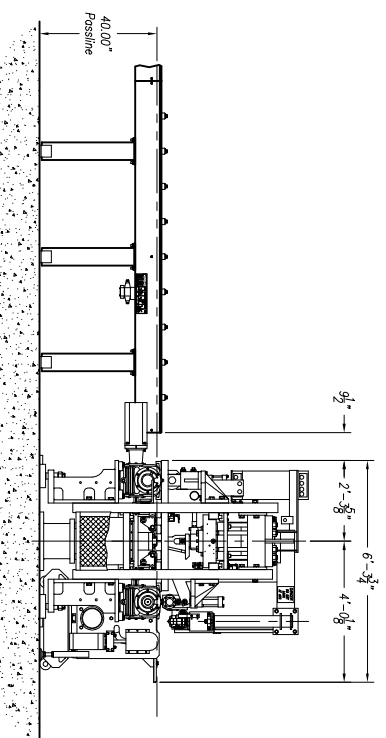


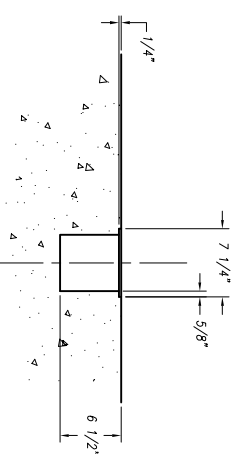
Anchor Bolt & Cable Ducting Layout



!!!NOTE: DO NOT DRILL HOLES FOR ANCHOR PLATES UNTIL MACHINE IS IN PLACE AND LEVEL AT FINAL INSTALLATION!!!



MACHINE WEIGHT 33,000 lbs.



CUSTOMER TO SUPPLY COVER: 1/4" THK. X 7 1/4" WIDE
INSTALLED AFTER FINAL FIELD WIRING & PIPING

GENERAL NOTES:

- 1) Passline of FPB 1800/3C Based on 40" from Floor-Line
- 2) Concrete Floor under FPB to be a Minimum of 6" Thick
- 3) Total K.V.A. for FPB 1800/3C = 65 K.V.A. (Machine Only) (81 Amps)
Total K.V.A. for HPR 260XD Plasma Unit = 52 K.V.A. (64 Amps)
- 4) Primary 460 V., 3 Ph., 60 Hz., [Req'd @]
- 5) Air Requirements: 90 PSIG, 12 SCFM (With Signoscript Option)
Air Requirements: 90 PSIG, 50 SCFM (Machine Only)
- 6) Torit Dust Collector Air Requirements: 90/100 PSIG, 10 SCFM [Req'd @]
- 7) 120 Gal. Hydraulic Oil (Mobil DTE #24 or Equal) [Req'd @]
- 8) Anchor Bolts: (Machine & Safety Stands) 3/4" ITW Red Head WS-3470 or Equal [30 Req'd]
- 9) Transfer Module: (Conveyors) 1/2" ITW Red Head WS-1270 or Equal [12 Req'd]
- 10) Network/Internet Connection for Data Transfer and Remote Diagnostics [Req'd @]
- 11) See HPR 260XD Notes for Plasma Requirements

GAS REQUIREMENTS: HPR 260XD

(Req'd @ Each)
The Following Requirements Are Recommended For Cutting Mild Steel.
PLASMA GAS TYPES:
OXYGEN (O2)
ARGON (Ar)
GAS QUALITY:
O2 99.5% PURE, Clean, Dry, Oil-Free (LIQUID GAS RECOMMENDED)
Ar & N2 99.99% PURE, Clean, Dry, Oil-Free (LIQUID GAS RECOMMENDED)
AIR Clean, Dry, Oil-Free
REQUIRED FLOW RATES & INLET PRESSURES
OXYGEN 115 psi AT 150 scfh
NITROGEN 115 psi AT 410 scfh
ARGON 115 psi AT 150 scfh
AIR 115 psi AT 400 scfh

Peddinghaus Corp.		IMPORTANT Safety Note	
BRADLEY, ILL. U.S.A.		Because of the difficulty to effectively guard the full length of the system it is the customer's responsibility to prevent access by unauthorized personnel and to provide safe crossing.	
FPB 1800/3C CNC Plate Punch		DRAWN BY:	SCALE: 3/8" = 1' DATE:
With Plasma Cutting		for	
A		G. Marston	
REVISON/C.N.#		BY DATE	
LET		THIS PRINT IS THE PROPERTY OF PEDDINGHAUS CORP. AND IS NOT TO BE USED IN ANY MANNER DETRIMENTAL TO THE INTERESTS OF SAID COMPANY.	
FDB 1800/3C		DRAWING NO.	

Note: Customer To Determine Cable Ducting Arrangement For Main Power & Air Supplies