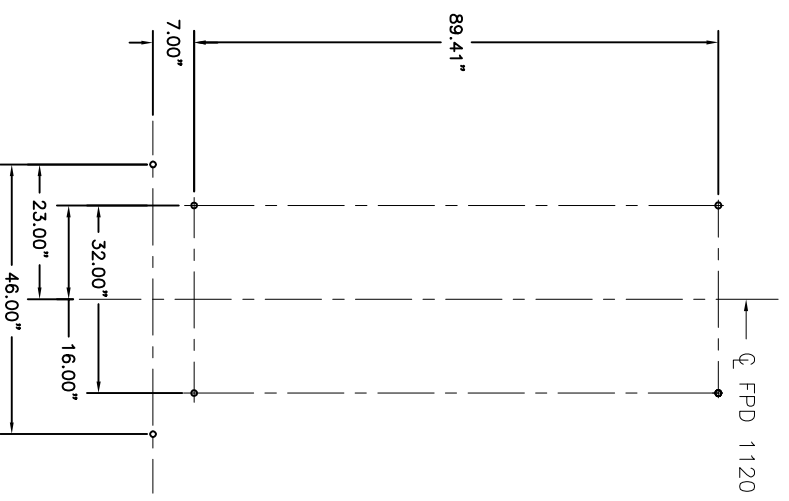
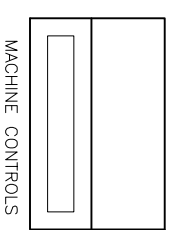
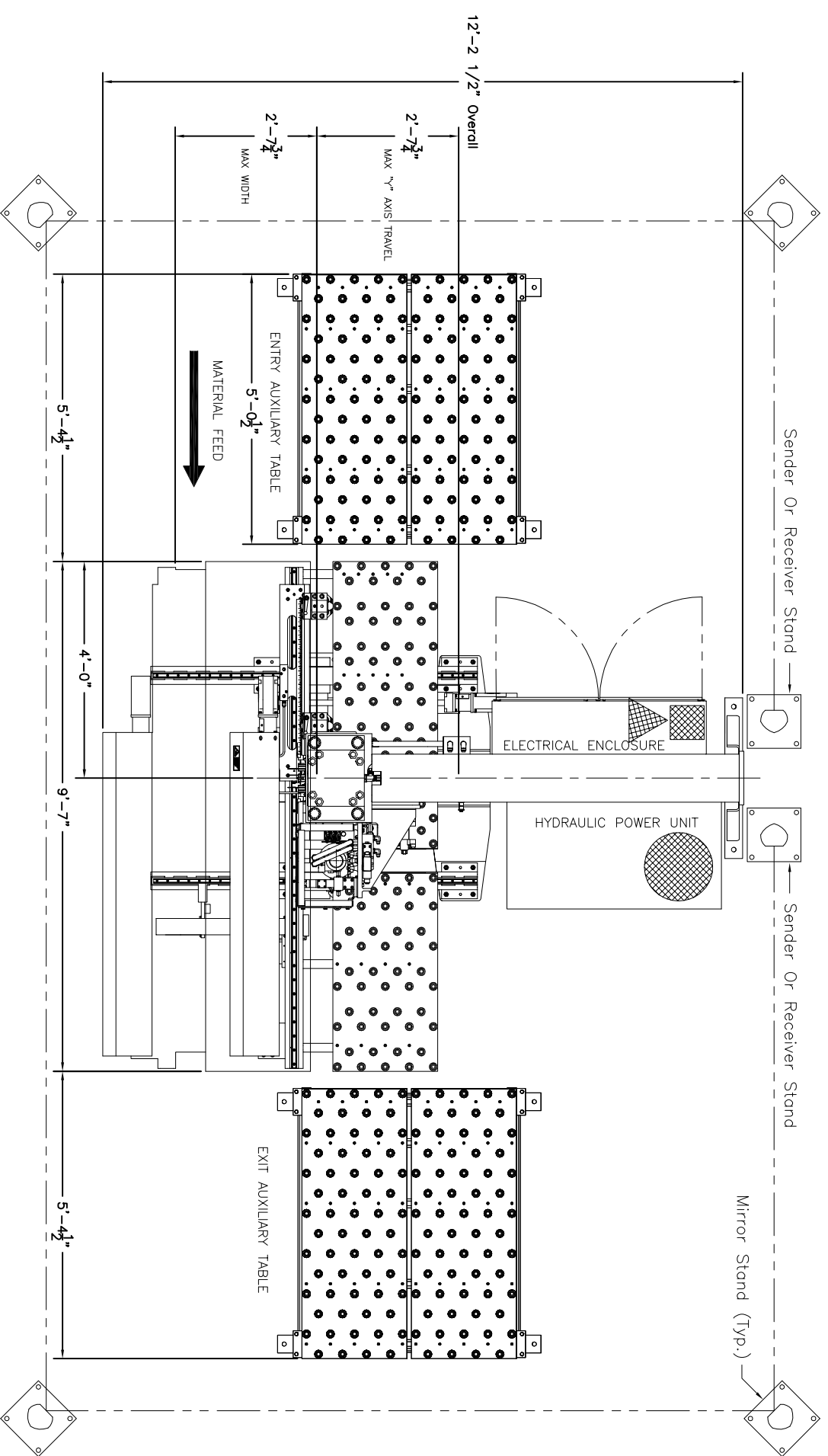


!!!NOTE: DO NOT DRILL HOLES FOR ANCHOR PLATES UNTIL MACHINE IS IN PLACE AND LEVEL AT FINAL INSTALLATION!!!



STUD LAYOUT FOR FPD 1120

SHOWN ABOVE IS THE PATTERN OF 1.06" DIA. HOLES LOCATED ON THE (6) SIX "FEET" OF THE FPD 1120



1. PASSLINE OF EQUIPMENT BASED ON 40" FROM FLOOR LINE
 2. CONCRETE UNDER SYSTEM TO BE MINIMUM 6" THICK
 3. PRIMARY 460 V., 3 PH., 60 HZ., {REQ'D @ [hatched pattern]}
 4. 80 GAL. MOBIL DTE #24 HYD. OIL OR EQUAL {REQ'D @ [hatched pattern]}
 5. TOTAL K.V.A. FOR EQUIPMENT = 37 K.V.A. [58 Amps]
 6. AIR REQUIREMENT: 80 P.S.I., 50 C.F.M. MIN. FREE AIR {REQ'D @ [hatched pattern]}
- Approximate Machine Weight 13,500 lbs. (Without Auxiliary Tables)

E					
D					
C					
B					
A					
LET					

Peddinghaus Corp.		IMPORTANT Safety Note	
BRADLEY, ILL. U.S.A.		Because of the difficulty to effectively guard the full length of the system it is the customer's responsibility to prevent access by unauthorized personnel and to provide safe crossing.	
FPD 1120		SCALE: 3/4" = 1'	DATE:
For		DRWN BY: <i>J. Alvarado</i>	DRWG. NO.:
REVISION/C.N.#	BY	DATE	THIS PRINT IS THE PROPERTY OF PEDDINGHAUS CORP. AND IS NOT TO BE USED IN ANY MANNER DETRIMENTAL TO THE INTERESTS OF SAID COMPANY