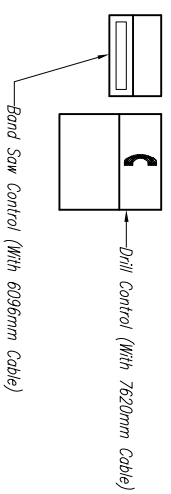
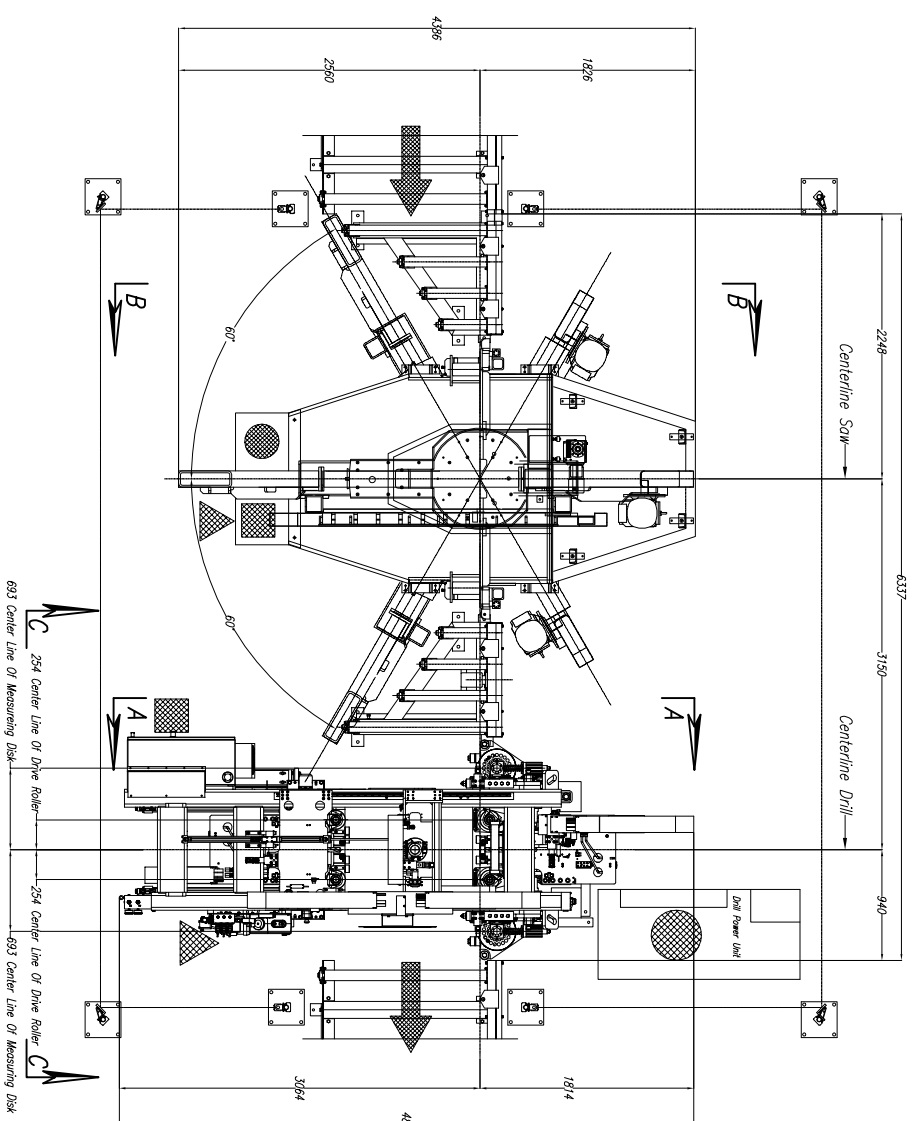
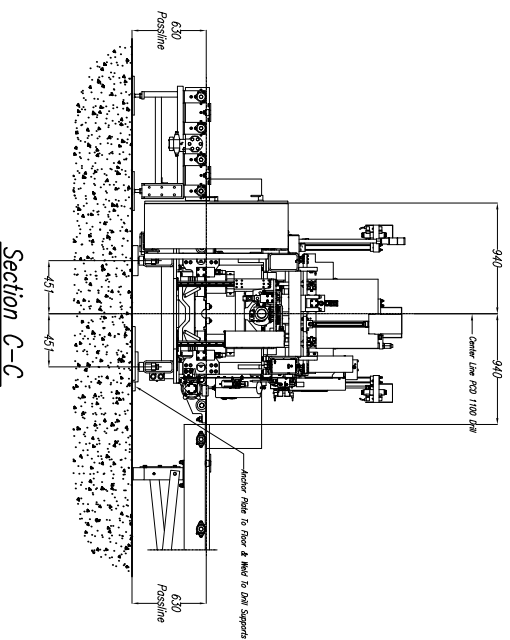


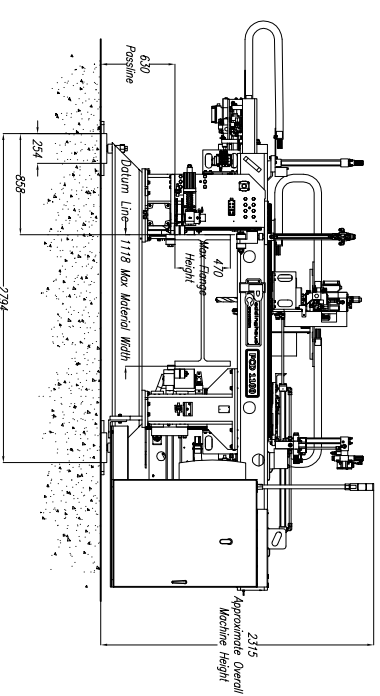
**CUSTOMER NOTE!!!!**  
 This Saw Is Manufactured At A 630mm Passline And Requires A CUSTOMER SUPPLIED Pit Or Platform To Achieve Any Other Passline Requested.



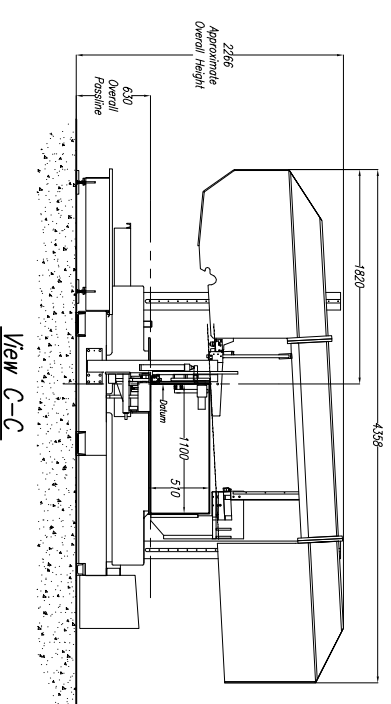
**Approximate Machine Weights**  
 PCD 1100 – 4,763 kg  
 1100 DG – 5,590kg



Section C-C



Section A-A  
 (LEFT SIDE VIEW)



View C-C

**1100-510 Saw NOTES:**

- 1.) Passline of Equipment Based on 630mm from Floorline
- 2.) Concrete Under Equipment/Beams & Pits to be a Minimum of 200mm Thick
- 3.) Primary 400 V., 3 Ph., 50 Hz. [Req'd @ each ]
- 4.) Total KW for Equipment = 17.6 kW (27 Amps)
- 5.) Air Requirement With Out Signoscript: 6.205 bar, 0.057 SCMM Min. Free Air [Req'd @ each ]
- 6.) Hydraulic Oil (Mobil DTE #24 Or Equal) [Req'd @ Each ] 13 L. Total
- 7.) Anchor Bolts (Control Stand) 12mm Anchor Bolt Or Equal [7 Req'd]
- 8.) Anchor Bolts (Mitered Conveyors) 16mm Anchor Bolt Or Equal [16 Req'd]
- 9.) Anchor Bolts (Machine & Safety Stands) 20mm Anchor Bolt Or Equal [24 Req'd]

**PCD 1100/3 Drill NOTES:**

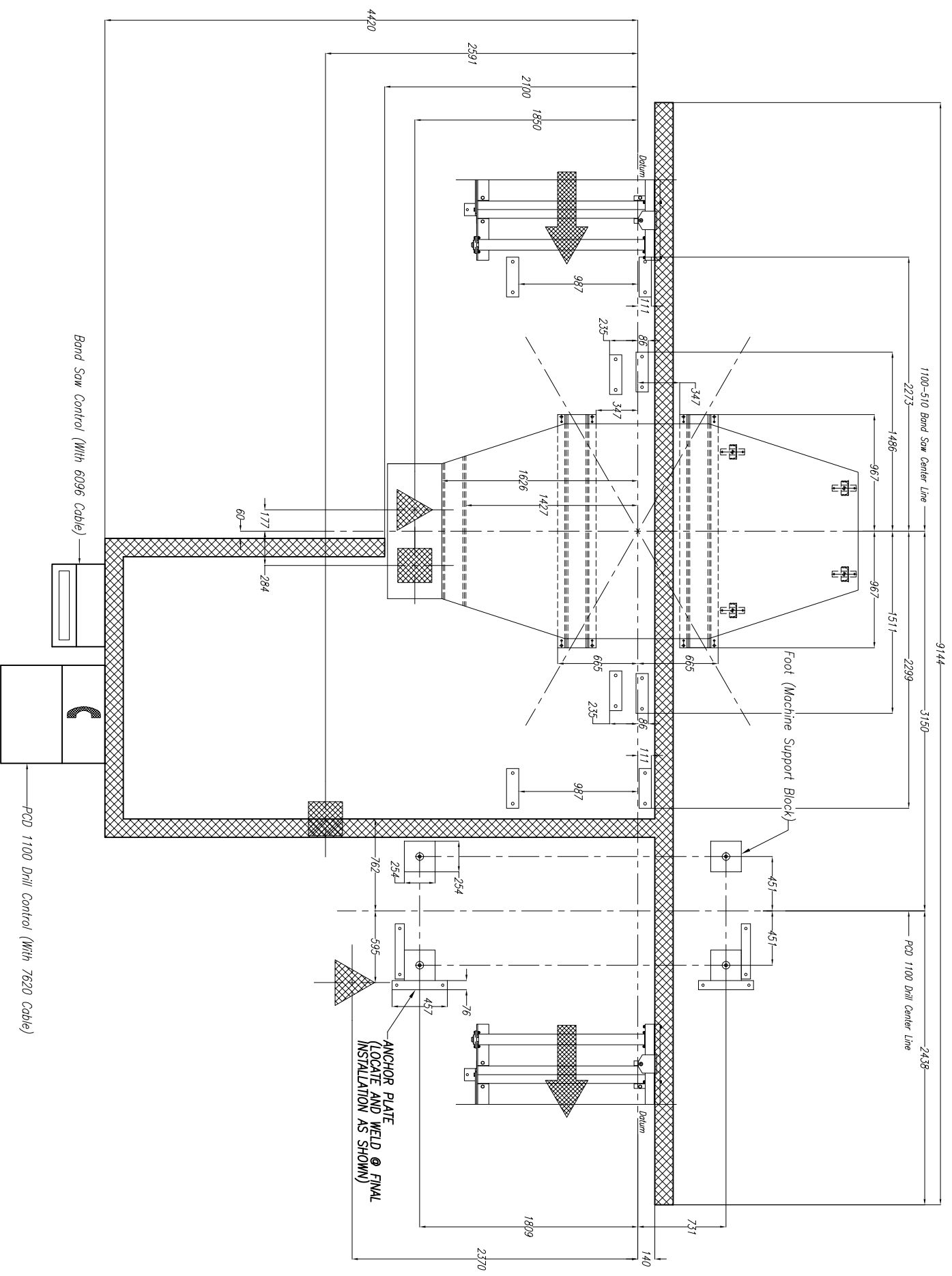
- 1.) Passline of Equipment Based on 630mm from Floorline
- 2.) Concrete Under System to be a Minimum of 200mm Thick
- 3.) Primary 400 V., 3 Ph., 50 Hz. [Req'd @ each ]
- 4.) Total KW for Equipment = 81.6 kW (138 Amps)
- 5.) Air Requirement With Out Signoscript: 5.52 bar, 1.42 SCMM Min. Free Air [Req'd @ each ]
- 6.) Air Requirement With Signoscript: 5.52 bar, 0.85 SCMM Min. Free Air [Req'd @ each ]
- 7.) Hydraulic Oil (Mobil DTE #24 or Equal) [Req'd @ Each ] 1454 L. Total
- 8.) Anchor Bolts (Control Stand) 12mm Anchor Bolts or Equal [4 Req'd]
- 9.) Anchor Bolts (Machine & Safety Stands) 20mm Anchor Bolt or Equal [24 Req'd]
- 9.) Network/Internet Connection for Data Transfer and Remote Diagnostics [Req'd @ Each ]

**SAW COOLANT RECOMMENDATION:**  
 USE PEDDINGHAUS FEED/COOL/VEGETABLE BASE COOLANT  
 THIS PRODUCT IS FOR MIST COOLANT SYSTEMS  
 DO NOT MIX THIS COOLANT WITH WATER

**DRILL COOLANT RECOMMENDATION:**  
 SEE MACHINE MANUAL FOR DRILL COOLANT RECOMMENDATIONS

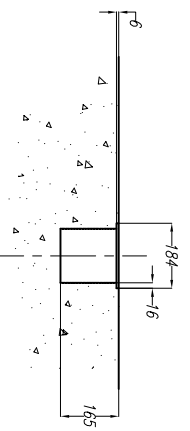
E									
D									
C									
B									
A									
LET	REVISION/C.N.#	BY	DATE	THIS PRINT IS THE PROPERTY OF PEDDINGHAUS CORP. AND IS NOT TO BE USED IN ANY MANNER DETRIMENTAL TO THE INTERESTS OF SAID COMPANY.					
				<b>Peddinghaus Corp.</b> BRADLEY, ILL. U.S.A. PCD 1100/3B Drill & 1100-510 Miter Bond Saw FOR			IMPORTANT Safety Note Because of the difficulty to effectively guard the rotating parts of the system, the customers are responsible for the safety of the system and to provide safe crossing. DRAWN BY: <b>S. Macklin</b> SCALE: 1 : 30 DATE: DRWG. NO.		

**!!!NOTE DO NOT DRILL HOLES FOR ANCHOR PLATES UNTIL MACHINE IS IN PLACE AND LEVEL AT FINAL INSTALLATION!!!**



Note: Customer To Determine Cable Ducting Arrangement For Main Power & Air Supplies  
C 25/38 x 200mm THICK CONCRETE RECOMMENDED UNDER ALL EQUIPMENT

**CABLE DUCT DETAIL**



CUSTOMER TO SUPPLY COVER: 6mm THK. X 184mm WIDE  
 INSTALLED AFTER FINAL FIELD WIRING & PIPING

REVISION/CN.#	BY	DATE	THIS PRINT IS THE PROPERTY OF PEDDINGHAUS CORP. AND IS NOT TO BE LOANED, REPRODUCED, COPIED, OR IN ANY MANNER DISTRIBUTED TO THE ADDRESS OF SAID COMPANY.
E			
D			
C			
B			
A			
LET			

**Peddinghaus Corp.**  
 BRADLEY, ILL. U.S.A.  
 PCD 1100 Drill 3 Spindle  
 With 1100-510 Miter Band Saw  
 For  
**J. Alarkin** DRWG. NO.

**IMPORTANT Safety Note!**  
 Peddinghaus Corp. is not responsible for any accidents or injuries caused by the use of this equipment. The user must read and understand the instructions and safety warnings before operating the equipment. Peddinghaus Corp. is not responsible for any accidents or injuries caused by the use of this equipment. The user must read and understand the instructions and safety warnings before operating the equipment.