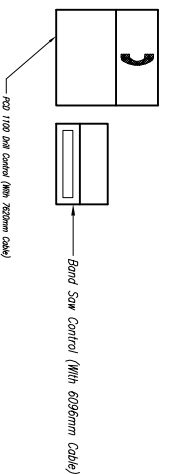
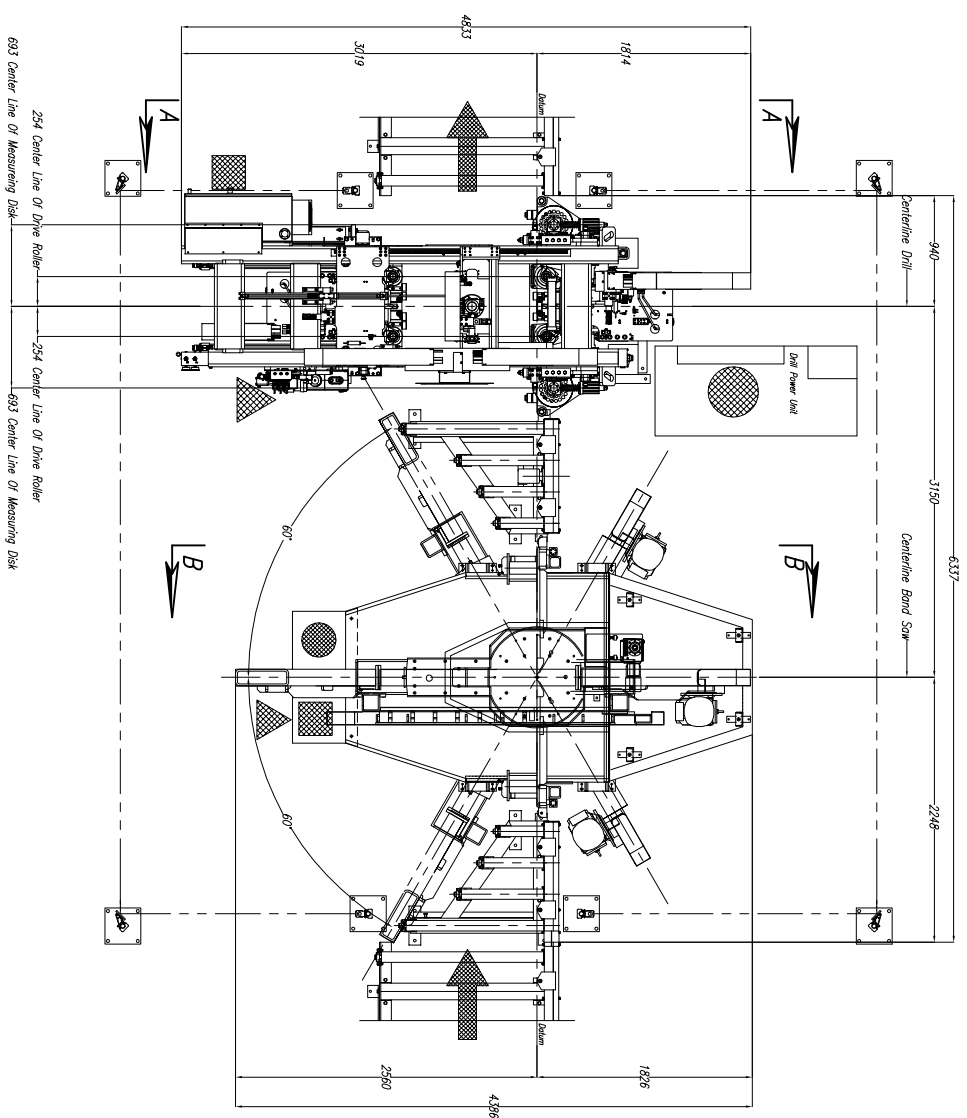
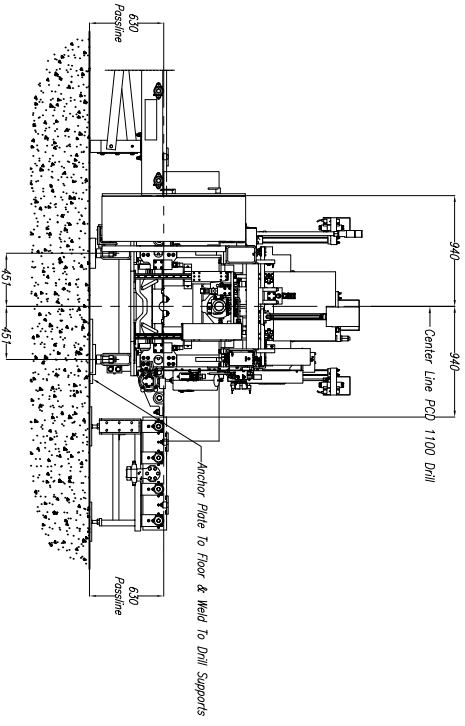


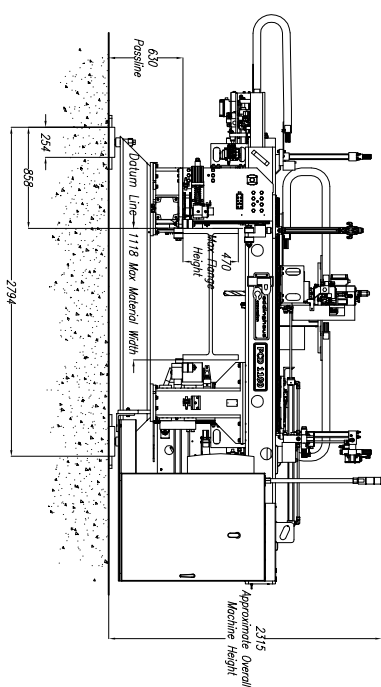
CUSTOMER NOTE!!!!
 This Saw Is Manufactured
 At A 630mm Passline And
 Requires A CUSTOMER SUPPLIED
 Pit Or Platform To Achieve Any
 Other Passline Requested.



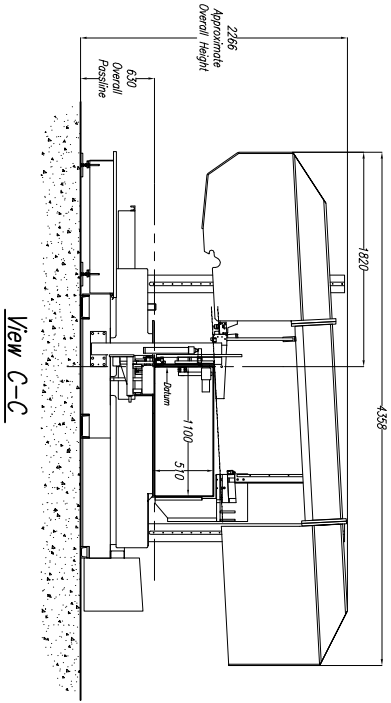
Approximate Machine Weights
 PCD 1100 – 4,763 kg
 1100 DG – 5,590kg



Section B-B



**Section A-A
 (LEFT SIDE VIEW)**



1100-510 Saw NOTES:

- 1.) Passline of Equipment Based on 630mm from Floorline
 - 2.) Concrete Under Equipment/Beams & Pits to be a Minimum of 200mm Thick
 - 3.) Primary 400 V., 3 Ph., 50 Hz. [Req'd @ each]
 - 4.) Total KW for Equipment = 17.6 kW (27 Amps)
 - 5.) Air Requirement With Out Signoscript: 6.205 bar, 0.057 SCMM Min. Free Air [Req'd @ each]
 - 6.) Hydraulic Oil (Mobil DTE #24 Or Equal) [Req'd @ Each] 13 L. Total
 - 7.) Anchor Bolts (Control Stand) 12mm Anchor Bolt Or Equal [7 Req'd]
 - 8.) Anchor Bolts (Mitered Conveyors) 16mm Anchor Bolt Or Equal [16 Req'd]
 - 9.) Anchor Bolts (Machine & Safety Stands) 20mm Anchor Bolt Or Equal [24 Req'd]
- PCD 1100/3 Drill NOTES:**
- 1.) Passline of Equipment Based on 630mm from Floorline
 - 2.) Concrete Under System to be a Minimum of 200mm Thick
 - 3.) Primary 400 V., 3 Ph., 50 Hz. [Req'd @ each]
 - 4.) Total KW for Equipment = 81.6 kW (138 Amps)
 - 5.) Air Requirement With Out Signoscript: 5.52 bar, 1.42 SCMM Min. Free Air [Req'd @ each]
 - 6.) Air Requirement With Signoscript: 5.92 bar, 1.42 SCMM Min. Free Air [Req'd @ each]
 - 7.) Hydraulic Oil (Mobil DTE #24 or Equal) [Req'd @ Each] 1454 L. Total
 - 8.) Anchor Bolts (Control Stand) 12mm Anchor Bolts or Equal [4 Req'd]
 - 9.) Anchor Bolts (Machine & Safety Stands) 20mm Anchor Bolt or Equal [24 Req'd]
 - 9.) Network/Internet Connection for Data Transfer and Remote Diagnostics [Req'd @ Each]

SAW COOLANT RECOMMENDATION:
 USE PEDDINGHAUS "PEDDI COOL" VEGETABLE BASE COOLANT
 THIS PRODUCT IS FOR MIST COOLANT SYSTEMS
 DO NOT MIX THIS COOLANT WITH WATER

DRILL COOLANT RECOMMENDATION:
 SEE MANUAL FOR DRILL COOLANT RECOMMENDATIONS

E									
D									
C									
B									
A									
LET									

THIS PRINT IS THE PROPERTY OF PEDDINGHAUS CORP. AND IS NOT TO BE USED IN ANY MANNER DETRIMENTAL TO THE INTERESTS OF SAID COMPANY.

REVISION/C.N.#	BY	DATE	

Peddinghaus Corp.
 BRADLEY, ILL. U.S.A.

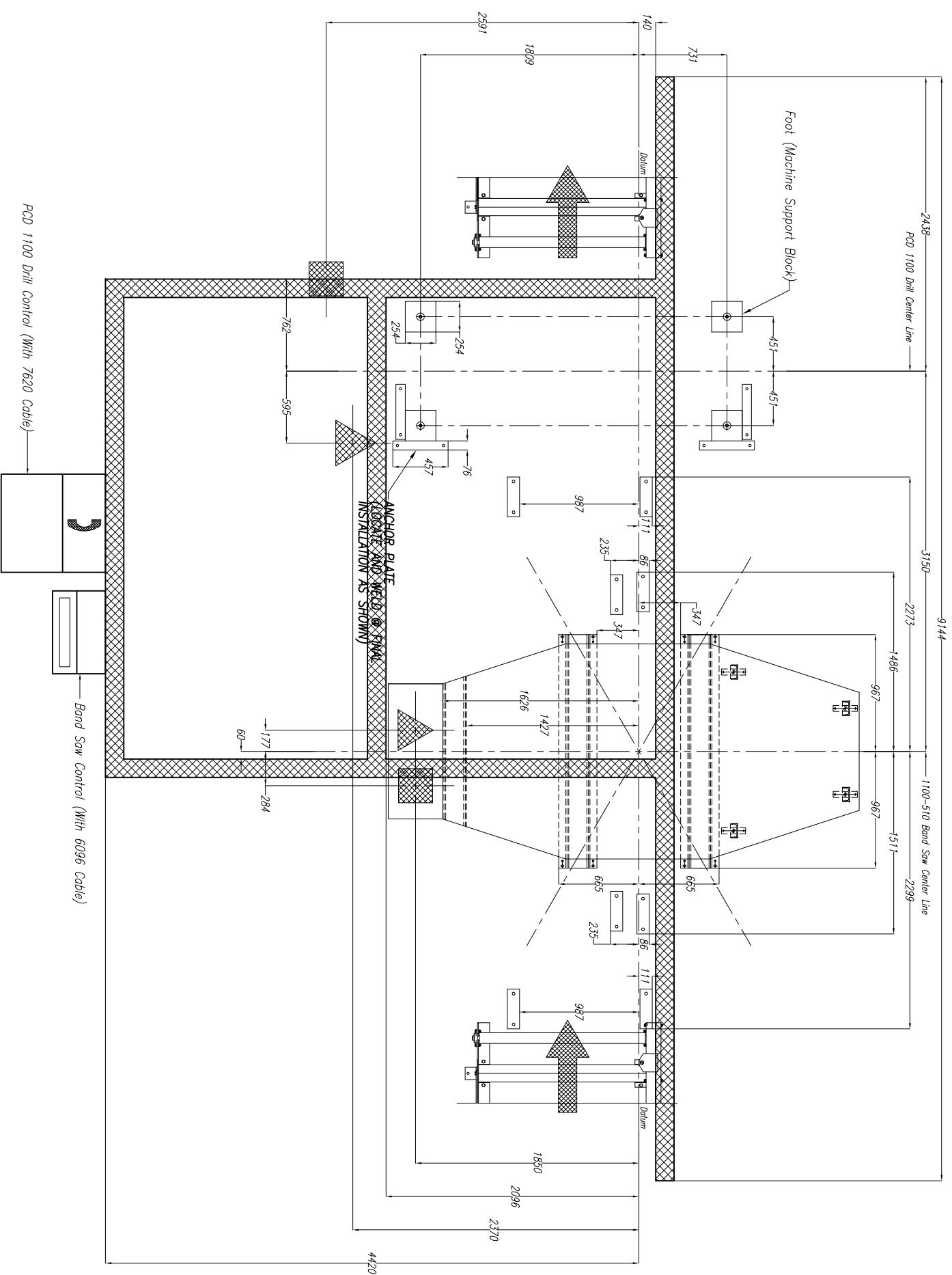
PCD 1100/3B Drill
 & 1100-510 Miter Band Saw
 FOR

J. Mankin DRAWG. NO.

IMPORTANT Safety Note:
 Because of the difficulty to effectively guard the full length of the system it is the customer's responsibility to ensure that the system is properly installed and to provide safe crossing.

SCALE: 1 : 30
 DATE:

!!!NOTE DO NOT DRILL HOLES FOR ANCHOR PLATES UNTIL MACHINE IS IN PLACE AND LEVEL AT FINAL INSTALLATION!!!



CABLE DUCT DETAIL

CUSTOMER TO SUPPLY COVER: 6mm THK. X 184mm WIDE
 INSTALLED AFTER FINAL FIELD WIRING & PIPING

C 25/38 x 200mm THICK CONCRETE RECOMMENDED UNDER ALL EQUIPMENT

REVISION/CN#	BY	DATE	DESCRIPTION
E			
D			
C			
B			
A			
LET			

Peddinghaus Corp.
 BRALEY, ILL. U.S.A.
 PCD 1100 Drill 3 Spindle
 With 1100-510 Miter Band Saw
 For

IMPORTANT Safety Note!
 Peddinghaus Corp. is not responsible for any damage or injury caused by the use of this equipment. The user must read and understand the instructions and safety warnings provided with the equipment. Peddinghaus Corp. is not responsible for any damage or injury caused by the use of this equipment. The user must read and understand the instructions and safety warnings provided with the equipment.

Drawn By: **J. Alford**
 SCALE: 1:20
 DATE: