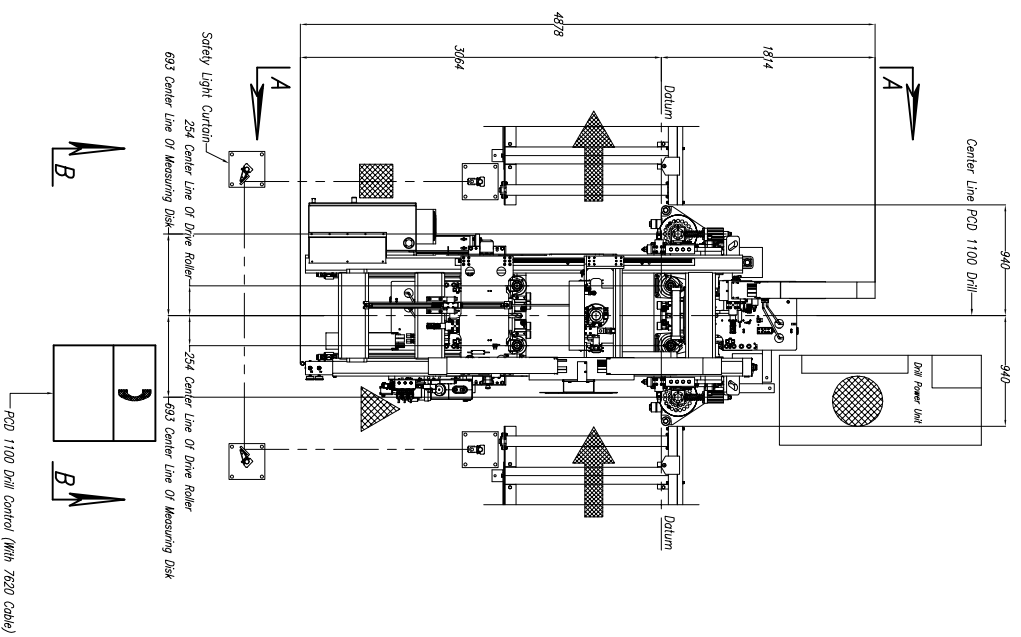
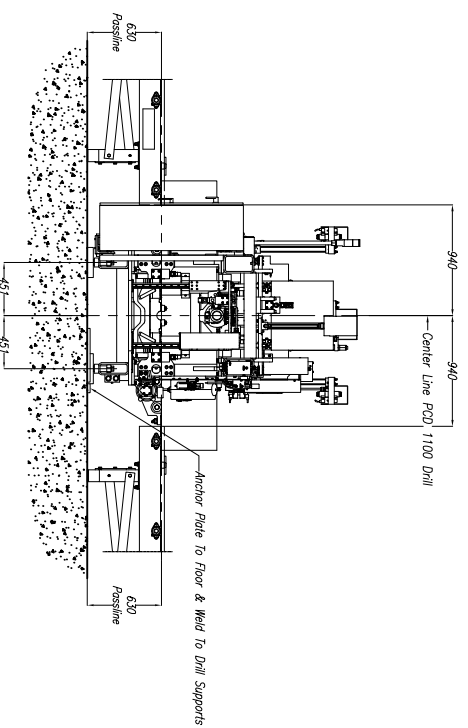
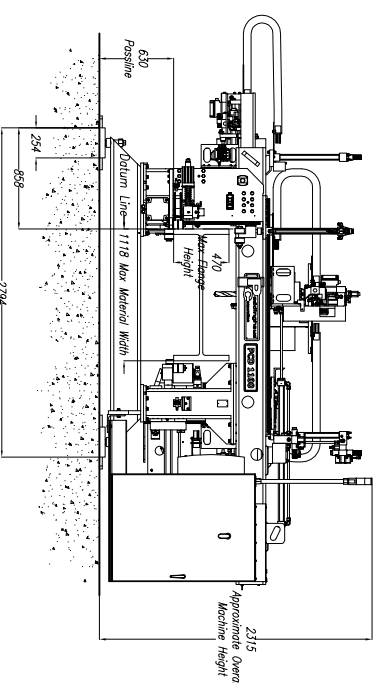


**!!!NOTE: DO NOT DRILL HOLES FOR ANCHOR PLATES UNTIL MACHINE IS IN PLACE AND LEVEL AT FINAL INSTALLATION!!!**

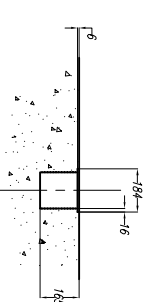
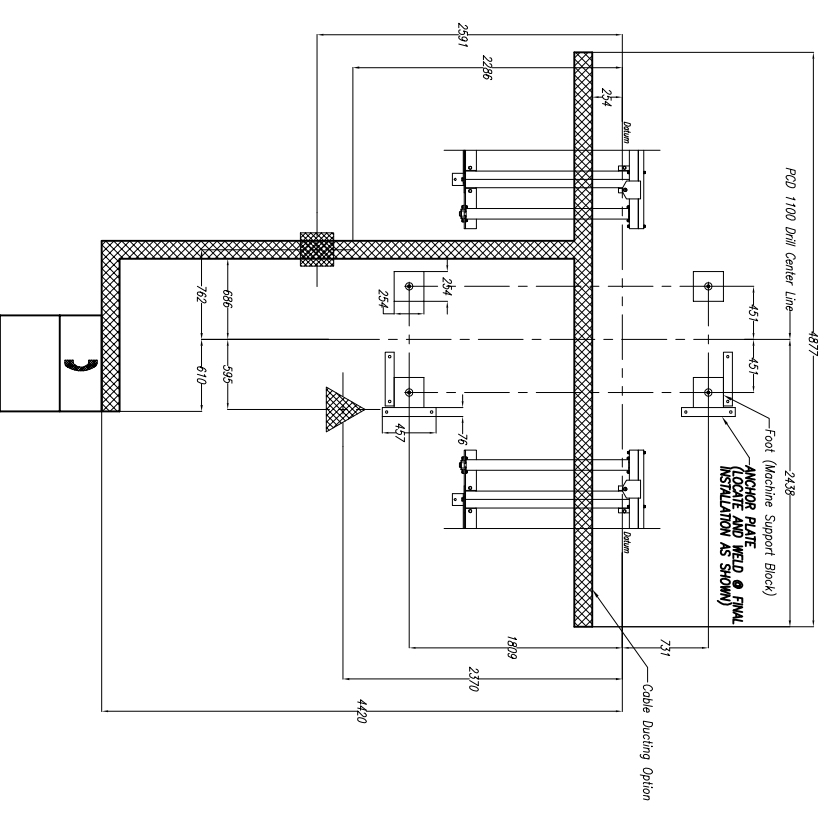


**Approximate Machine Weight**  
PCD 1100 – 4,763 kg



**DRILL COOLANT RECOMMENDATION:**  
SEE MANUAL FOR DRILL COOLANT RECOMMENDATIONS

**C 25/38 x 200mm THICK CONCRETE RECOMMENDED UNDER ALL EQUIPMENT**



**CABLE DUCT DETAIL**  
CUSTOMER TO SUPPLY COVER, 60mm THK, X 184mm WIDE  
INSTALLED AFTER FINAL FIELD WIRING & PIPING

**PCD 1100/3 Drill NOTES:**

- 1.) Passline of Equipment Based on 630mm from Floorline
- 2.) Concrete Under System to be a Minimum of 200mm Thick
- 3.) Primary 380 V., 3 Ph., 50 Hz [Req'd @ each ]
- 4.) Total kW for Equipment = 81.6 kW (138 Amps)
- 5.) Air Requirement With Out Signoscript: 5.52 bar, 1.42 SCMM Min. Free Air [Req'd @ each ]  
Air Requirement With Signoscript: 5.52 bar, 0.85 SCMM Min. Free Air [Req'd @ each ]
- 6.) Hydraulic Oil (Mobil DTE #24 or Equal) [Req'd @ Each ] 1454 L Total
- 7.) Anchor Bolts (Control Stand) 12mm Anchor Bolts or Equal [4 Req'd]
- 8.) Anchor Bolts (Machine & Safety Stands) 20mm Anchor Bolt or Equal [24 Req'd]
- 9.) Network/Internet Connection for Data Transfer and Remote Diagnostics [Req'd @ Each ]

REVISION/C/N.#	BY	DATE	THIS PRINT IS THE PROPERTY OF PEDDINGHUS CORP. AND IS NOT TO BE USED IN ANY MANNER DETRIMENTAL TO THE INTERESTS OF SAID COMPANY.
E			
D			
C			
B			
A			
LET.			

**Peddinghus Corp.**  
BRADLEY, ILL. U.S.A.  
PCD 1100 Drill 3 Spindle  
For  
*G. Markin*  
DRAWN BY: SCALE: 1 : 30 DATE:  
DRWG. NO.

**IMPORTANT Safety Note!**  
Because of the difficulty to effectively guard the full length of the system, it is the customer's responsibility to prevent access by unauthorized personnel and to provide safe crossing.