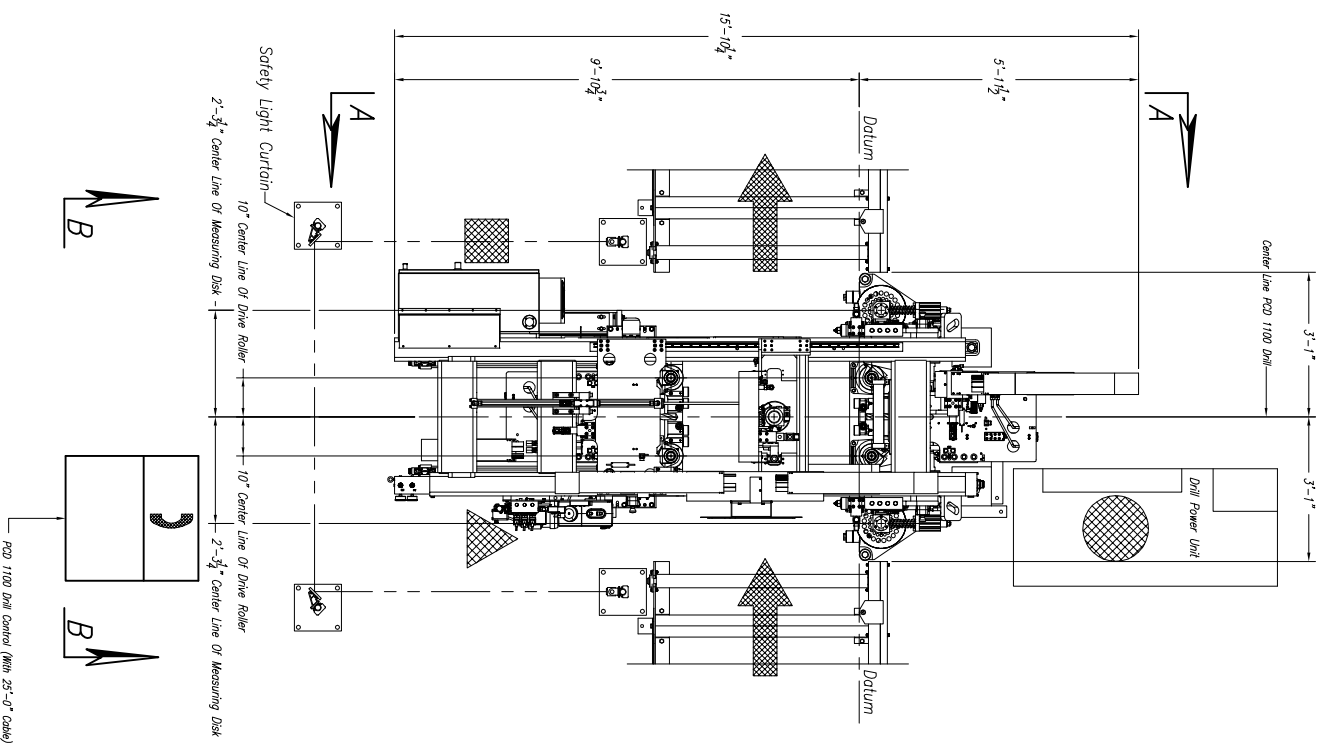
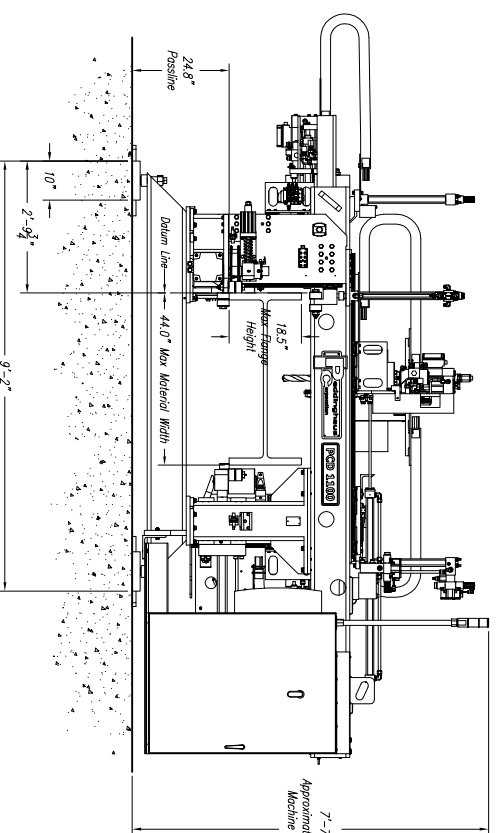


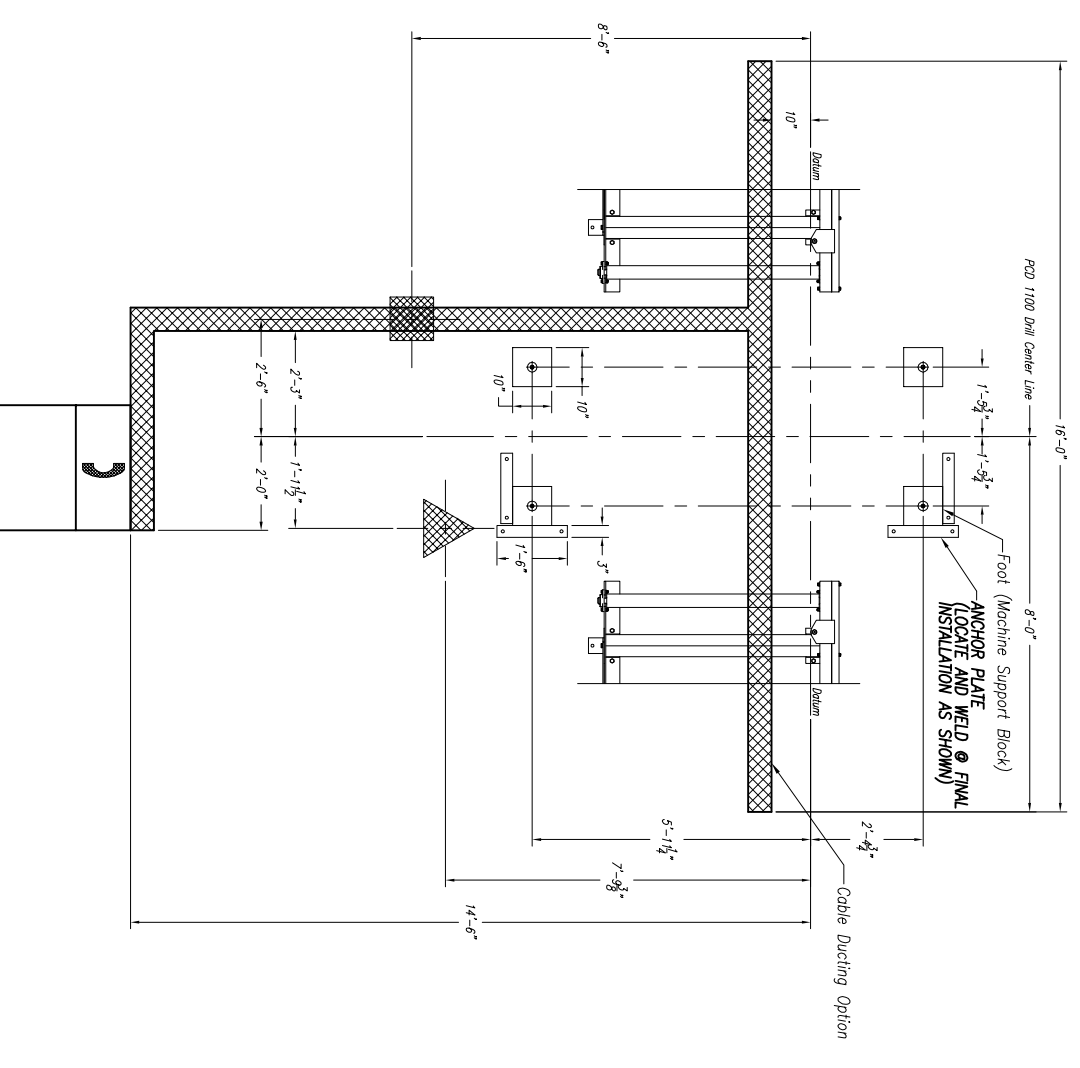
!!!NOTE: DO NOT DRILL HOLES FOR ANCHOR PLATES UNTIL MACHINE IS IN PLACE AND LEVEL AT FINAL INSTALLATION!!!



Approximate Machine Weight  
PCD 1100 - 10,500lbs



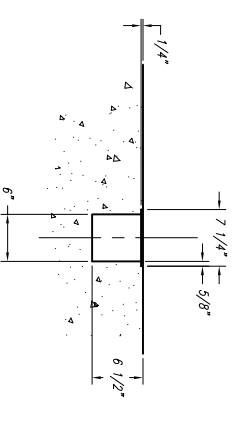
Section A-A  
(LEFT SIDE VIEW)



PCD 1100/3 Drill NOTES:

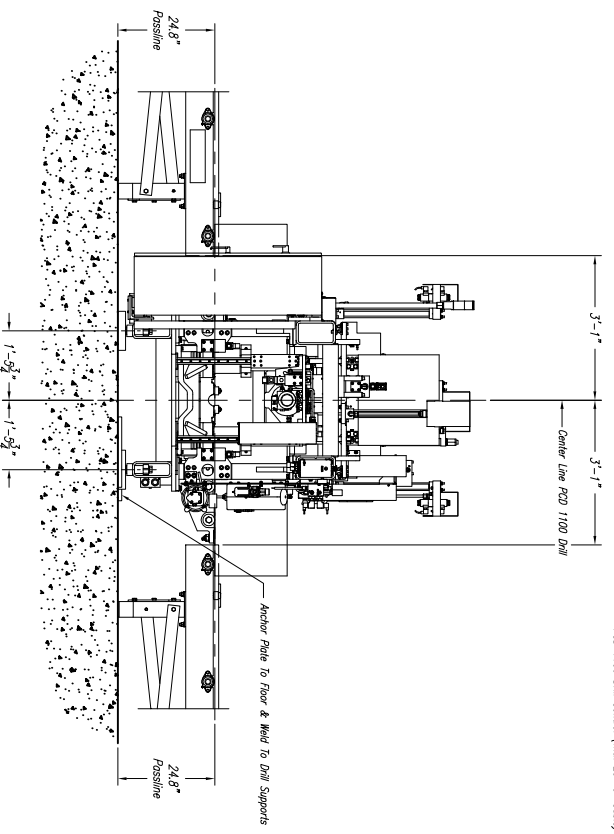
- 1.) Passline of Equipment Based on 24.8" from Floorline
- 2.) Concrete Under System to be a Minimum of 6" Thick
- 3.) Primary 460 V., 3 Ph., 60 Hz. [Req'd @ each ]
- 4.) Total K.V.A. for Equipment = 90.7 K.V.A. (114 Amps)
- 5.) Air Requirement With Out Signoscript: 80 PSIG, 30 SCFM Min. Free Air [Req'd @ each ]  
Air Requirement With Signoscript: 80 PSIG, 50 SCFM Min. Free Air [Req'd @ each ]
- 6.) Hydraulic Oil (Mobi DTE #24 or Equal) [Req'd @ Each ] 120 Gal. Total
- 7.) Anchor Bolts (Control Stand) 1/2" ITW Red Head WS-1270 or Equal [4 Req'd]
- 8.) Anchor Bolts (Machine & Safety Stands) 3/4" ITW Red Head WS-3470 or Equal [24 Req'd]
- 9.) Network/Internet Connection for Data Transfer and Remote Diagnostics [Req'd @ Each ]

CABLE DUCT DETAIL  
CUSTOMER TO SUPPLY COVER: 1/4" THK. X 7'-1/4" WIDE  
INSTALLED AFTER FINAL FIELD WIRING & PIPING



**DRILL COOLANT RECOMMENDATION:**

USE TRI CHEM "KLEAR KUT" HEAVY DUTY COOLANT (THIS WILL WORK WITH ANY VARIANCE OF WATER HARDNESS.) THIS PRODUCT MUST BE ADDED TO THE WATER, NOT THE OTHER WAY AROUND (DO NOT ADD WATER TO THIS PRODUCT) USE APPROX 1:30 PRODUCT TO WATER RATIO FOR STANDARD DUTY APPLICATIONS TO APPROX. 1:10 PRODUCT TO WATER RATIO FOR HEAVY DUTY APPLICATIONS.



Section B-B

E						<b>Peddinghaus Corp.</b> BRADLEY, ILL. U.S.A.  <b>PCD 1100 Drill 3 Spindle</b> For	IMPORTANT Safety Note! Because of the difficulty to effectively guard the full length of the system it is the customers responsibility to prevent access by unauthorized personnel and to provide safe crossing.
D							
C							
B							
A							
LET.	REVISION/C.N.#	BY	DATE	THIS PRINT IS THE PROPERTY OF PEDDINGHAUS CORP. AND IS NOT TO BE USED IN ANY MANNER DETRIMENTAL TO THE INTERESTS OF SAID COMPANY		DRAWN BY: <i>J. Markin</i> SCALE: 1/2" = 1' DATE:	DRWG. NO.