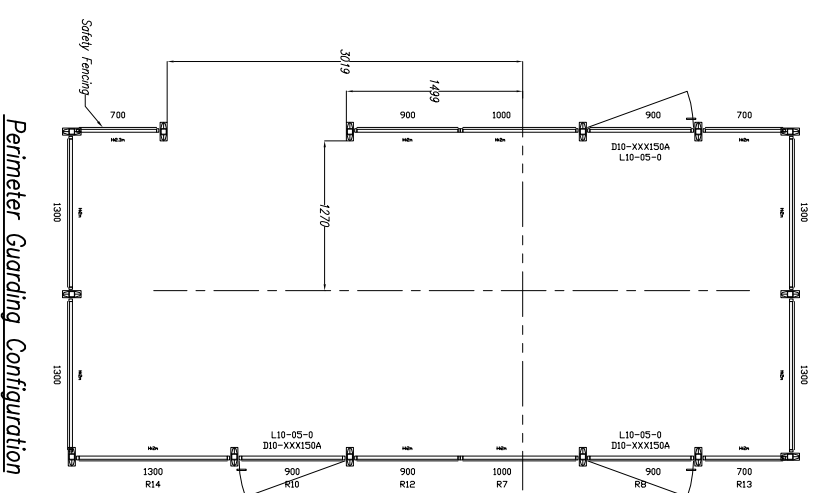
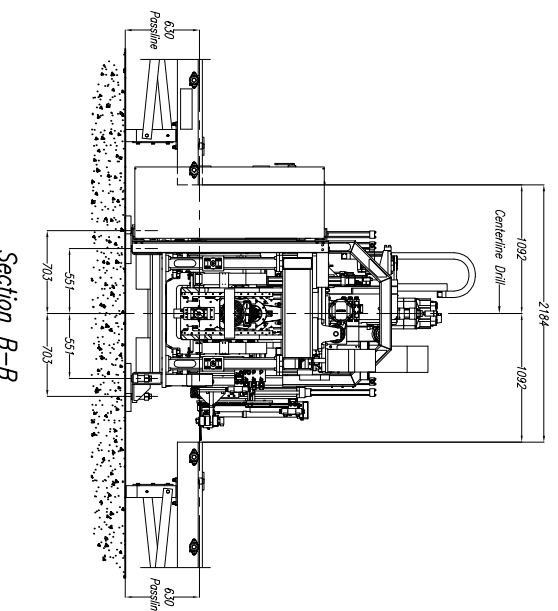
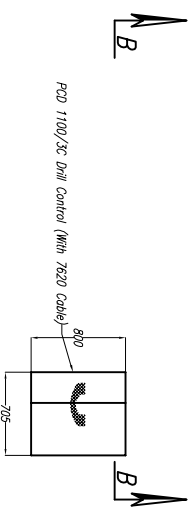
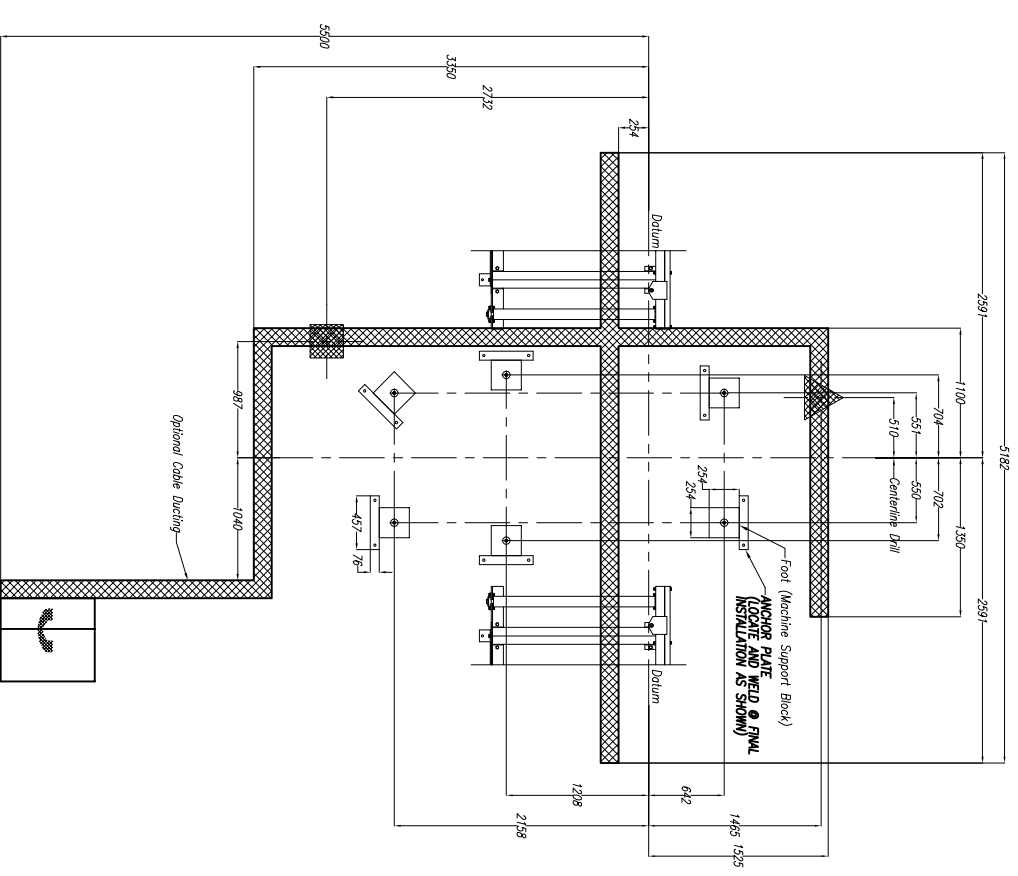


**Approximate Machine Weight**  
PCD 1100/3C – 9,117 kg

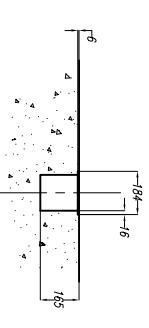
**DRILL COOLANT RECOMMENDATION:**  
See Manual For Drill Coolant Recommendations



**!!!NOTE: DO NOT DRILL HOLES FOR ANCHOR PLATES UNTIL MACHINE IS IN PLACE AND LEVEL AT FINAL INSTALLATION!!!**



**Note: Customer To Determine Cable Ducting Arrangement For Main Power & Air Supplies**  
**C 25/38 x 200mm THICK CONCRETE RECOMMENDED UNDER ALL EQUIPMENT**



**PCD 1100/3C Drill Notes:**

- 1.) Passline of Equipment Based on 630mm from Floorline
- 2.) Concrete Under System to be a Minimum of 200mm Thick
- 3.) Primary 400 V., 3 Ph., 50 Hz. [Req'd @ each ]
- 4.) Total kW for Equipment = 52 kW (96 Amps)
- 5.) Air Requirement 6,205 bar, 1.70 SCMM Min. Free Air [Req'd @ each ]
- 6.) Hydraulic Oil (Mobil DTE #24 or Equal) [Req'd @ Each ]
- 7.) Anchor Bolts (Control Stand) 12mm Anchor Bolts or Equal [4 Req'd]
- 8.) Anchor Bolts (Machine) 20mm Anchor Bolts or Equal [28 Req'd]
- 9.) Network/Internet Connection for Data Transfer and Remote Diagnostics [Req'd @ Each ]

**CABLE DUCT DETAIL**  
CUSTOMER TO SUPPLY COVER, 6mm THK. X 184mm WIDE  
INSTALLED AFTER FINAL FIELD WIRING & PIPING

Peddinghaus Corp.		IMPORTANT Safety Note	
BRADLEY, ILL. U.S.A.		Because of the difficulty to effectively guard the full length of the system, it is the customer's responsibility to prevent access by unauthorized personnel and to provide safe crossing.	
D	PCD 1100/3C Drill	SCALE: 1 : 30	DATE: 10-7-2011
C	For	DRAWN BY: <i>M. Markin</i> DRWG. NO. YD3466912	
B	Pieter Loubischer Konstluskis	BY: DATE	
A	REVISON/C.N.#	THIS PRINT IS THE PROPERTY OF PEDDINGHAUS CORP. AND IS NOT TO BE USED IN ANY MANNER DETRIMENTAL TO THE INTERESTS OF SAID COMPANY	
LET.		Sheet 1 of 1	