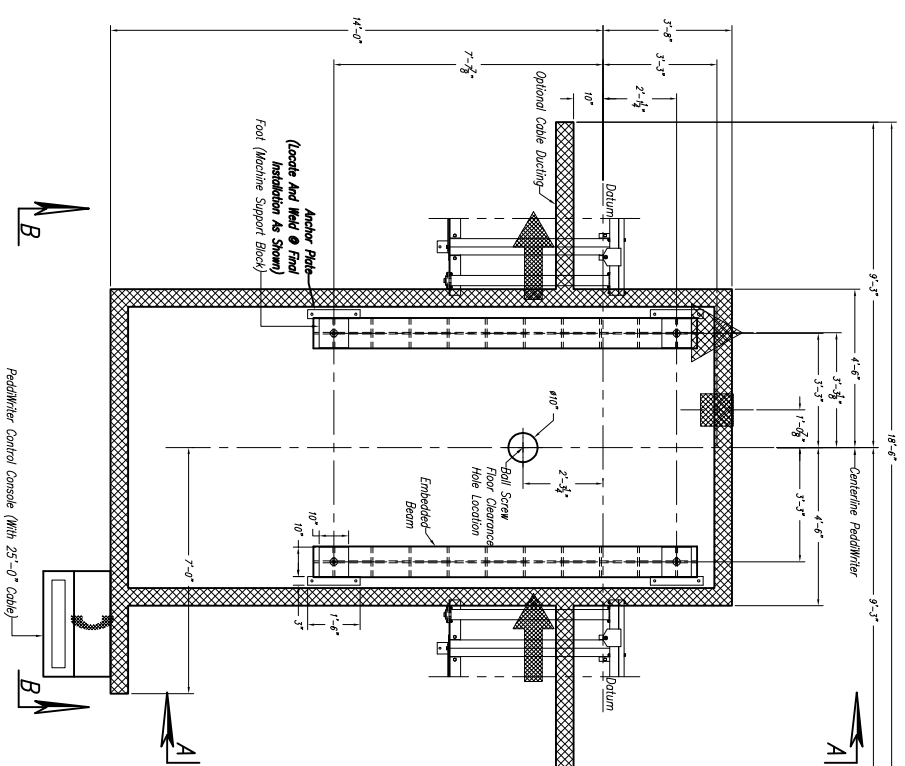
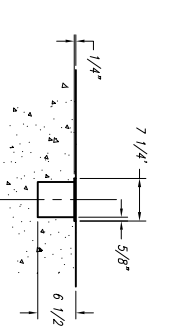
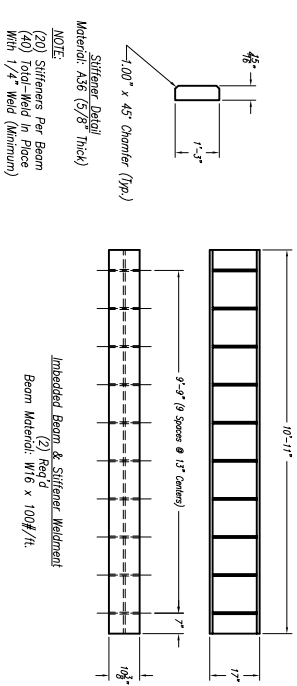
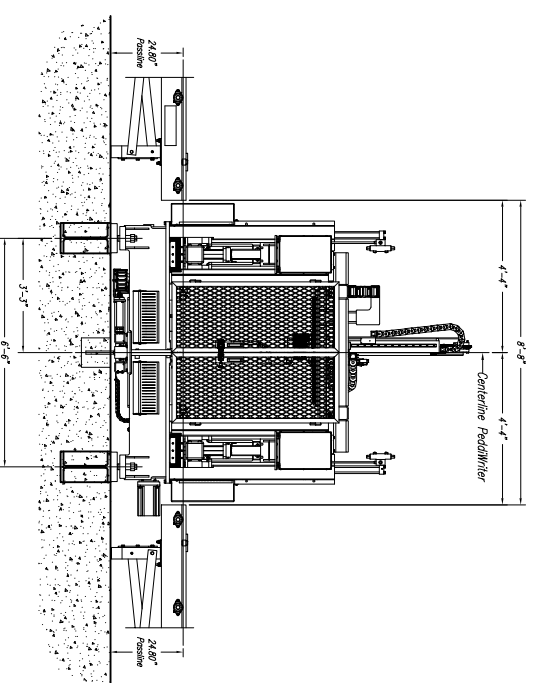


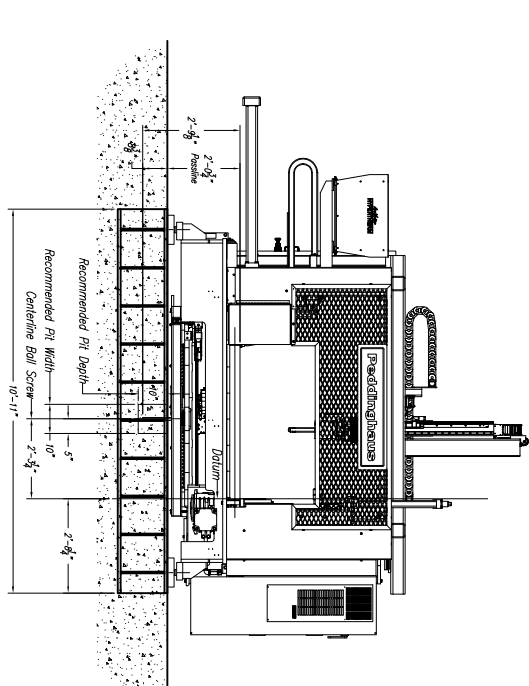
!!!NOTE: DO NOT DRILL HOLES FOR ANCHOR PLATES UNTIL MACHINE IS IN PLACE AND LEVEL AT FINAL INSTALLATION!!!



Note: Customer To Determine Cable Ducting Arrangement For Main Power & Air Supplies



CUSTOMER TO SUPPLY COVER, 1/4" THICK X 7 1/4" WIDE INSTALLED AFTER FINAL FIELD WIRING & PIPING



Section A-A (RIGHT SIDE VIEW)

Imbedded Beams For Machines Processing Beams 300#/ft. Or Less Are NOT Required, But ARE Recommended. Imbedded Beams For Machines Processing Beams Larger Than 300#/ft. ARE Required.

Customer Note:

- 1.) Ball Screw Pit IS NOT Req'd When Machine Passline Is 34.00" Or Greater.
- 2.) A Minimum Of 6.00" Of Concrete Is Req'd Beneath All Pits & Beams.

Pedinhaus Corp.		IMPORTANT SAFETY NOTICE	
BRADLEY, ILL. U.S.A.		Because of the complexity of this product, the full responsibility of the user is to provide safe access by unauthorized personnel and to provide safe crossing.	
Pedinhaus Corp.		DRAWN BY: <i>G. Marking</i> SCALE: 1/2" = 1" DATE:	
for		DRWG. NO.	
LET.	REVISION/C.N.#	BY	DATE
THIS PRINT IS THE PROPERTY OF PEDINHAUS CORP. AND IS NOT TO BE USED IN ANY MANNER DETERMINATIVE TO THE INTERESTS OF SAID COMPANY			
Sheet 2 of 2			